

# SKAGWAY PORT MASTER PLAN

Updated Design Concepts for Skagway's Waterfront

FEBRUARY MASTER PLAN PRESENTATION



# HOUSE RULES

- Masks and social distancing required in the Rec Center 
- Please keep microphones muted during the presentation 
- Please hold questions until the comment period at the end 
- Thank you for your participation! 





# INTRODUCTION

Port Master Planning Goals

Project Timeline

Elements of the Plan

Project Area | Existing Land Use

# PORT MASTER PLANNING GOALS

01

ADDRESS THE IMPACTS OF  
COVID-19 THROUGH URBAN  
PLANNING & ENGINEERING  
DESIGN



02

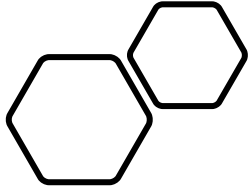
DEVELOP CONCEPTS FOR FUTURE  
WATERFRONT



03

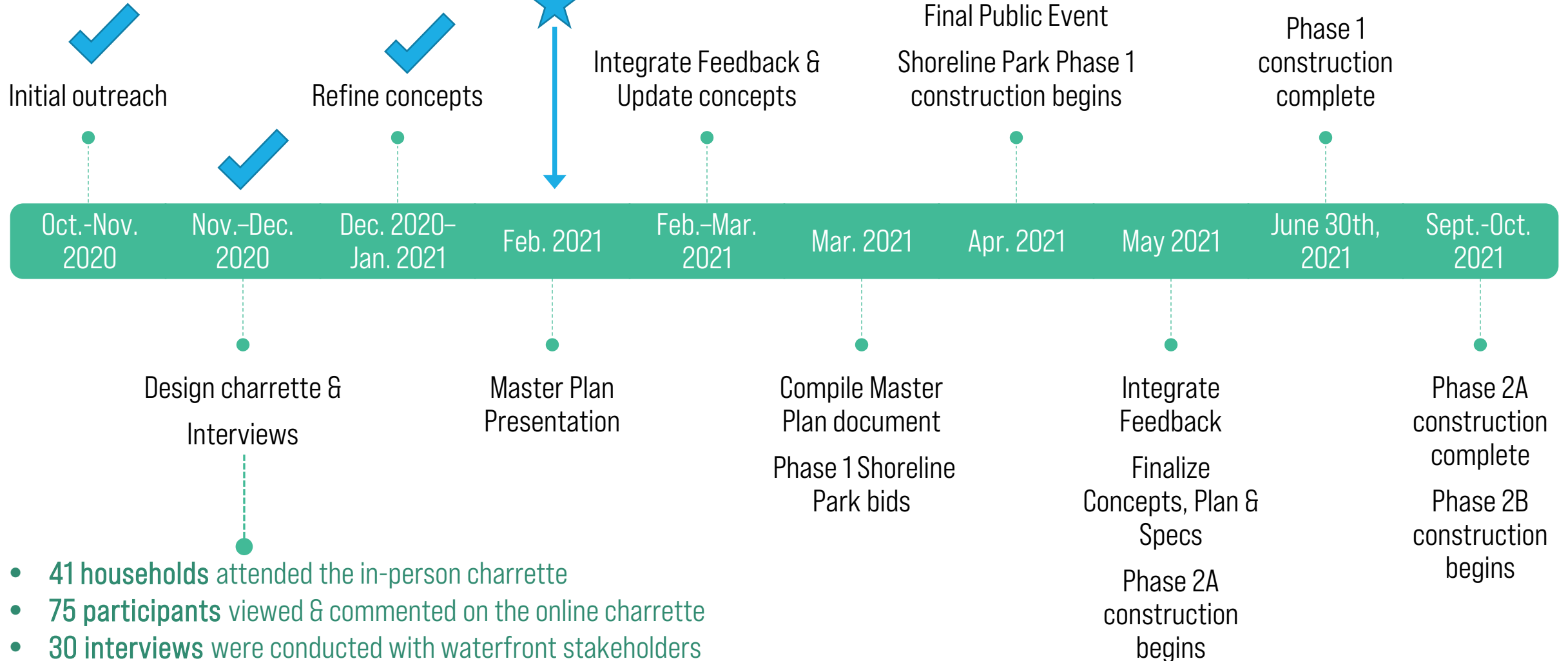
ENGAGE THE PUBLIC +  
STAKEHOLDERS IN THE  
PLANNING PROCESS



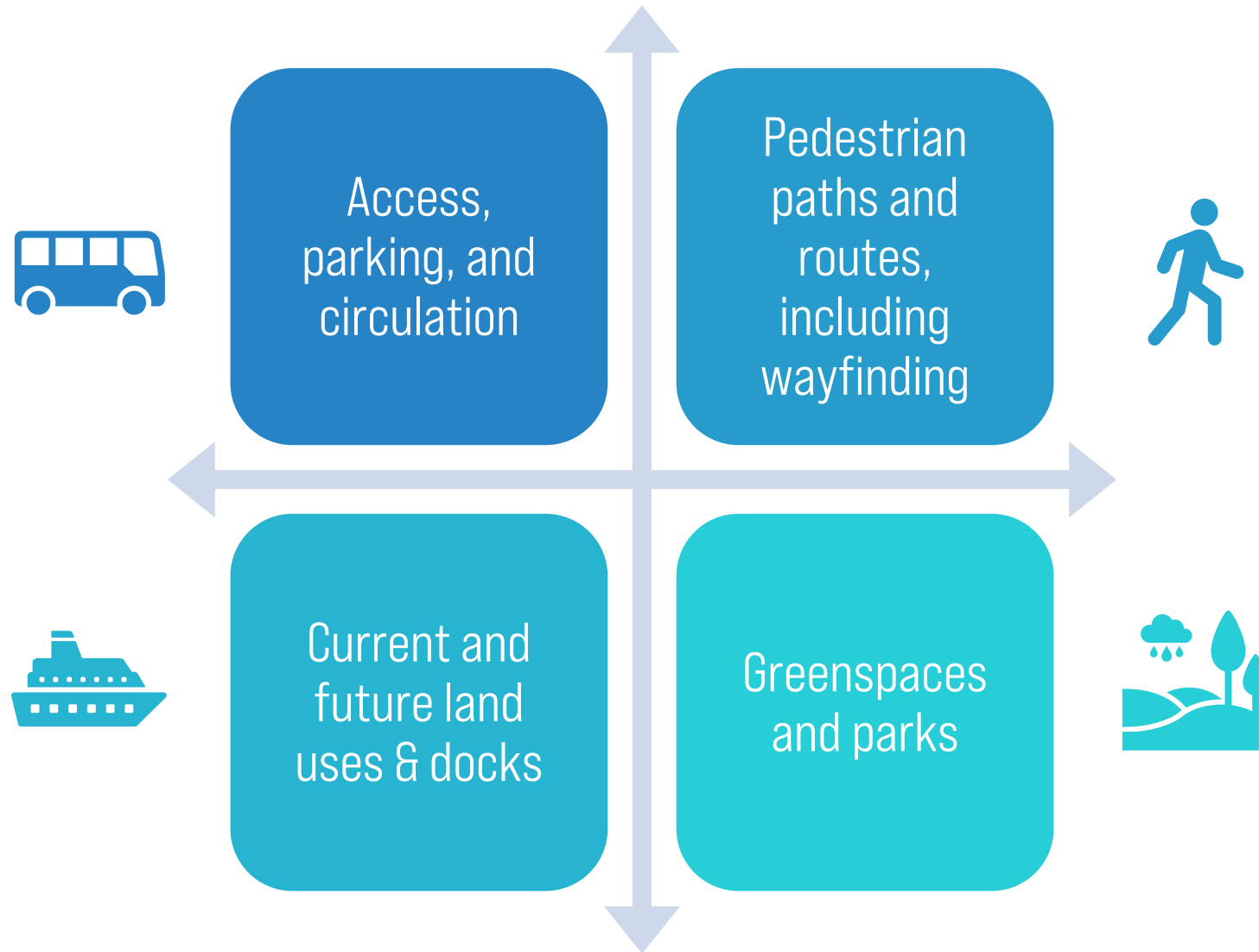


# TIMELINE

WE ARE HERE

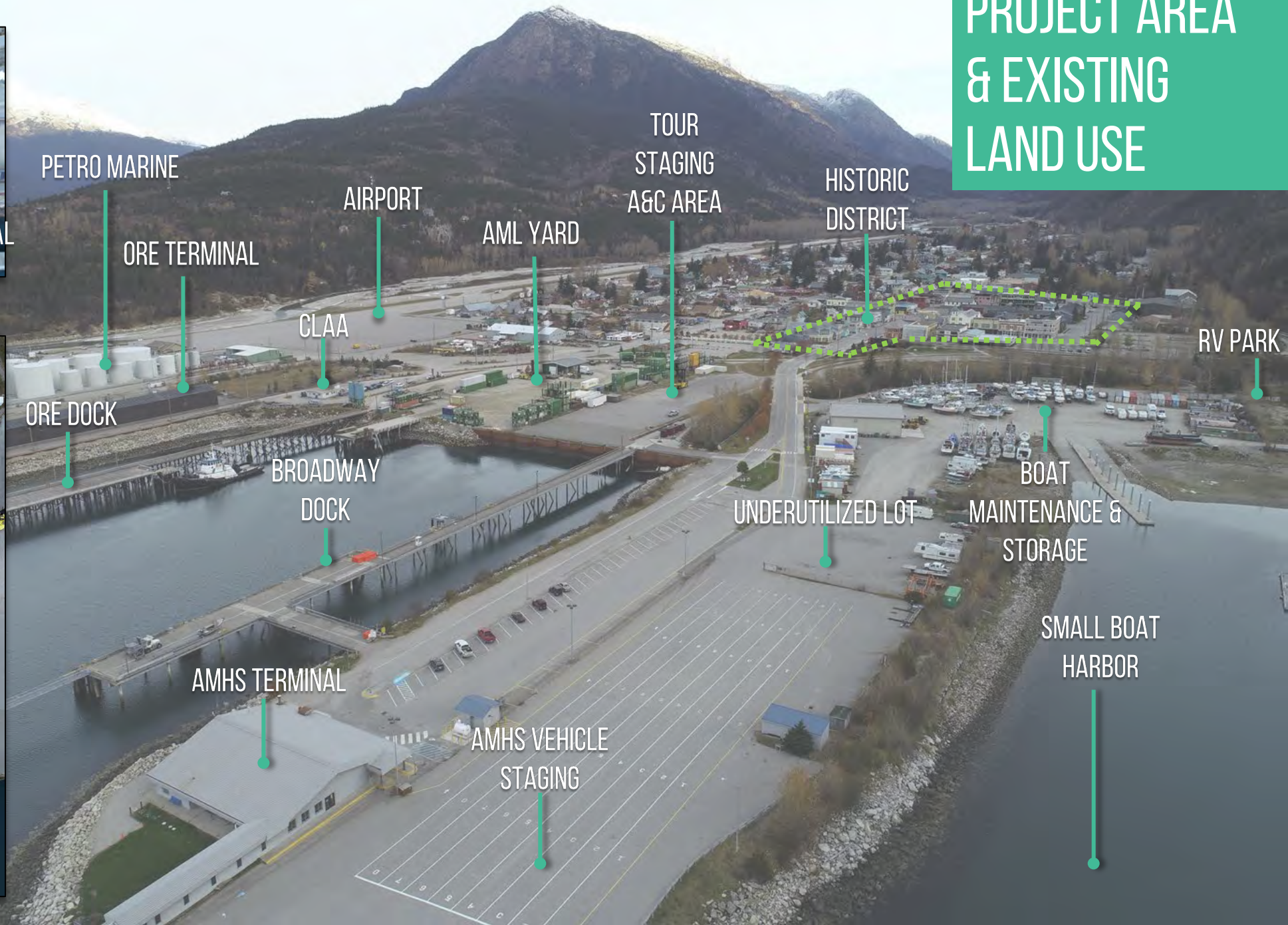


# WHAT ELEMENTS ARE BEING EVALUATED?





# PROJECT AREA & EXISTING LAND USE

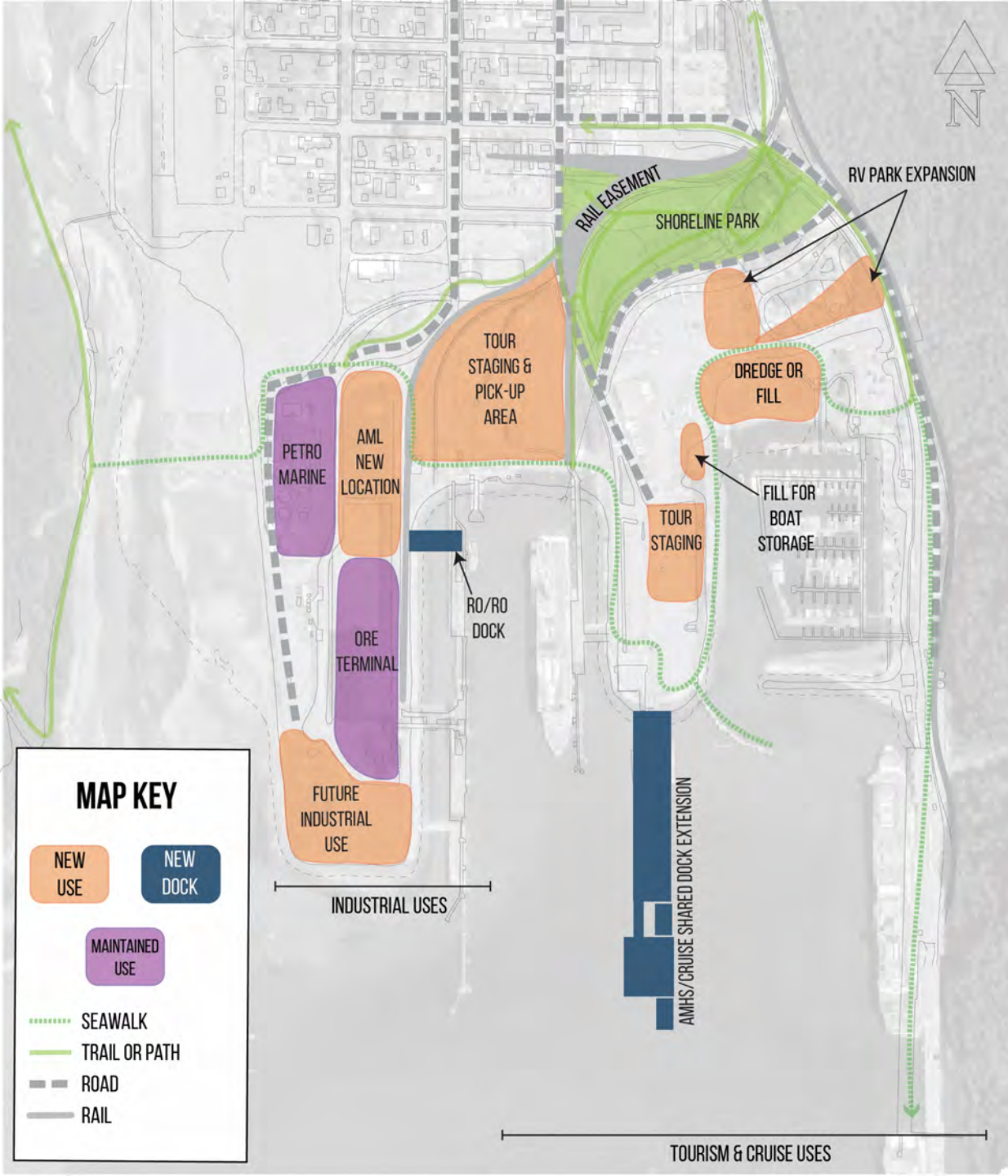




# FUTURE LAND USE

## HIGHLIGHTS:

- SEPARATION OF USES
  - Tourism & cruise uses east of Ore Dock
  - Industrial uses from Ore Dock west
- MAINTAINED USES
  - Petro Marine
  - AML at new site
- NEW USES
  - Expanded tour parking, access & circulation areas
- NEW DOCKS
  - RO/RO facility
  - Ferry Peninsula AMHS/cruise shared use dock extension





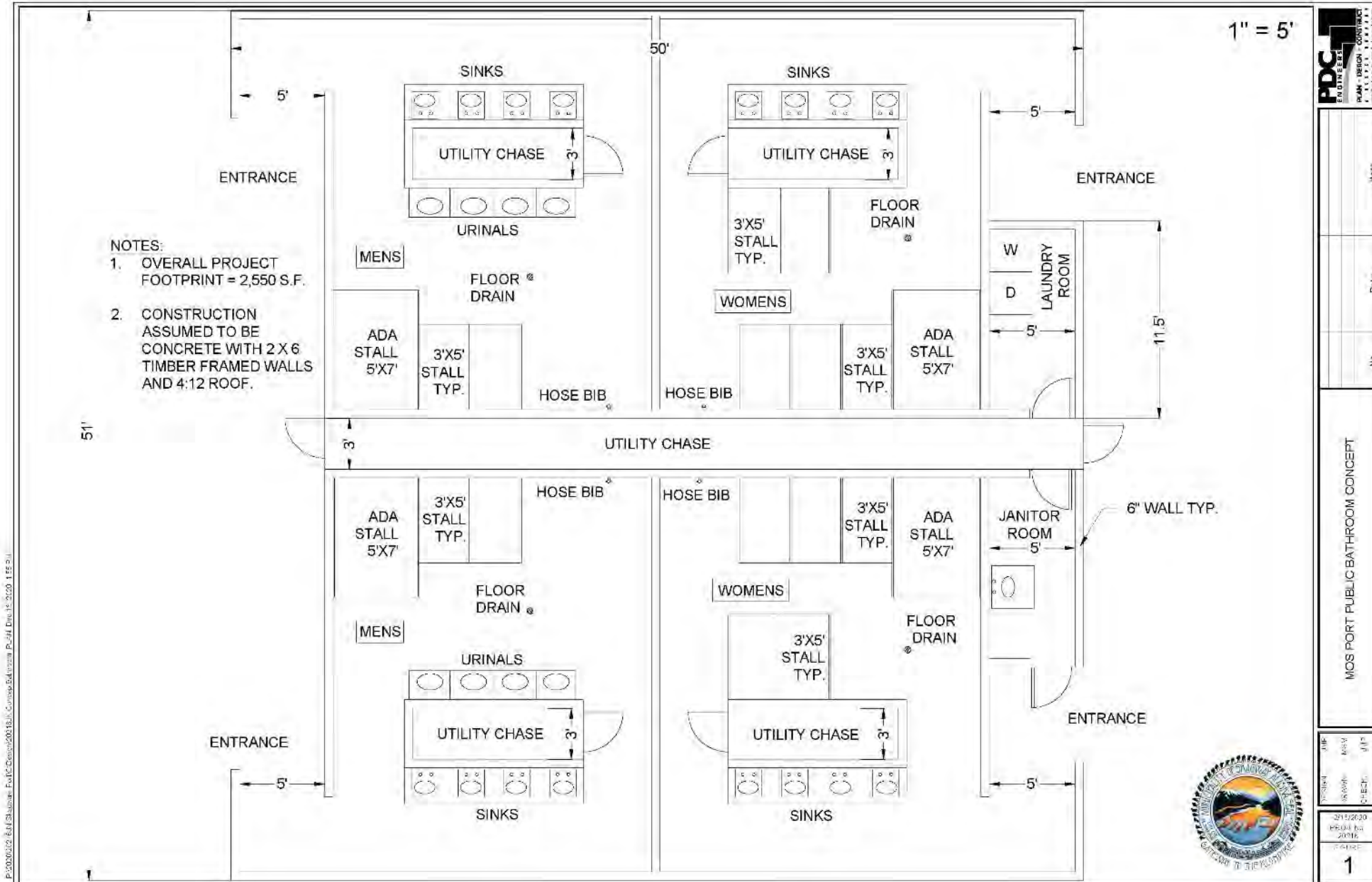
# RESTROOM & SHELTER LOCATIONS

## HIGHLIGHTS:

- Restrooms accessible from each dock
- New restroom in Shoreline Park (westside)
- New passenger waiting shelters at each dock



# RESTROOM FACILITY CONCEPT



## HIGHLIGHTS:

- Flexible Floor Plan
- Allows for social distancing movements
- Layout allows for easy maintenance



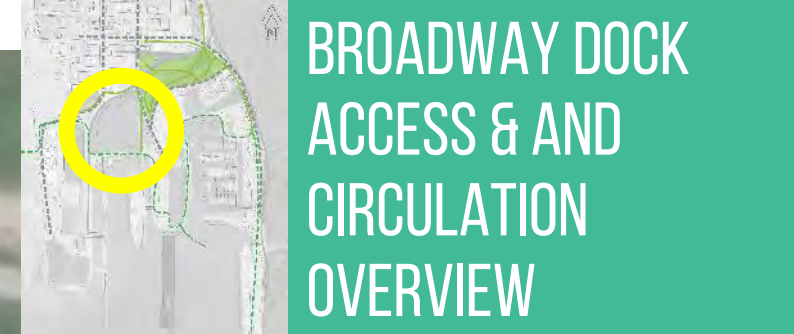
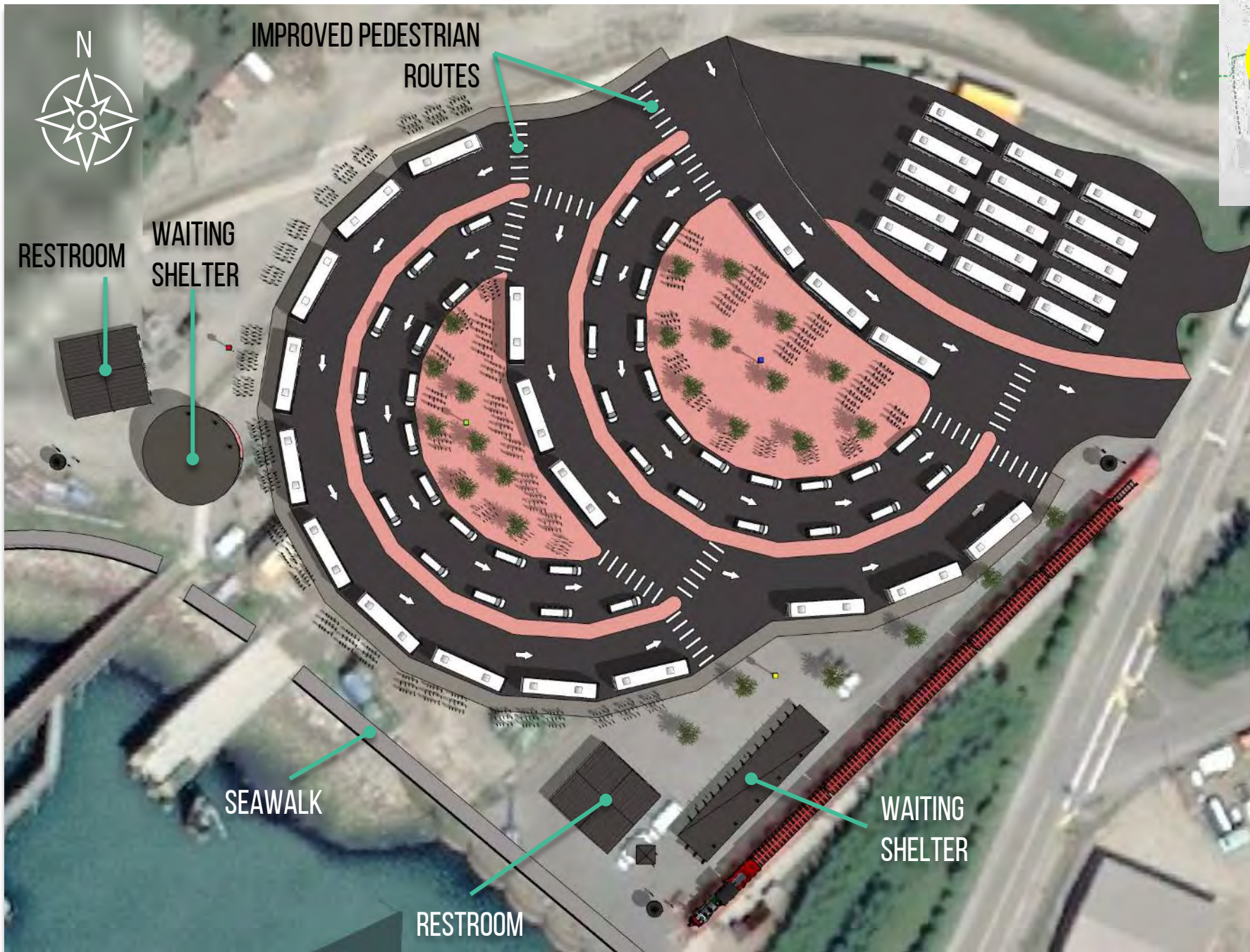


## BROADWAY DOCK UPLAND EXISTING CONDITIONS

### FEEDBACK:

- TOUR OPERATIONS
  - Chaotic, cramped, & confusing
  - Passengers exposed to wind & weather
  - Pedestrian & vehicle conflicts
  - Need for improved SMART stop
  - Need to consider bus/train transfers





## BROADWAY DOCK ACCESS & AND CIRCULATION OVERVIEW

### HIGHLIGHTS:

- No backing out vehicle movements
- Enter from State, exit onto Broadway
- Vehicle & pedestrian capacity for 2 large ships
- Designated motorcoach & small tour vehicle staging areas
- Improved turning movements
- Additional tour staging area to north
- Improved pedestrian routes
- Pax waiting shelters
- Restrooms
- Visitor info station





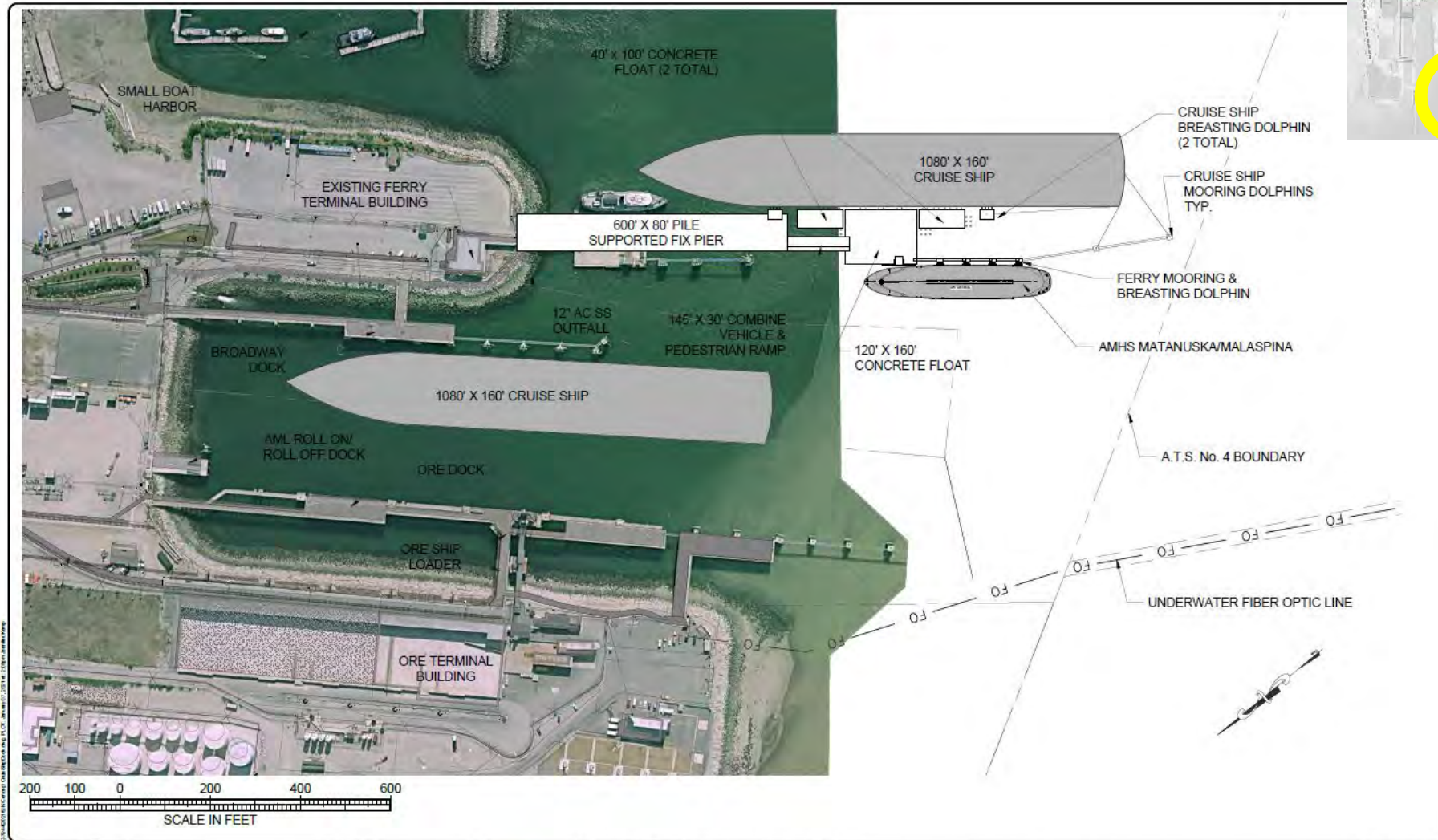
## BROADWAY DOCK ACCESS & AND CIRCULATION DETAIL



## CENTRAL PASSENGER LOADING & PLAZA AREA



# FERRY PENINSULA SHARED USE DOCK EXTENSION



## HIGHLIGHTS:

- AMHS/Cruise shared use

DESIGN: JMP	DATE: _____	REVISION: _____	BY: _____	APPROV: _____
DRAWN: JMK				
CHECK: JMP				
APPROVED: JMP				
PLS: _____				

**PDC**  
ENGINEERS

PLAN • DESIGN • CONSTRUCT

A DESIGN PARTNER

3000 Marshfield Mall, Ste. 4, Juneau, AK 99801

907.586.6060 | AEC608

<p>CONCEPT FOR AMHS/CRUISE SHIP DOCK EXTENSION</p> <p>MUNICIPALITY OF SKAGWAY, ALASKA</p>		<p>DATE: JAN 07, 2021</p> <p>POC: NO. 2021JAN</p> <hr/> <p>SHEET</p> <p>2 of 2</p>
---	--	--

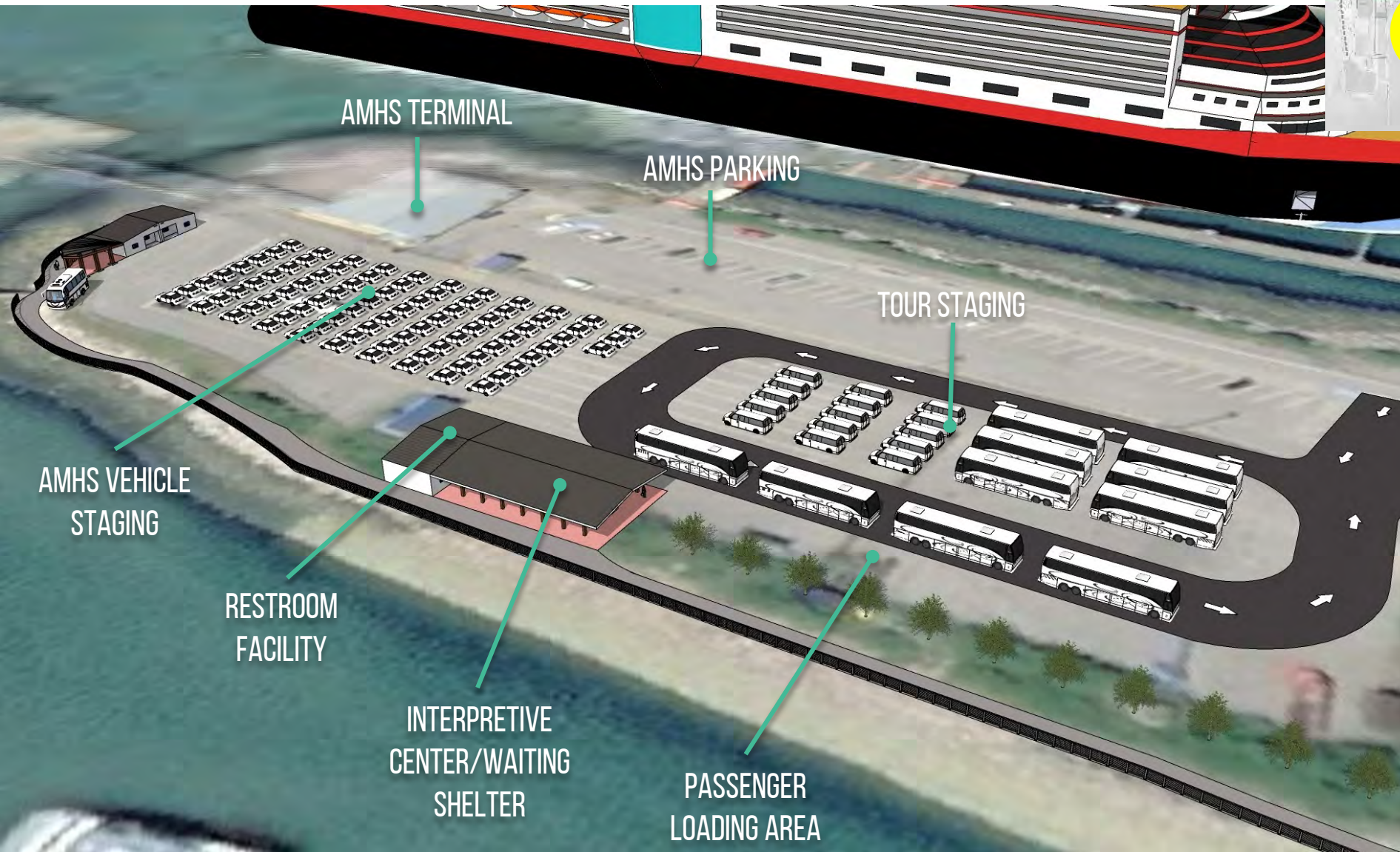




# FERRY PENINSULA UPLAND EXISTING CONDITIONS



# FERRY PENINSULA REVISED CONCEPT OVERVIEW



## HIGHLIGHTS:

- AMHS/Cruise shared use
- Minimal AMHS & tour loading conflicts
- Passenger shelters & restroom facilities
- Seawalk for pedestrian traffic



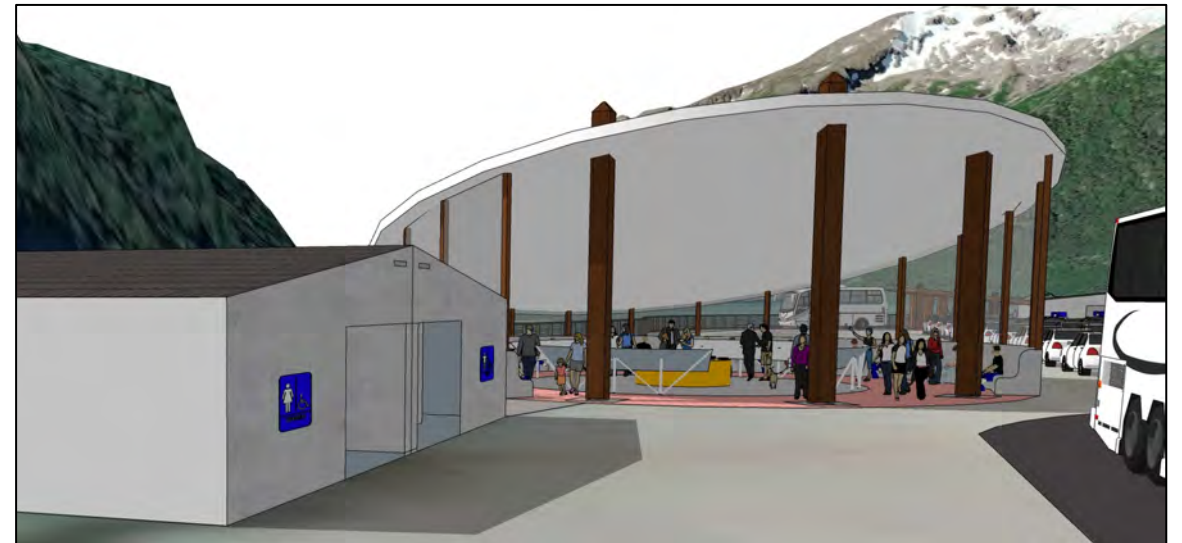
RECTANGULAR SHELTER



CIRCULAR SHELTER



FERRY PENINSULA  
REVISED CONCEPT  
DETAIL - OPTIONS





# SEAWALK DESIGN OVERVIEW

## HIGHLIGHTS:

- Extend Seawalk along waterfront
- Connect to existing Seawalk near Railroad Dock

## SEAWALK DETAIL







PEDESTRIAN KIOSK



PEDESTRIAN GUIDE

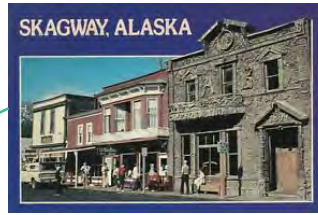


DOCK GATEWAY ELEMENT





## PEDESTRIAN KIOSK



Sign board shape inspired by historic district roofline & AB Hall.



Tlingit/ Haida names on maps & opportunities to feature Native artisans or language & cultural information on panels.



Tapered wooden beams inspired by railroad ties & Gold Rush era tools.

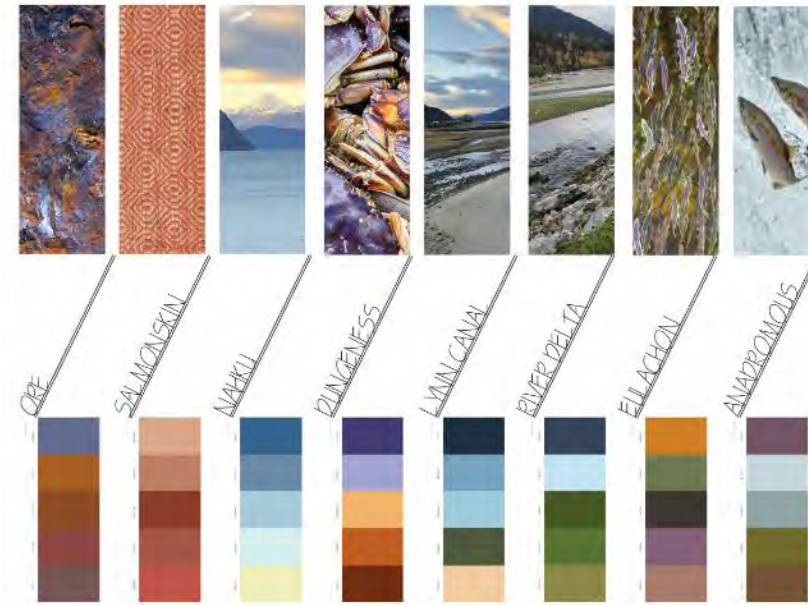


Sign board inspired by the dimensional wooden signs of early Broadway Street.



Natural materials reflect the historical resources of Skagway.

## SIGNAGE DESIGN & POTENTIAL COLOR THEMES



Potential Color Themes

## DOCK GATEWAY ELEMENT

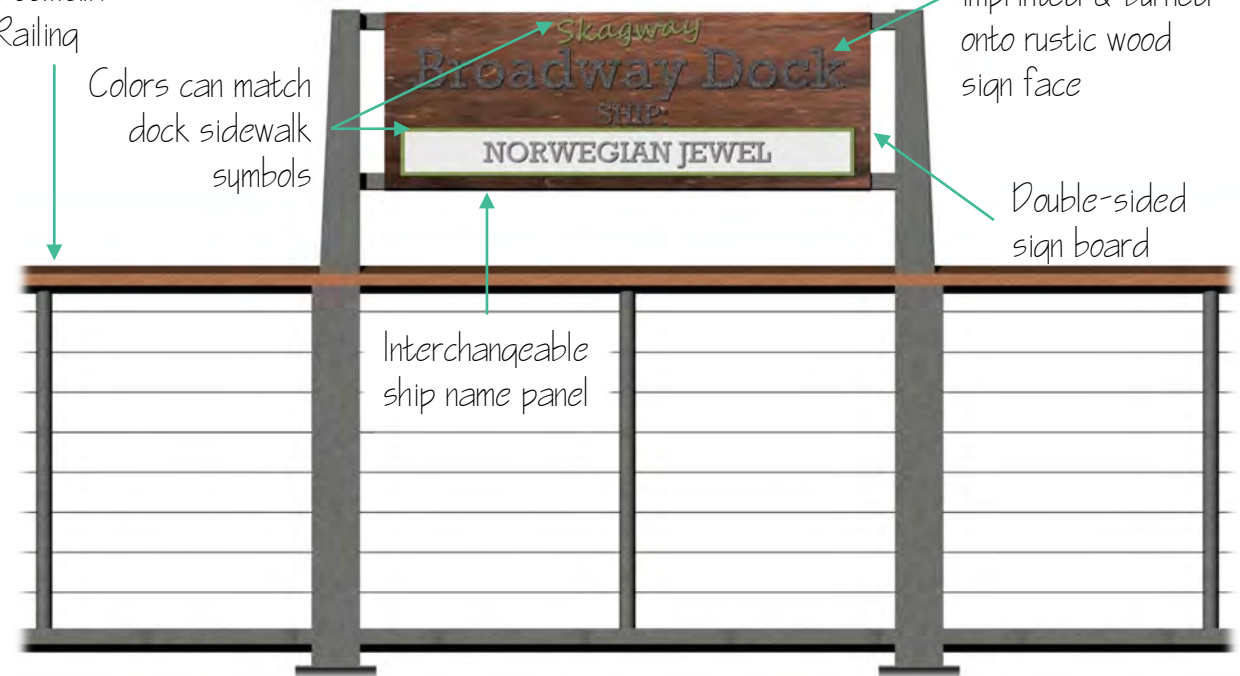
Seawalk Railing

Colors can match dock sidewalk symbols

Dock name imprinted & burned onto rustic wood sign face

Double-sided sign board

Interchangeable ship name panel





# DOCK SIDEWALK SYMBOLS

Option 1: Shapes & Colors



Option 2: Icons & Colors



Ferry Dock



Broadway Dock



Ore Dock

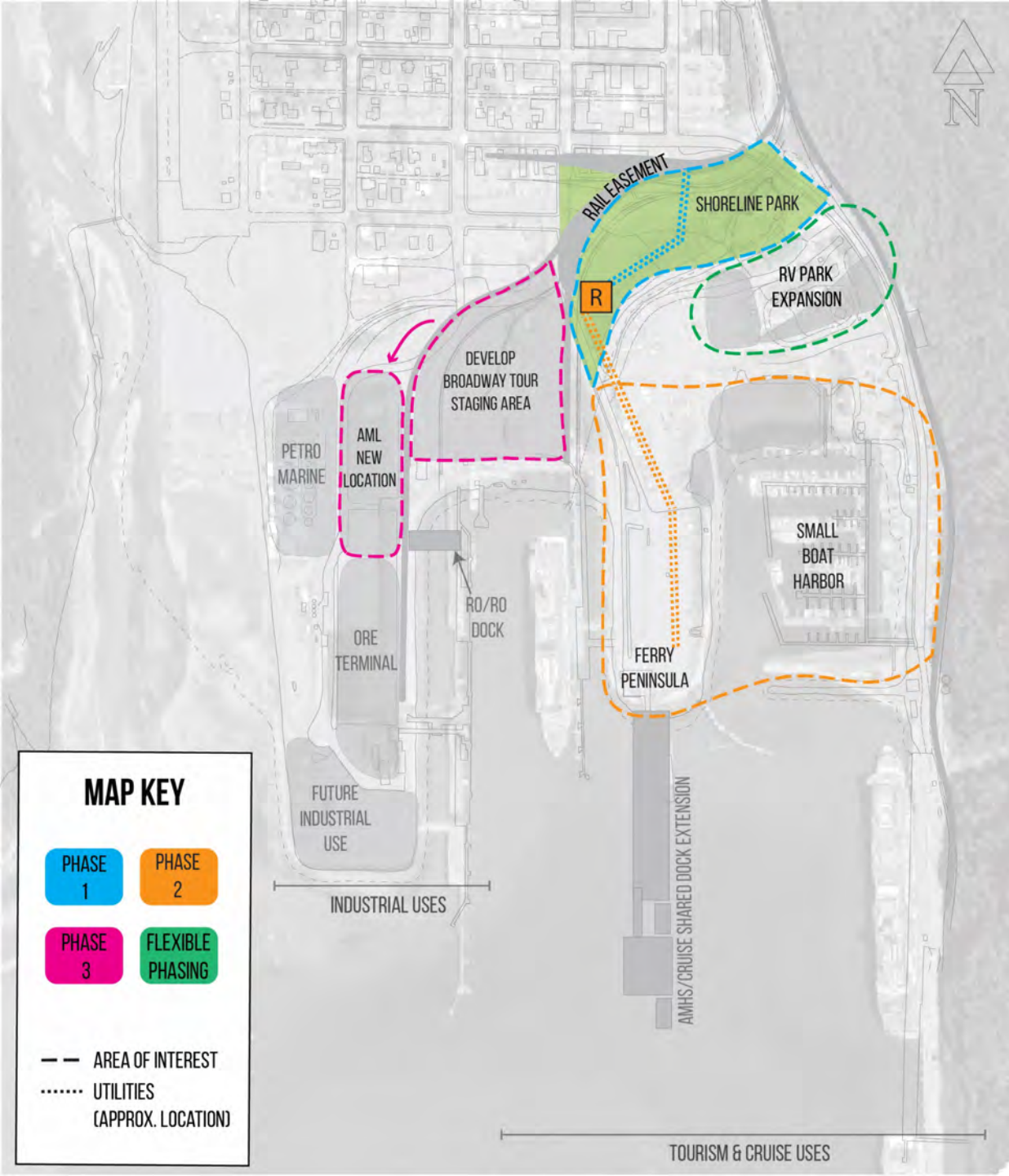


Railroad Dock

# PROJECT PHASING

## HIGHLIGHTS:

- PHASE 1 (COVID relief grant funded):
  - Shoreline Park utilities, grass, gravel path, rail safety improvements
- PHASE 2 (GO bond funded)
  - 2A: Shoreline Park restroom facility
  - 2B: Utilities extension to Ferry peninsula & Small Boat Harbor areas
- PHASE 3:
  - AML move to new location
  - Develop Broadway tour staging area
- FLEXIBLE PHASING:
  - Pullen RV Park expansion







3-FT WOODEN FENCE  
MAINTAINS SIGHTLINES

GRASS

REMOVE EXISTING PATHS  
ADJACENT TO TRACKS

IMPROVED  
PEDESTRIAN  
RAIL CROSSINGS

NEW GRAVEL  
PATH

EXISTING  
GRAVEL PATH

GRASS

PULLEN POND

EXISTING  
STRUCTURES

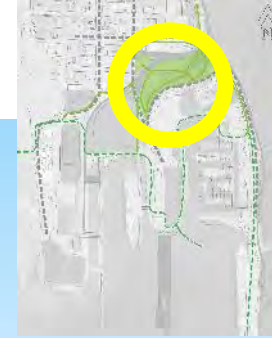
EXISTING  
PATHS

UNDERGROUND  
WATER & SEWER  
UTILITY EXTENSION

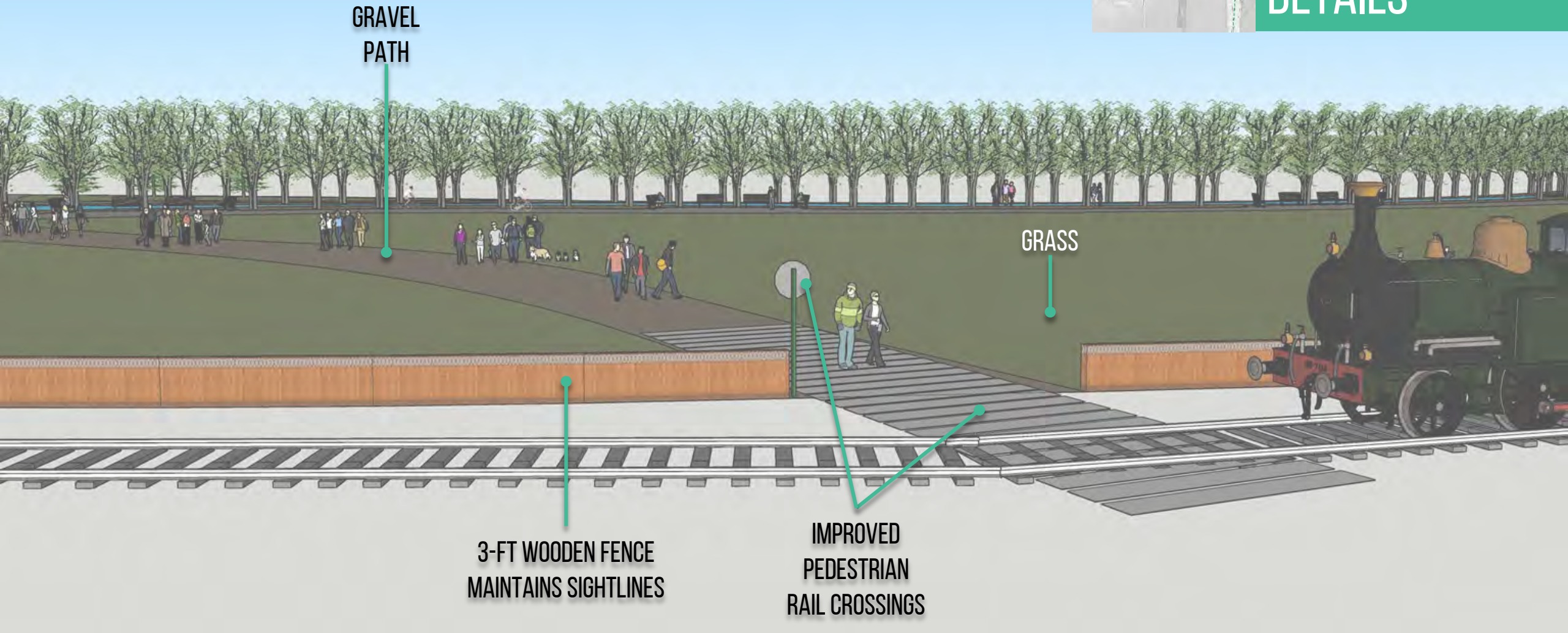
FUTURE RESTROOM  
LOCATION



# PHASE 1 – SHORELINE PARK UTILITIES & BASIC UPGRADES



# SHORELINE PARK PHASE 1 DETAILS







3-FT WOODEN FENCE  
MAINTAINS SIGHTLINES

IMPROVED  
PEDESTRIAN  
RAIL CROSSING

GRASS

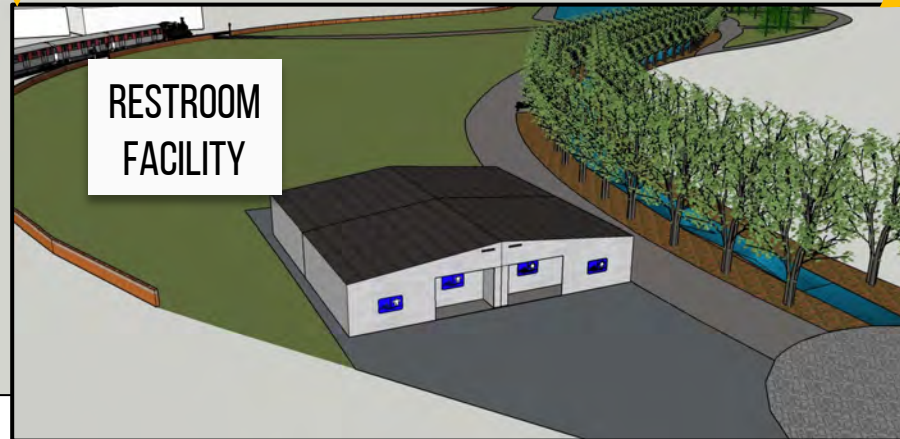
GRASS

GRAVEL  
PATH

RESTROOM  
FACILITY



PHASE 2A –  
CONSTRUCT SHORELINE  
PARK RESTROOM  
(GO-BOND)

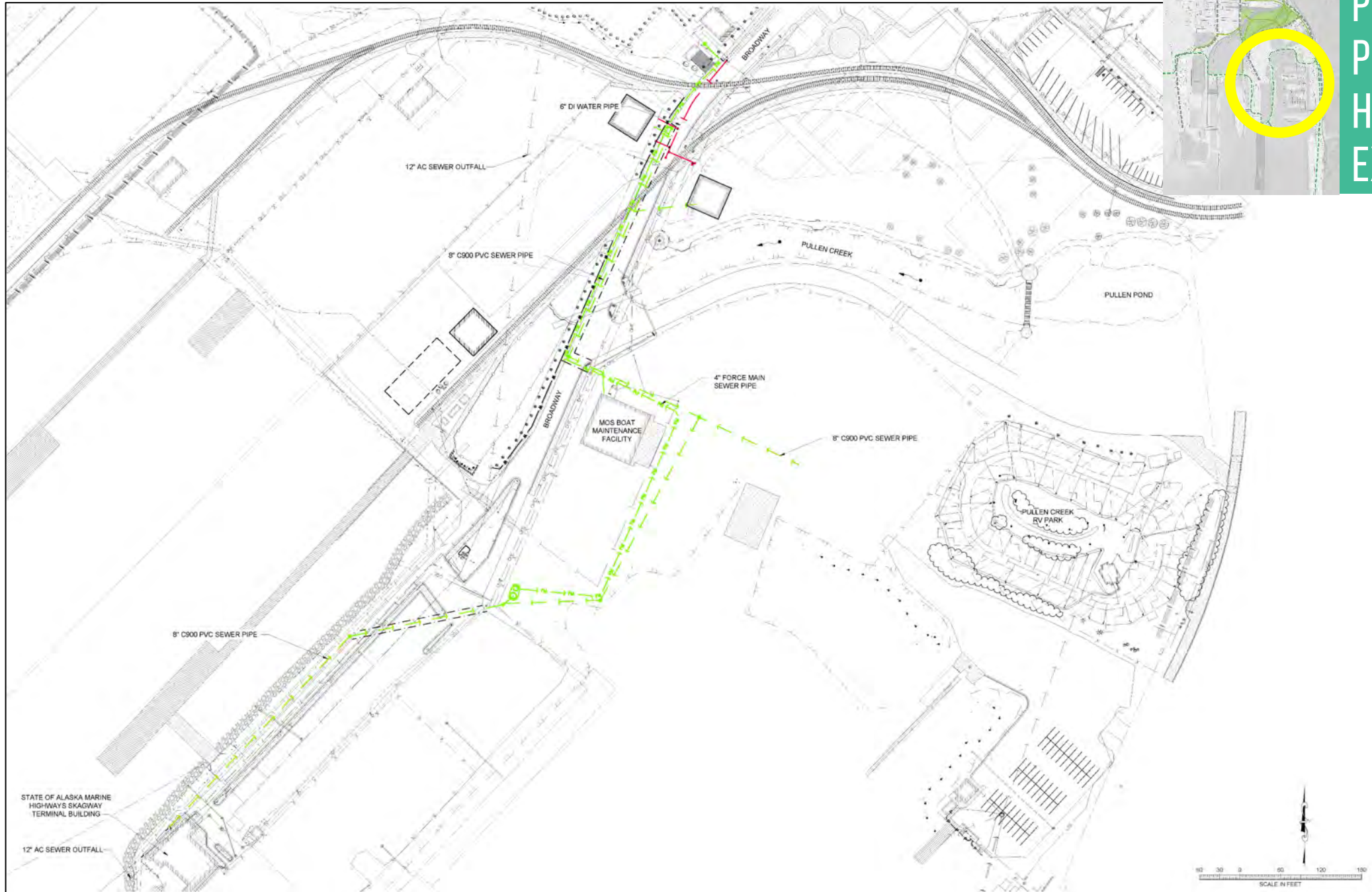


RESTROOM  
FACILITY

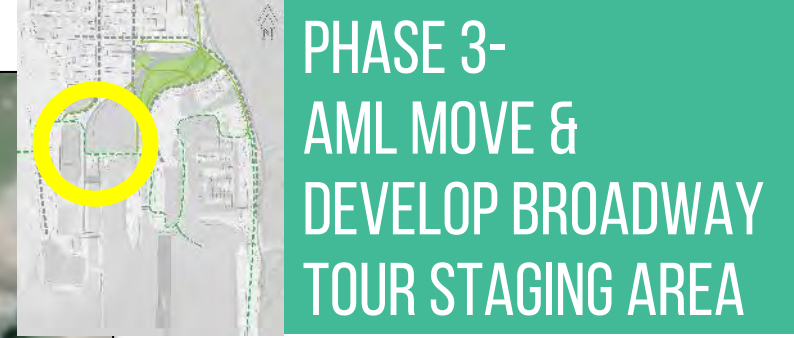
# PHASE 2B- FERRY PENINSULA & HARBOR UTILITIES EXTENSION

## HIGHLIGHTS:

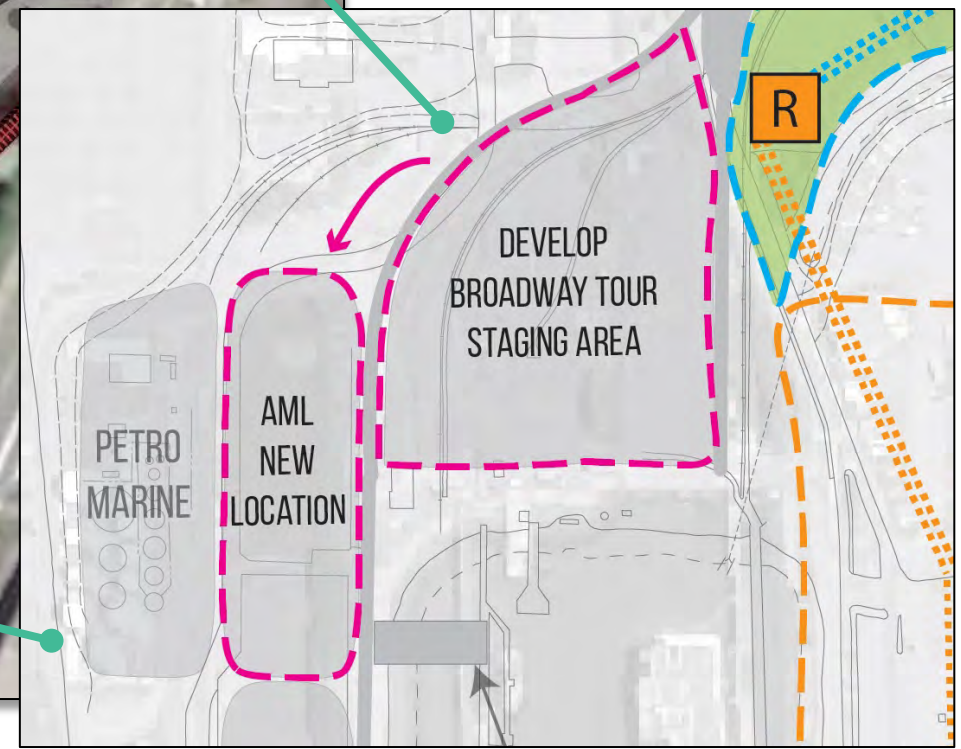
- Sewer utility extension shown in **green**.
- Water utility extension shown in **red**.



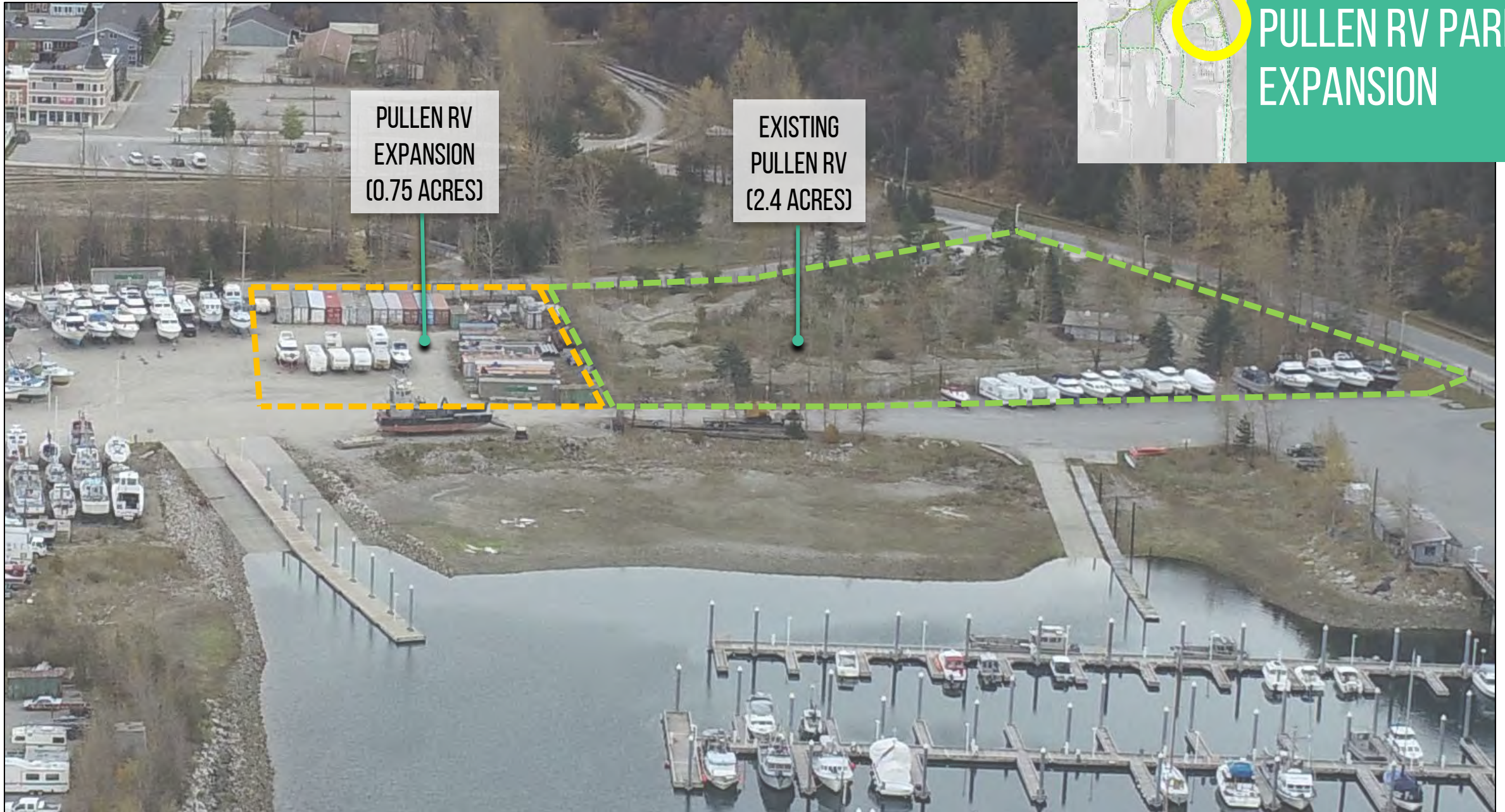




PHASE 3-  
AML MOVE &  
DEVELOP BROADWAY  
TOUR STAGING AREA

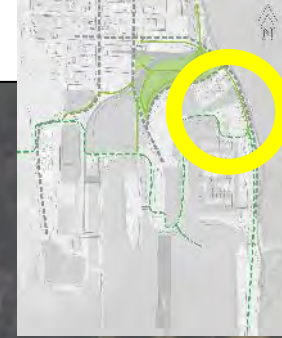






PULLEN RV  
EXPANSION  
(0.75 ACRES)

EXISTING  
PULLEN RV  
(2.4 ACRES)



# PULLEN RV PARK EXPANSION



# QUESTIONS & DISCUSSION

## 1. IN-PERSON PARTICIPANTS

Please raise your hand if you have a question/comment to share.



## 2. MICROSOFT TEAMS VIDEO PARTICIPANTS:

Please type question into Chat Box to be read aloud and answered.



## 3. PHONE PARTICIPANTS:

When prompted...please unmute & indicate that you have a question.



**\*\*PLEASE BE CONSIDERATE OF EVERYONE'S TIME AND LIMIT YOUR QUESTION TO 3 MINUTES\*\***

WRITTEN COMMENTS & QUESTIONS CAN BE SUBMITTED TO: [PortofSkagway@skagway.org](mailto:PortofSkagway@skagway.org)  
UNTIL MARCH 10, 2021.

# THANK YOU!

Brad Ryan

Borough Manager

Municipality of Skagway

[Manager@skagway.org](mailto:Manager@skagway.org)

Mark Pusich

Principal Civil Engineer

PDC Engineers

[MarkPusich@pdceng.com](mailto:MarkPusich@pdceng.com)

Alex London

Planner

PDC Engineers

[AlexLondon@pdceng.com](mailto:AlexLondon@pdceng.com)

Patrick Cotter

Project Manager

PDC Engineers

[PatrickCotter@pdceng.com](mailto:PatrickCotter@pdceng.com)

Natalie Lyon

Planner

PDC Engineers

[NatalieLyon@pdceng.com](mailto:NatalieLyon@pdceng.com)

