



To: Brad Ryan, Borough Manager, Municipality of Skagway
From: Ross Hunnicutt, Construction Project Manager, KPFF Consulting Engineers
Cc: Cody Jennings, Emily Deach, Ed Debroeck

RE: Ore Peninsula Redevelopment Project, Pacific Pile & Marine
Change Order No. 004

Date: January 30th, 2024

Summary:

On July 25, 2023, The Municipality of Skagway (MOS) and Pacific Pile & Marine (PPM) entered into a contract for the Ore Dock Redevelopment Project. Below is a summary of the accepted changes in price to the Ore Dock Redevelopment Project to date, and Change Order 004.

Original Contract Price – \$39,402,785.48 (Thirty-Nine Million, Four-Hundred and Two Thousand Seven Hundred and Eighty-Five Dollars and 48/100) as specified and accepted in Exhibit A of the Contract.

Change Order No. 001 - \$125,280.49 approved October 19, 2023.
Change Order No. 002 - \$26,476.08 approved December 21, 2023.
Change Order No. 003 - \$ 15,627.67 approved January 4th, 2024.

Field Order No. 002 - \$ 300,000 approved November 20th, 2023
Field Order No. 003 - \$ 250,000 approved December 21, 2023

Current Contract Price - \$39,570,169.72

Original Contract Schedule – PPM shall have the base bid Work defined in Exhibit A of the Contract completed no later than April 21, 2024.

No Change to contract schedule.

Scope of Changes (Change Order 004):

PCO 17 – Dolphin 6 Template Trucking –	Additive cost \$ 10,000.00
PCO 22 – Cruise Dock Trestle Utility Supports –	Additive cost \$ 19,842.58
PCO 23 – Ore Loader Light Fixture ACM Abatement –	Additive cost \$ 4,399.56
PCO 26 – Field Order 04 - Steel Plate Procurement –	Additive cost \$ 1,740.28

Total Cost Impacts associated with Change Order 004:	\$ 35,982.42
Schedule Impact of this change(s):	0 Days

PCO 017 - Field Order 001 - Dolphin 6
Template Trucking

MoS and KPFF authorized the expedited delivery of template material via trucking to prevent project schedule impacts during material furnishing.

KPFF Recommends \$10,000 for approval at this time, extra costs require further justification.



Date: November 7, 2023

To: Nicole Egli, Project Manager
Pacific Pile & Marine

Subject: Skagway Ore Peninsula Redevelopment Project
Field Order – Dolphin 6 Delivery

Nicole,

This Field Order is being provided to Pacific Pile and Marine to accelerate the delivery of Dolphin 6 Template via trucking.

Please acknowledge that Dolphin 6 Template Delivery enables Pacific Pile and Marine to perform Dolphin 6 Pile Installation work activities independent of other pile procurement and delivery.

Trucking will be paid per General Conditions 00 72 00 Article 11 Section C Part 3. Cost of Actual Work Performed plus a contractor's fee per Articles 11.3 and 11.4. at a not to Exceed Value of \$10,000.

The Provisions of this Field Order are identified in the Contract General Conditions 00 72 00 Article 10.1.

This Field Order is exclusive of any other disputes or claims to changes in the work or contract time between KPFF/MoS and PPM.

Sincerely,

Ross Hunnicutt
Construction Project Manager



Ore Peninsula Redevelopment Project

OWNER: Municipality of Skagway
DESC: Field Order 1 - Dolphin 6 Template Trucking

START DATE: November 7, 2023
FINISH DATE: November 15, 2023

COST SUMMARY

DESCRIPTION OF WORK	COST TYPE	QUANT.	UNITS	UNIT RATE	LABOR (LAB)	SUPPLIES (SUP)	PPM EQUIP (PPM)	RENT EQUIP (RENT)	SUBCONT (SUB)	PERM MAT'L (PM)
Pacific Pile & Marine										
Unlash truck/stage materials	LAB	1.0	LS	\$495.66	\$496					
Move D6 template/materials for D.B. Lifter to pick	LAB	1.0	LS	\$191.21	\$191					
Move D6 template beams to cruise dock	LAB	1.0	LS	\$191.21	\$191					
Hyster 360 Forklift (moving template/materials)	PPM	2.0	HR	\$80.36			\$161			
10K Forklift (moving template/materials)	PPM	1.5	HR	\$154.80			\$232			
Hamilton Trucking D6 template from Jesse Co. Tacoma, WA to Skagway, AK	SUB	1.0	LS	\$10,000.00					\$10,000	

	LABOR	SUPPLIES	PPM EQUIP	RENT EQUIP	SUBS	PERM MATERIAL
SUBTOTALS:	\$878.09	\$0.00	\$392.92	\$0.00	\$10,000.00	\$0.00
Taxes @: 0.00%						
OH and Fee 15.0%			10.0%		10.0%	
Markup Totals	\$131.71	\$0.00	\$39.29	\$0.00	\$1,000.00	\$0.00
ITEM TOTALS	\$1,009.80	\$0.00	\$432.21	\$0.00	\$11,000.00	\$0.00

TOTAL AMOUNT	\$12,442.01
Bond	1.0% \$124.42
SUBTOTAL	\$12,566.43
GRAND TOTAL	\$12,566.43

Force Account Worksheet- Dolphin 6 Template

Work Affected: Field Order 1 - Dolphin 6 Template Trucking
Unlash truck and stage materials for dolphin 6 template. (0730-0830)

Date: 11/12/2013

FA Submittal No. Field Order 1 - Dolphin 6 Template Trucking

LABOR

EMPLOYEE NAME	CLASS	PER DIEM	HRS	RATE	COST
Morgan Rooney	Piledriver Foreman	\$10.92	1.0	\$118.90	\$129.82
Cecil Magone	Operator 1A	\$10.92	1.0	\$115.38	\$126.30
Samuel Resnick	PD Journeyman Welder	\$10.92	1.0	\$108.86	\$119.78
Bobby Parker	PD Journeyman Welder	\$10.92	1.0	\$108.86	\$119.78
					\$0.00
					\$0.00
					\$0.00
					\$0.00
					\$0.00
					\$0.00
					\$0.00
					\$0.00
					\$0.00
					\$0.00
					\$0.00
					\$0.00
TOTALS:		\$0.00	0.0		\$495.66

Rate Description:

Labor Clarifications
Labor classifications per certified payroll.
Per diem costs (housing and meals) are \$130.99/day prorated per a 12 hour working day.
Labor rates are fully burdened costs (Base rate + tax + union contributions + Workers compensation).
Straight/Overtime/Doubletime rates included as applicable to the day (weekday/weekend/holiday) and time of day of work performed.

Equipment Clarifications
Owned equipment rates per Rental Rate Blue Book - Alaska South region adjustment.
Markups per 00 72 00 11.4.A. of the Contract.

\$495.66

MARKUP @: 15% \$74.35
SUBTOTAL: \$570.01

EQUIPMENT

EQUIP. DESCRIPTION	WORKING TIME			STANDBY TIME			TOTAL
	HRS	RATE	COST	HRS	RATE	COST	
Hyster 360 (60 Ton) Forklift	1.0	\$80.36	\$80.36				\$80.36
10K Forklift	1.0	\$154.80	\$154.80				\$154.80
			\$0.00				\$0.00
			\$0.00				\$0.00
			\$0.00				\$0.00
			\$0.00				\$0.00
TOTALS:			\$235.16	0.0		\$0.00	\$235.16

MARKUP @: 10.0% \$23.52
SUBTOTAL: \$258.68

SUBCONTRACTOR & MATERIAL INVOICING

NAME	DESCRIPTION	Work Impacted	TOTAL
Hamilton Construction, LLC.	Truck D6 template and materials from Jesse Co., Tacoma, WA to Skagway, AK		\$10,000.00
TOTALS:			\$10,000.00

MARKUP @: 10.0% \$1,000.00
SUBTOTAL: \$11,000.00



This T&M sheet represents the direct cost associated with the activities on the date notated at the top of the sheet. Cumulative impact on project schedule and cost is not included within this breakdown and will be evaluated separately.

SUMMARY OF COSTS			
Cost	Markup	Totals	
LABOR: \$495.66	+ \$74.35	=	\$570.01
EQUIP: \$235.16	+ \$46.00	=	\$258.68
MATERIALS: \$10,000.00	+ \$1,000.00	=	\$11,000.00
TOTALS: \$10,730.82	+ \$1,120.35	=	\$11,851.17

PPM Representative: _____

MOS Representative: _____

Municipality of Skagway
Ore Peninsula Redevelopment Project

Force Account Worksheet- Dolphin 6 Template

Work Affected: Field Order 1 - Dolphin 6 Template PCO
Move dolphin 6 template and stage materials to be picked up by Lifter.

Date: 11/13/2023

FA Submittal No. Field Order 1 - Dolphin 6 Template PCO

LABOR

EMPLOYEE NAME	CLASS	PER DIEM	HRS	RATE	COST
Morgan Rooney	Piledriver Foreman	\$5.46	0.5	\$88.70	\$49.81
Cecil Magone	Operator 1A	\$5.46	0.5	\$86.02	\$48.47
Samuel Resnick	PD Journeyman Welder	\$5.46	0.5	\$82.02	\$46.47
Bobby Parker	PD Journeyman Welder	\$5.46	0.5	\$82.02	\$46.47
					\$0.00
					\$0.00
					\$0.00
					\$0.00
					\$0.00
					\$0.00
					\$0.00
					\$0.00
					\$0.00
					\$0.00
					\$0.00
					\$0.00
					\$0.00
					\$0.00
					\$0.00
					\$0.00
TOTALS:		\$0.00	0.0		\$191.21

PPM Description:

Labor Clarifications
Labor classifications per certified payroll.
Per diem costs (housing and meals) are \$130.99/day prorated per a 12 hour working day.
Labor rates are fully burdened costs (Base rate + tax + union contributions + Workers compensation).
Straight/Overtime/Doubletime rates included as applicable to the day (weekday/weekend/holiday) and time of day of work performed.

Equipment Clarifications
Owned equipment rates per Rental Rate Blue Book - Alaska South region adjustment.
Markups per 00 72 00 11.4.A. of the Contract.

\$191.21

MARKUP @: 15% \$28.68
SUBTOTAL: \$219.89

EQUIPMENT

EQUIP. DESCRIPTION	WORKING TIME			STANDBY TIME			TOTAL
	HRS	RATE	COST	HRS	RATE	COST	
Hyster 360 (60 Ton) Forklift	0.5	\$80.36	\$40.18				\$40.18
10K Forklift	0.5	\$154.80	\$77.40				\$77.40
			\$0.00				\$0.00
			\$0.00				\$0.00
			\$0.00				\$0.00
			\$0.00				\$0.00
			\$0.00				\$0.00
TOTALS:	1.0		\$117.58	0.0		\$0.00	\$117.58

MARKUP @: 10.0% \$11.76
SUBTOTAL: \$129.34

SUBCONTRACTOR & MATERIAL INVOICING

NAME	DESCRIPTION	Work Impacted	TOTAL
			-
TOTALS:			\$0.00

MARKUP @: 10.0% \$0.00
SUBTOTAL: \$0.00



Additional Notes:

This T&M sheet represents the direct cost associated with the activities on the date notated at the top of the sheet. Cumulative impact on project schedule and cost is not included within this breakdown and will be evaluated separately.

SUMMARY OF COSTS				Totals
Cost	Markup			
LABOR:	\$191.21	+	\$28.68	= \$219.89
EQUIP:	\$117.58	+	\$11.76	= \$129.34
MATERIALS:	\$0.00	+	\$0.00	= \$0.00
TOTALS:	\$308.79	+	\$40.44	= \$349.23

PPM Representative: _____
MOS Representative: _____

Force Account Worksheet- Dolphin 6 Template

Work Affected: **Field Order 1 - Dolphin 6 Template PCO**
 Move dolphin 6 template beams to existing cruise dock to be picked up by Lifter. (1115-1145)

Date: 11/15/2023

FA Submittal No. Field Order 1 - Dolphin 6 Template PCO

LABOR

EMPLOYEE NAME	CLASS	PER DIEM	HRS	RATE	COST
Morgan Rooney	Piledriver Foreman	\$5.46	0.5	\$88.70	\$49.81
Cecil Magone	Operator 1A	\$5.46	0.5	\$86.02	\$48.47
Samuel Resnick	PD Journeyman Welder	\$5.46	0.5	\$82.02	\$46.47
Bobby Parker	PD Journeyman Welder	\$5.46	0.5	\$82.02	\$46.47
					\$0.00
					\$0.00
					\$0.00
					\$0.00
					\$0.00
					\$0.00
					\$0.00
					\$0.00
					\$0.00
					\$0.00
					\$0.00
					\$0.00
					\$0.00
					\$0.00
					\$0.00
TOTALS:		\$0.00	0.0		\$191.21

PPM Description:

Labor Clarifications
 Labor classifications per certified payroll.
 Per diem costs (housing and meals) are \$130.99/day prorated per a 12 hour working day.
 Labor rates are fully burdened costs (Base rate + tax + union contributions + Workers compensation).
 Straight/Overtime/Doubletime rates included as applicable to the day (weekday/weekend/holiday) and time of day of work performed.

Equipment Clarifications
 Owned equipment rates per Rental Rate Blue Book - Alaska South region adjustment.
 Markups per 00 72 00 11.4.A. of the Contract.

\$191.21

MARKUP @: 15% \$28.68
SUBTOTAL: \$219.89

EQUIPMENT

EQUIP. DESCRIPTION	WORKING TIME			COST	STANDBY TIME			TOTAL
	HRS	RATE			HRS	RATE	COST	
Hyster 360 (60 Ton) Forklift	0.5	\$80.36		\$40.18				\$40.18
				\$0.00				\$0.00
				\$0.00				\$0.00
				\$0.00				\$0.00
				\$0.00				\$0.00
				\$0.00				\$0.00
				\$0.00				\$0.00
				\$0.00				\$0.00
TOTALS:	0.5			\$40.18	0.0		\$0.00	\$40.18

MARKUP @: 10.0% \$4.02
SUBTOTAL: \$44.20

SUBCONTRACTOR & MATERIAL INVOICING

NAME	DESCRIPTION	Work Impacted	TOTAL
			-
TOTALS:			\$0.00

MARKUP @: 10.0% \$0.00
SUBTOTAL: \$0.00



This T&M sheet represents the direct cost associated with the activities on the date notated at the top of the sheet. Cumulative impact on project schedule and cost is not included within this breakdown and will be evaluated separately.

SUMMARY OF COSTS				
Cost		Markup	Totals	
LABOR:	\$191.21	+	\$28.68 =	\$219.89
EQUIP:	\$40.18	+	\$4.02 =	\$44.20
MATERIALS:	\$0.00	+	\$0.00 =	\$0.00
TOTALS:	\$231.39	+	\$32.70 =	\$264.09

PPM Representative: _____

MOS Representative: _____

Skagway Ore Peninsula Redevelopment
Pacific Pile and Marine Project No. 23009

Date Work Performed: 11/13/2023

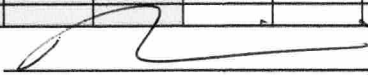
Description: Dolphin 6 Template PCO

Move template materials to be picked up by Pacific Lifter

Phase Code: _____

Craft Code	QUANTITY			UOM	NOTES
	RT	OT	DT		
LABOR					
	HR	HR	HR		
Morgan Rooney	0.5				Move template/stage materials
Cecil Magone	0.5				Move template/stage materials
Samuel Resnick	0.5				Move template/stage materials
Bobby Parker	0.5				Move template/stage materials
	EQ#				
EQUIPMENT					
Hyster 60 Ton Forklift	0.5				Move template
10k Forklift	0.5				Move template
	INVOICE	QTY	UNIT		
MATERIALS					
	INVOICE	QTY	UNIT		
SUBCONTRACTORS					
	INVOICE	QUANTITY	UNIT		
SERVICES					

OWNER REPRESENTATIVE



11/19/23

Date

PPM REPRESENTATIVE

Date

Skagway Ore Peninsula Redevelopment Inspector Daily Report (IDR)

Skagway Ore Peninsula Redevelopment		KPFF Job # 2100135	
Inspector:	William Hammac Pacific CM	Date: 11.13.2023	Day: Monday
Work time(s) Contractor:	<i>Pacific Pile and Marine</i>	Start: 7:00 am	Stop: 5:00 pm
Work time(s) Contractor:	<i>PPM Broadway yard</i>	Start: 6:00 am	Stop: 6:00 pm
Work time(s) Contractor:	<i>PPM Redemption</i>	Start: 6:00 am	Stop: 6:00 pm
Work time(s) Contractor:	<i>PPM Pacific Lifter</i>	Start: 6:00 am	Stop: 6:00 pm
Work time(s) Subcontractor	<i>Central Environmental, Inc. (CEI) Abatement</i>	Start: 6:00 am	Stop: 3:00 pm
Work time(s) Inspections: Pacific CM		Start: 6:30 am	Stop: 5:00 pm
Weather: 14° -30° AM: Cloudy PM: Cloudy with snow beginning at 2:00 p.m.		Precipitation: Trace	


Inspector notes:

Dolphin 6 template was inventoried by Pacific CM.

Redemption relocated to Broadway Yard to pick up Template 6. The crew was transporting material after 3:00 p.m.

PPM Pacific Lifter installed the frame for the falsework for lifting the 5 concrete segments of the ore loader concrete cap.

The 3 workers in the Broadway yard continued with the template pile fabrication.

PPM Yam sheet 11/13/23


Hamilton has completed a necessary coatings repairs in all locations.

An inventory was conducted at the Hamilton Yard and 6 fenders and 3 dolphin caps were noted. Two caps were in the Broadway yard and another one cap was on the Thelma.

Projected schedule for critical work.

Task		Mike Completion date	PPM completion date
Repair coatings on pile	<i>Hamilton</i>	11/08	
Core 2" bolt holes in ore loader concrete cap	<i>CEI</i>	11/09	11/08
Install false work over/under platform	<i>Lifter</i>	11/14	11/09
Diamond rope saw concrete cap	<i>CEI</i>	11/22	11/19
Demo ore loader concrete platform	<i>Lifter</i>	11/24	11/21
Demo ore loader pile	<i>Lifter</i>	11/27	
Install Dolphin 3 hardware	<i>Redemption</i>	11/11	11/10
Demo existing dolphin #2 and #3	<i>Redemption</i>	11/13	
Install dolphin 6 template (delivery ?)	<i>Redemption</i>	11/19	11/18

Document review for today include:

- CRUISE DOCK TRESTLE
- Structural plans for S3.00 sheet #176 to S3.29 sheet #189
- DOLPHIN 6
- Structural plans for S7.05 Sheet #232, S7.15 Sheet 238, and Submittal No. 32.

Skagway Ore Peninsula Redevelopment
Pacific Pile and Marine Project No. 23009

Date Work Performed: 11/15/2023

Description: Dolphin 6 Template PCO

Move template beams to existing cruise dock (1115-1145)

Phase Code: _____

Craft Code	QUANTITY			UOM	NOTES
	RT	OT	DT		
LABOR	HR	HR	HR		
Morgan Rooney	0.5				Move template/stage materials
Cecil Magone	0.5				Move template/stage materials
Samuel Resnick	0.5				Move template/stage materials
Bobby Parker	0.5				Move template/stage materials
EQUIPMENT	EQ #				
Hyster 60 Ton Forklift	0.5				Move template
10k Forklift					
MATERIALS	INVOICE	QTY	UNIT		
SUBCONTRACTORS	INVOICE	QTY	UNIT		
SERVICES	INVOICE	QUANTITY	UNIT		

OWNER REPRESENTATIVE

Date

PPM REPRESENTATIVE

Date

PACIFIC PILE AND MARINE, L.P.
Wage Rate - Marine Construction
Alaska - Straight time

\$ 9.00

Classification	Base	Tax	Union	Workers Comp	TOTAL
		9.29%		\$9.00 per \$100 of payroll	
<u>AK Piledrivers 252 (9-1-23 to 08-31-24)</u>					
Piledriver Apprentice 1	26.63	2.47	28.32	2.40	59.82
Piledriver Apprentice 2	31.07	2.89	28.32	2.80	65.08
Piledriver Apprentice 3	35.51	3.30	28.32	3.20	70.33
Piledriver Apprentice 4	39.95	3.71	28.32	3.60	75.58
Piledriver Diver	88.50	8.22	28.32	7.97	133.01
Piledriver Stand-by Diver	48.70	4.52	28.32	4.38	85.92
Piledriver Tender	47.70	4.43	28.32	4.29	84.74
Piledriver Journeyman	44.39	4.12	28.32	4.00	80.83
Piledriver Journeyman Welder	45.39	4.22	28.32	4.09	82.02
Piledriver Certified Weld Inspector	49.95	4.64	28.32	4.50	87.41
Piledriver Foreman	51.05	4.74	28.32	4.59	88.70
Piledriver General Foreman	64.48	5.99	28.32	5.80	104.59
Piledriver Superintendent (10%)	67.97	6.31	28.32	6.12	108.72
Piledriver Superintendent (15%)	71.06	6.60	28.32	6.40	112.38
<u>AK OP ENG 302 (04-01-23 to 12-31-23)</u>					
Operator Group 1	47.74	4.44	27.30	4.30	83.78
Operator Group 1A	49.64	4.61	27.30	4.47	86.02
Operator Group 2	46.91	4.36	27.30	4.22	82.79
Operator Group 3	46.13	4.29	27.30	4.15	81.87
Operator Group 4	39.42	3.66	27.30	3.55	73.93
Operator Foreman	53.64	4.98	27.30	4.83	90.75
Operator General Foreman	64.48	5.99	27.30	5.80	103.57
Operator Superintendent (10%)	67.97	6.31	27.30	6.12	107.70
Operator Superintendent (15%)	71.06	6.60	27.30	6.40	111.36
Operator Appr 1 - 60%	28.64	2.66	27.30	2.58	61.18
Operator Appr 2 - 70%	33.42	3.10	27.30	3.01	66.83
Operator Appr 3 - 80%	38.19	3.55	27.30	3.44	72.48
Operator Appr 4 - 85%	40.58	3.77	27.30	3.65	75.30
Operator Appr 5 - 90%	42.97	3.99	27.30	3.87	78.12
Operator Appr 6 - 95%	45.35	4.21	27.30	4.08	80.94
<u>Laborers: 341/942 (4-1-23 to 3-31-26)</u>					
Laborer Appr 1 - 70%	25.20	2.34	32.86	2.27	62.67
Laborer Appr 2 - 80%	28.80	2.68	32.86	2.59	66.93
Laborer Appr 3 - 90%	32.40	3.01	32.86	2.92	71.19
Laborer Appr 4 - 95%	34.20	3.18	32.86	3.08	73.32
Laborer GP 1	36.00	3.34	32.86	3.24	75.44
Laborer GP 2	37.00	3.44	32.86	3.33	76.63
Laborer GP 3	37.90	3.52	32.86	3.41	77.69
Laborer GP 3A	41.78	3.88	32.86	3.76	82.28
Laborer GP 3B	47.36	4.40	28.81	4.26	84.83
Laborer GP 4	25.57	2.38	32.86	2.30	63.11
Laborer Foreman	49.86	4.63	32.86	4.49	91.84

PACIFIC PILE AND MARINE, L.P.
Wage Rate - Marine Construction
Alaska - Time and a Half

\$ 9.00

Classification	Base	Tax	Union	Workers Comp \$9.00 per \$100 of payroll	TOTAL
					9.29%
<u>AK Piledrivers 252 (9-1-23 to 08-31-24)</u>					
Piledriver Apprentice 1	39.95	3.71	28.32	3.60	75.57
Piledriver Apprentice 2	46.61	4.33	28.32	4.19	83.45
Piledriver Apprentice 3	53.27	4.95	28.32	4.79	91.33
Piledriver Apprentice 4	59.93	5.57	28.32	5.39	99.21
Piledriver Diver	132.75	12.33	28.32	11.95	185.35
Piledriver Stand-by Diver	73.05	6.79	28.32	6.57	114.73
Piledriver Tender	71.55	6.65	28.32	6.44	112.96
Piledriver Journeyman	66.59	6.19	28.32	5.99	107.09
Piledriver Journeyman Welder	68.09	6.33	28.32	6.13	108.86
Piledriver Certified Weld Inspector	74.93	6.96	28.32	6.74	116.95
Piledriver Foreman	76.58	7.11	28.32	6.89	118.90
Piledriver General Foreman	96.72	8.99	28.32	8.70	142.73
Piledriver Superintendent (10%)	101.96	9.47	28.32	9.18	148.92
Piledriver Superintendent (15%)	106.59	9.90	28.32	9.59	154.40
<u>AK OP ENG 302 (04-01-23 to 12-31-23)</u>					
Operator Group 1	71.61	6.65	27.30	6.44	112.00
Operator Group 1A	74.46	6.92	27.30	6.70	115.38
Operator Group 2	70.37	6.54	27.30	6.33	110.54
Operator Group 3	69.20	6.43	27.30	6.23	109.15
Operator Group 4	59.13	5.49	27.30	5.32	97.24
Operator Foreman	80.46	7.47	27.30	7.24	122.47
Operator General Foreman	96.72	8.99	27.30	8.70	141.71
Operator Superintendent (10%)	101.96	9.47	27.30	9.18	147.90
Operator Superintendent (15%)	106.59	9.90	27.30	9.59	153.38
Operator Appr 1 - 60%	42.97	3.99	27.30	3.87	78.12
Operator Appr 2 - 70%	50.13	4.66	27.30	4.51	86.60
Operator Appr 3 - 80%	57.29	5.32	27.30	5.16	95.06
Operator Appr 4 - 85%	60.87	5.65	27.30	5.48	99.30
Operator Appr 5 - 90%	64.45	5.99	27.30	5.80	103.54
Operator Appr 6 - 95%	68.03	6.32	27.30	6.12	107.77
<u>Laborers: 341/942 (4-1-23 to 3-31-26)</u>					
Laborer Appr 1 - 60%	37.80	3.51	32.86	3.40	77.57
Laborer Appr 2 - 70%	43.20	4.01	32.86	3.89	83.96
Laborer Appr 3 - 80%	48.60	4.51	32.86	4.37	90.34
Laborer Appr 4 - 90%	51.30	4.77	32.86	4.62	93.55
Laborer GP 1	54.00	5.02	32.86	4.86	96.74
Laborer GP 2	55.50	5.16	32.86	5.00	98.52
Laborer GP 3	56.85	5.28	32.86	5.12	100.11
Laborer GP 3A	62.67	5.82	32.86	5.64	106.99
Laborer GP 3B	71.04	6.60	28.81	6.39	112.84
Laborer GP 4	38.36	3.56	32.86	3.45	78.23
Laborer Foreman	74.79	6.95	32.86	6.73	121.33

PACIFIC PILE AND MARINE, L.P.
Wage Rate - Marine Construction
Alaska - Double Time

\$ 9.00

Classification	Base	Tax	Union	Workers Comp \$9.00 per \$100 of payroll	TOTAL
					9.29%
<u>AK Piledrivers 252 (9-1-23 to 08-31-24)</u>					
Piledriver Apprentice 1	53.26	4.95	28.32	4.79	91.32
Piledriver Apprentice 2	62.14	5.77	28.32	5.59	101.82
Piledriver Apprentice 3	71.02	6.60	28.32	6.39	112.33
Piledriver Apprentice 4	79.90	7.42	28.32	7.19	122.83
Piledriver Diver	177.00	16.44	28.32	15.93	237.69
Piledriver Stand-by Diver	97.40	9.05	28.32	8.77	143.54
Piledriver Tender	95.40	8.86	28.32	8.59	141.17
Piledriver Journeyman	88.78	8.25	28.32	7.99	133.34
Piledriver Journeyman Welder	90.78	8.43	28.32	8.17	135.70
Piledriver Certified Weld Inspector	99.90	9.28	28.32	8.99	146.49
Piledriver Foreman	102.10	9.49	28.32	9.19	149.10
Piledriver General Foreman	128.96	11.98	28.32	11.61	180.87
Piledriver Superintendent (10%)	135.94	12.63	28.32	12.23	189.12
Piledriver Superintendent (15%)	142.12	13.20	28.32	12.79	196.43
<u>AK OP ENG 302 (04-01-23 to 12-31-23)</u>					
Operator Group 1	95.48	8.87	27.30	8.59	140.24
Operator Group 1A	99.28	9.22	27.30	8.94	144.74
Operator Group 2	93.82	8.72	27.30	8.44	138.28
Operator Group 3	92.26	8.57	27.30	8.30	136.43
Operator Group 4	78.84	7.32	27.30	7.10	120.56
Operator Foreman	107.28	9.97	27.30	9.66	154.21
Piledriver General Foreman	128.96	11.98	27.30	11.61	179.85
Operator Superintendent (10%)	135.94	12.63	27.30	12.23	188.10
Operator Superintendent (15%)	142.12	13.20	27.30	12.79	195.41
Operator Appr 1 - 60%	57.29	5.32	27.30	5.16	95.06
Operator Appr 2 - 70%	66.84	6.21	27.30	6.02	106.36
Operator Appr 3 - 80%	76.38	7.10	27.30	6.87	117.66
Operator Appr 4 - 85%	81.16	7.54	27.30	7.30	123.30
Operator Appr 5 - 90%	85.93	7.98	27.30	7.73	128.95
Operator Appr 6 - 95%	90.71	8.43	27.30	8.16	134.60
<u>Laborers: 341/942 (4-1-23 to 3-31-26)</u>					
Laborer Appr 1 - 60%	50.40	4.68	32.86	4.54	92.48
Laborer Appr 2 - 70%	57.60	5.35	32.86	5.18	100.99
Laborer Appr 3 - 80%	64.80	6.02	32.86	5.83	109.51
Laborer Appr 4 - 90%	68.40	6.35	32.86	6.16	113.77
Laborer GP 1	72.00	6.69	32.86	6.48	118.03
Laborer GP 2	74.00	6.87	32.86	6.66	120.39
Laborer GP 3	75.80	7.04	32.86	6.82	122.52
Laborer GP 3A	83.56	7.76	32.86	7.52	131.70
Laborer GP 3B	94.72	8.80	28.81	8.52	140.85
Laborer GP 4	51.14	4.75	32.86	4.60	93.35
Laborer Foreman	99.72	9.26	32.86	8.97	150.81



Hamilton Construction, LLC
P.O. Box 648
Skagway, Alaska 99840-0648
907-983-2702

Contract Invoice

Invoice#: 8241
Date: 11/07/2023

Billed To: Pacific Pile & Marine, LP
700 South Riverside Drive
Seattle WA 98108

Project: Pacific Pile NON-Contract
700 South Riverside Drive
Seattle WA 98108

Due Date: 12/07/2023

Terms: 30DY

Order# 31197

Description	QTY	Unit	Price	Amount
PO 31197				
Trucking Dolphin 6 Template from Jesse Co. in Tacoma to Skagway	1.00	JOB	\$10,000.00	\$10,000.00

A service charge of 0.00 % per annum will be charged on all amounts overdue on regular statement dates.

Thank you for your prompt payment!

Non-Taxable Amount:	10,000.00
Taxable Amount:	0.00
Sales Tax:	0.00
Amount Due	10,000.00

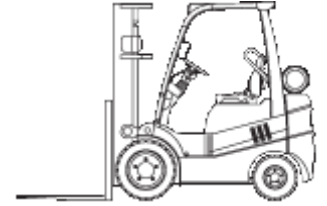
Rental Rate Blue Book®
Hyster H360XL (disc. 2005)

I.C. Pneumatic Tire Lift Trucks

Size Class:

30,000 - 49,999 lbs

Weight:

41235 lbs

Configuration for H360XL (disc. 2005)

 Horsepower **127.0** Power Mode **Diesel**
Blue Book Rates

** FHWA Rate is equal to the monthly ownership cost divided by 176 plus the hourly estimated operating cost.

	Ownership Costs				Estimated Operating Costs Hourly	FHWA Rate** Hourly
	Monthly	Weekly	Daily	Hourly		
Published Rates	USD \$4,700.00	USD \$1,315.00	USD \$330.00	USD \$50.00	USD \$34.45	USD \$61.15
Adjustments						
Region (Alaska - South: 171.9%)	USD \$3,379.30	USD \$945.48	USD \$237.27	USD \$35.95		
Model Year (2005: 100%)	-	-	-	-		
Adjusted Hourly Ownership Cost (100%)	-	-	-	-		
Hourly Operating Cost (100%)					-	
Total:	USD \$8,079.30	USD \$2,260.49	USD \$567.27	USD \$85.95	USD \$34.45	USD \$80.36

Non-Active Use Rates

	Hourly
Standby Rate	USD \$33.97
Idling Rate	USD \$61.96

Rate Element Allocation

Element	Percentage	Value
Depreciation (ownership)	28%	USD \$1,316.00/mo
Overhaul (ownership)	26%	USD \$1,222.00/mo
CFC (ownership)	22%	USD \$1,034.00/mo
Indirect (ownership)	24%	USD \$1,128.00/mo
Fuel (operating) @ USD 4.39	46.59%	USD \$16.05/hr

Revised Date: 4th quarter 2023

These are the most accurate rates for the selected Revision Date(s). However, due to more frequent online updates, these rates may not match Rental Rate Blue Book Print. Visit the Cost Recovery Product Guide on our Help page for more information.

 The equipment represented in this report has been exclusively prepared for PACIFIC PILE
 (kustaa@pacificpile.com)

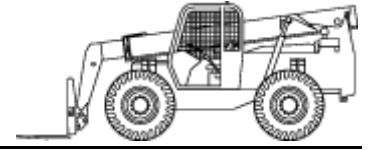
Rental Rate Blue Book®
Skyjack SJ1044 TH

Telescoping Boom Rough Terrain Lift Trucks

Size Class:

4.5 - 4.9 mt

Weight:

N/A

Configuration for SJ1044 TH

Base Capacity	10000 lbs	Horsepower	74 hp
Maximum Lift Height	531 in	Maximum Reach	352 in
Power Mode	Diesel		

Blue Book Rates

** FHWA Rate is equal to the monthly ownership cost divided by 176 plus the hourly estimated operating cost.

	Ownership Costs				Estimated Operating Costs	FHWA Rate**
	Monthly	Weekly	Daily	Hourly	Hourly	Hourly
Published Rates	USD \$14,175.00	USD \$3,970.00	USD \$995.00	USD \$150.00	USD \$49.53	USD \$130.07
Adjustments						
Region (Alaska - South: 130.7%)	USD \$4,351.73	USD \$1,218.79	USD \$305.46	USD \$46.05		
Model Year (2023: 100%)	-	-	-	-		
Adjusted Hourly Ownership Cost (100%)	-	-	-	-		
Hourly Operating Cost (100%)					-	
Total:	USD \$18,526.72	USD \$5,188.79	USD \$1,300.46	USD \$196.05	USD \$49.53	USD \$154.80

Non-Active Use Rates

Standby Rate	Hourly	USD \$38.95
Idling Rate	Hourly	USD \$114.40

Rate Element Allocation

Element	Percentage	Value
Depreciation (ownership)	14%	USD \$1,984.50/mo
Overhaul (ownership)	63%	USD \$8,930.25/mo
CFC (ownership)	11%	USD \$1,559.25/mo
Indirect (ownership)	12%	USD \$1,701.00/mo
Fuel (operating) @ USD 4.39	18.43%	USD \$9.13/hr

Revised Date: 4th quarter 2023

These are the most accurate rates for the selected Revision Date(s). However, due to more frequent online updates, these rates may not match Rental Rate Blue Book Print. Visit the Cost Recovery Product Guide on our Help page for more information.

 The equipment represented in this report has been exclusively prepared for PACIFIC PILE
 (kustaa@pacificpile.com)

PCO 022 - Cruise Dock Utility Supports

PPM provided the proposed change to provide utility supports on the Cruise Dock Trestle for the future fire line.

KPFF Recommends \$19,842.58 for approval

Ore Peninsula Redevelopment Project

OWNER: Municipality of Skagway
DESC: PCO 022 - CD Utility Supports

START DATE: TBD
FINISH DATE: April 21, 2024

COST SUMMARY

DESCRIPTION OF WORK	COST TYPE	QUANT.	UNITS	UNIT RATE	LABOR (LAB)	SUPPLIES (SUP)	PPM EQUIP (PPM)	RENT EQUIP (RENT)	SUBCONT (SUB)	PERM MAT'L (PM)
Unistrut Supports	PM	1.0	LS	\$5,218.18						\$5,218
Hilti Anchors and Epoxy	PM	1.0	LS	\$2,021.00						\$2,021
SEA Material Shipping	PM	1.0	LS	\$1,000.00						\$1,000
SEA Handling	LAB	1.0	LS	\$300.00	\$300					
Rebar Scanning Tech - Locate Existing Concrete Reinforcement Conflicts	SUB	1.0	LS	\$3,000.00					\$3,000	
Field Install (including per diem)	LAB	24.0	HR	\$105.50	\$2,532					
Project Management	LAB	1.0	LS	\$1,007.12	\$1,007					
10K Forklift (handling materials)	PPM	12.0	HR	\$154.80			\$1,858			
Demag 2500 Crane (offloading materials)	PPM	0.5	HR	\$805.81			\$403			
SUBTOTALS:					\$3,839.12	\$0.00	\$2,260.51	\$0.00	\$3,000.00	\$8,239.18
Taxes @: 0.00%										
OH and Fee					15.0%	10.0%	10.0%	10.0%	10.0%	10.0%
Markup Totals					\$575.87	\$0.00	\$226.05	\$0.00	\$300.00	\$823.92
ITEM TOTALS					\$4,414.99	\$0.00	\$2,486.56	\$0.00	\$3,300.00	\$9,063.10

RFI 048 and 100: Addition of cruise dock trestle utility supports as shown on S11.00 to contract. Utilities and supports were removed from contract as part of project descopeing.

Note 3. S11.00 requires locating existing reinforcement prior to installing utility support anchors. Proposal assumes a rebar scanning technician will be required for this scope.



Shipping costs are to PPM Seattle yard. Materials to be loaded and shipped to Skagway as part of scheduled PPM material barge.

TOTAL AMOUNT	\$19,264.64
Add-ons/Bond	3.0%
SUBTOTAL	\$19,842.58
GRAND TOTAL	\$19,842.58



Cart - Hilti USA 12/14/2023, 9:36:08 AM

PURCHASED ITEMS

DESCRIPTION	PACKAGING UNIT	PRICE / UNIT	QUANTIT Y	TOTAL PRICE
 Screw anc KH-EZ 1/2" x 3" #418071 1x KH-EZ 1/2" x 3" Screw	30 pc	\$106.00 / 1 Box	2	\$212.00
 Epoxy adh RE 500-V3 16.9oz/500ml #2123404 1x Foil pack 1x Mixer 1x Mixer extension	20 pc	\$1,809.00 / 1 Box	1	\$1,809.00

This is your **discounted net price** – shipping and other charges may apply. You will have a chance to review those charges during checkout.

Subtotal purchase items

Total purchase items

\$2,021.00

Hilti = registered trademark of Hilti Corporation, 9494 Schaan, Liechtenstein
© 2009-2021, Right of technical and program changes reserved, S.E. & O.

Hilti USA

Service Hotline: (800) 879-8000

In accordance with our privacy policy, while using this site you consent to us placing cookies on your computer to help make this website better.
[Privacy_policy](#)

AGREE AND CLOSE

Rental Rate Blue Book®

December 10, 2023

Kobelco CK2750G (disc. 2019)

Crawler Mounted Lattice Boom Cranes


 Size Class:
200.5 mt & Over
 Weight:
N/A
Configuration for CK2750G (disc. 2019)

Boom Base Length	50.0 ft	Maximum Lift Capacity	0.0 lbs
Horsepower	363.0 hp	Power Mode	Diesel

Blue Book Rates

** FHWA Rate is equal to the monthly ownership cost divided by 176 plus the hourly estimated operating cost.

	Ownership Costs				Estimated Operating Costs Hourly	FHWA Rate** Hourly
	Monthly	Weekly	Daily	Hourly		
Published Rates	USD \$65,045.00	USD \$18,215.00	USD \$4,555.00	USD \$685.00	USD \$252.93	USD \$622.50
Adjustments						
Region (Alaska - South: 149.6%)	USD \$32,262.32	USD \$9,034.64	USD \$2,259.28	USD \$339.76		
Model Year (2019: 100%)	-	-	-	-		
Adjusted Hourly Ownership Cost (100%)	-	-	-	-		
Hourly Operating Cost (100%)					-	
Total:	USD \$97,307.32	USD \$27,249.64	USD \$6,814.28	USD \$1,024.76	USD \$252.93	USD \$805.81

Non-Active Use Rates

Standby Rate	Hourly	USD \$326.20
Idling Rate	Hourly	USD \$605.46

Rate Element Allocation

Element	Percentage	Value
Depreciation (ownership)	26%	USD \$16,911.70/mo
Overhaul (ownership)	41%	USD \$26,668.45/mo
CFC (ownership)	17%	USD \$11,057.65/mo
Indirect (ownership)	16%	USD \$10,407.20/mo
Fuel (operating) @ USD 4.39	20.79%	USD \$52.58/hr

Revised Date: 4th quarter 2023

These are the most accurate rates for the selected Revision Date(s). However, due to more frequent online updates, these rates may not match Rental Rate Blue Book Print. Visit the Cost Recovery Product Guide on our Help page for more information.

The equipment represented in this report has been exclusively prepared for PACIFIC PILE (kustaa@pacificpile.com)

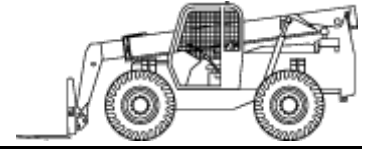
Rental Rate Blue Book®
Skyjack SJ1044 TH

Telescoping Boom Rough Terrain Lift Trucks

Size Class:

4.5 - 4.9 mt

Weight:

N/A

Configuration for SJ1044 TH

Base Capacity	10000 lbs	Horsepower	74 hp
Maximum Lift Height	531 in	Maximum Reach	352 in
Power Mode	Diesel		

Blue Book Rates

** FHWA Rate is equal to the monthly ownership cost divided by 176 plus the hourly estimated operating cost.

	Ownership Costs				Estimated Operating Costs	FHWA Rate**
	Monthly	Weekly	Daily	Hourly	Hourly	Hourly
Published Rates	USD \$14,175.00	USD \$3,970.00	USD \$995.00	USD \$150.00	USD \$49.53	USD \$130.07
Adjustments						
Region (Alaska - South: 130.7%)	USD \$4,351.73	USD \$1,218.79	USD \$305.46	USD \$46.05		
Model Year (2023: 100%)	-	-	-	-		
Adjusted Hourly Ownership Cost (100%)	-	-	-	-		
Hourly Operating Cost (100%)					-	
Total:	USD \$18,526.72	USD \$5,188.79	USD \$1,300.46	USD \$196.05	USD \$49.53	USD \$154.80

Non-Active Use Rates

Standby Rate	Hourly	USD \$38.95
Idling Rate	Hourly	USD \$114.40

Rate Element Allocation

Element	Percentage	Value
Depreciation (ownership)	14%	USD \$1,984.50/mo
Overhaul (ownership)	63%	USD \$8,930.25/mo
CFC (ownership)	11%	USD \$1,559.25/mo
Indirect (ownership)	12%	USD \$1,701.00/mo
Fuel (operating) @ USD 4.39	18.43%	USD \$9.13/hr

Revised Date: 4th quarter 2023

These are the most accurate rates for the selected Revision Date(s). However, due to more frequent online updates, these rates may not match Rental Rate Blue Book Print. Visit the Cost Recovery Product Guide on our Help page for more information.

 The equipment represented in this report has been exclusively prepared for PACIFIC PILE
 (kustaa@pacificpile.com)

Ships today

1	Strut Channel Pivot	12	\$129.32	\$1,551.84
	304 Stainless Steel, 5-3/8" Long	Each	Each	
	33125T822			

Ships today from our New Jersey warehouse

2	Strut Channel Bracket	24	\$35.32	\$847.68
	45 Degree, 316 Stainless Steel, 3-11/16" Length	Each	Each	
	33125T953			

Ships today

3	Strut Channel Bracket	12	\$14.74	\$176.88
	90 Degree, 316 Stainless Steel, 4-1/8" Length	Each	Each	
	33125T415			

Delivers in 5-6 weeks

Need this sooner?

4	Strut Channel Bracket	12	\$29.39	\$352.68
	Any-Angle, 304 Stainless Steel	Each	Each	
	33125T132			

Ships today via freight

5	Strut Channel	10	\$228.91	\$2,289.10
	Slotted Hole, 316 Stainless Steel, 10 Feet Length	Each	Each	
	33085T79			

Length, ft.

10 ft.

Merchandise \$5,218.18

Applicable shipping and tax will be added.

PCO 023 - Ore Loader Light Fixture ACM
Abatement

While performing abatement and removal of
Ore Platform Tower, additional asbestos
containing material was discovered requiring
removal.

KPFF Recommends \$4,399.56 for approval

Ore Peninsula Redevelopment Project

OWNER: Municipality of Skagway
DESC: PCO 023 - Ore Loader Light Fixture Abatement

START DATE: November 30, 2023
FINISH DATE: TBD

COST SUMMARY

DESCRIPTION OF WORK	COST TYPE	QUANT.	UNITS	UNIT RATE	LABOR (LAB)	SUPPLIES (SUP)	PPM EQUIP (PPM)	RENT EQUIP (RENT)	SUBCONT (SUB)	PERM MAT'L (PM)
CEI Removal and Disposal of (10) Light Fixtures with Asbestos Containing Materials (ACM)	SUB	1.0	LS	\$3,960.00					\$3,960	

Light fixtures were not identified in the Supplemental Hazardous Materials Survey Report as an assumed asbestos containing material.

	LABOR	SUPPLIES	PPM EQUIP	RENT EQUIP	SUBS	PERM MATERIAL
SUBTOTALS:	\$0.00	\$0.00	\$0.00	\$0.00	\$3,960.00	\$0.00
Taxes @: 0.00%						
OH and Fee 15.0%	10.0%	10.0%	10.0%	10.0%	10.0%	10.0%
Markup Totals	\$0.00	\$0.00	\$0.00	\$0.00	\$396.00	\$0.00
ITEM TOTALS	\$0.00	\$0.00	\$0.00	\$0.00	\$4,356.00	\$0.00

TOTAL AMOUNT	\$4,356.00
Add-ons/Bond 1.0%	\$43.56
SUBTOTAL	\$4,399.56
GRAND TOTAL	\$4,399.56



CENTRAL ENVIRONMENTAL INC.
The Solutions Company

November 29th, 2023

**To: Pacific Pile & Marine
700 S Riverdale Drive
Seattle, WA 98108**

Attn: Chris Lundfelt

Re: Skagway Ore Loader – Abate Lights

Subj: Cost Proposal

Chris,

Central Environmental, Inc. (CEI) proposes to remove and dispose of 10 light fixtures containing ACM for the price of **\$3,960**.

This price is based on performing the work while we are already on-site performing other Contract work.

This price does not include housing or any required air monitoring.

If you have any questions, please feel free to give me a call at **(907) 632-6546**.
Thank you for the opportunity to quote this work.

Regards,

Tali Landau, Estimator

ANCHORAGE
229 E Whitney Rd
Suite 200
Anchorage, AK 99501
907 561 0125

FAIRBANKS
1301 Well Street
Fairbanks, AK 99701
907 456 1153

NEVADA LICENSES
5980 West Cougar Ave
Las Vegas, NV 89139
702 362 5470
NV #0063926 NV#0047441

CALIFORNIA LICENSES
California Licenses #507052

cei-alaska.com



383 Industrial Way, Suite 300
 Anchorage, AK 99501 (907) 921-6014
 anchorage@oneatlas.com



Lab Code 200124-0

PLM BULK SAMPLE ANALYSIS FOR ASBESTOS

Lab Login #: 0232657 Report #: 0232657
 Atlas Job #: NA Report By: A. Lang
 Client Project #: 14480 Report Date: 10/24/2023

Client: Central Environmental Inc.
 229 E. Whitney Rd.
 Anchorage, AK 99501
 Collected By: Client
 Collection Date: 10/20/2023
 Analyzed By: A. Lang
 Date Analyzed: 10/24/2023

TAT: RUSH Sample Count: 1 Layer Count: 1
 Project Name/ Location: Skagway Ore Terminal
 Received By: A. Lang
 Received Date: 10/23/2023

Laboratory ID Sample No.	Sample Location Description	Layer No. Layer %	Non-Asbestos Components (%)	Asbestos Type (%)
0232657-001	Beige Cardboard/Paper from Light Fixture	LAYER 1		
14480-BK02	Paper Tape, Beige, Homogeneous, Fibrous	100%	Cellulose Fiber 20% Synthetic Fiber 15% Other Non-Fibrous Material 35%	Chrysotile 30%
			Total % Non-Asbestos: 70.0%	Total % Asbestos: 30.0%

Analyzed by: Amanda Lang 10/24/2023
 Amanda Lang Date
 Approved Signatory: Michael Ann Pike 10/24/2023
 Michael Ann Pike, Certified Analyst Date

Asbestos Containing Material (ACM) Definition: >1% asbestos by weight. <1% Results recommend verification by Point Count may be necessary for a more accurate and precise result.
 TRACE Results signify confidence that the concentration is so low that additional testing is not necessary.
 The Atlas Anchorage Laboratory is accredited by the National Voluntary Laboratory Accreditation Program (NVLAP Lab Code: 200124-0) and in accordance with the recognized International Standard ISO/IEC 10725:2017. Analysis performed by: EPA-40 CFR Appendix E to Subpart E of Part 763, Interim Method of the Determination of Asbestos in Bulk Insulation Samples or EPA Method 600/R-93/116: Method for the Determination of Asbestos in Bulk Building Materials at the discretion of the client or Atlas.
 Unless a point-counting method is requested and noted for the sample, all quantities reported are based on calibrated visual estimation by Polarized Light Microscopy (PLM). Non-homogenous samples will be layered for testing unless stop-positive is requested by the client or otherwise stated in the chain of custody (COC). Asbestos results are reliable within 2 significant figures.
 Analysis Report generated by Atlas relates only to items tested and submitted on the COC and must not be used by clients to claim product endorsement by the National Voluntary Laboratory Accreditation Program (NVLAP) or any agency of the U.S Government. This report shall not be reproduced, except in full, without written approval of the laboratory. Conditions of samples upon receipt were acceptable unless otherwise stated.
 Liability Notice: Atlas and its personnel shall not be liable for any misinformation provided to us by the client regarding these samples.
 Confidentiality Notice: The document(s) contained herein are confidential and privileged information, intended for the exclusive use of the individual or entity named above.

SURVEY FORM

CENTRAL ENVIRONMENTAL, INC.

229 E Whitney Rd, Ste 200, Anchorage, Alaska 99501

Page 1 of 1

PROJECT NAME: Skagway Ore Loader

PROJECT NUMBER: 14480

Sample Number	Sample Type	Homo Zone #	Sample Description	Sample Location	Total Qty
14480 - BK 02	TSI MS Misc		Beige cardboard/paper from light fixture.	Skagway, AK	1
	TSI MS Misc				
	TSI MS Misc				
	TSI MS Misc				
	TSI MS Misc				
	TSI MS Misc				
	TSI MS Misc				
	TSI MS Misc				
	TSI MS Misc				
	TSI MS Misc				

0232657
Atlas Anchorage Laboratory

Inspector's Signature 

Date 10/23/23

PCO 026 - Field Order 004
Steel Plate Procurement

KPFF directed PPM to Procure a 4' x 8' x 1" steel plate for field fabrication of stiffener plates for dolphin cap if necessary. Procurement direction given to minimize potential project schedule impact during dolphin cap installation as a result of MoS purchased piling skew within fabrication tolerance, but potentially impacting cap installation tolerances.

KPFF recommends \$1,740.28 for approval

Ore Peninsula Redevelopment Project

OWNER: Municipality of Skagway
DESC: FO 04 - Steel Plate Procurement

COST SUMMARY

DESCRIPTION OF WORK	COST TYPE	QUANT.	UNITS	UNIT RATE	LABOR (LAB)	SUPPLIES (SUP)	PPM EQUIP (PPM)	RENT EQUIP (RENT)	SUBCONT (SUB)	PERM MAT'L (PM)
<u>Pacific Pile & Marine</u>										
Procuring, Receiving, and Loading Material onto PPM Barge	LAB	1.0	LS	\$400.00	\$400					
4'x8'x3/4"t A572-50 Steel Plate	PM	1.0	LS	\$1,148.23						\$1,148

Procured a 4'x8'x3/4" A572-50 steel plate to use as potential stiffener material to reinforce the Dolphin 1 cap to mitigate the Pile #2 pile straightness issue outlined in RFI 084.

Costs in Field Order 04 are limited to the procurement and loading of new material on a PPM supplied material barge. Any costs for field installation directed by MOS will be tracked and forwarded in a separate PCO.

	LABOR	SUPPLIES	PPM EQUIP	RENT EQUIP	SUBS	PERM MATERIAL
SUBTOTALS:	\$400.00	\$0.00	\$0.00	\$0.00	\$0.00	\$1,148.23
Taxes @: 0.00%						
OH and Fee 15.0%			10.0%		10.0%	10.0%
Markup Totals	\$60.00	\$0.00	\$0.00	\$0.00	\$0.00	\$114.82
ITEM TOTALS	\$460.00	\$0.00	\$0.00	\$0.00	\$0.00	\$1,263.05

TOTAL AMOUNT	\$1,723.05
<u>Bond</u>	<u>1.0%</u> \$17.23
SUBTOTAL	\$1,740.28
GRAND TOTAL	\$1,740.28



Seaport Steel & Oregon Metal Services

Varsteel Family of Companies
 3660 E. Marginal Way S.
 Seattle, WA 98134
 Phone: 206-343-0700
 Fax: 206-343-1366
 Website: www.seaportsteel.com or
 www.oregonmetal.com

Invoice No: 354496

Bill To: PACIFIC PILE AND MARINE LP
 700 S. RIVERSIDE
 SEATTLE, WA 98108

Ship To: PACIFIC PILE & MARINE LP
 700 S. RIVERSIDE
 SEATTLE, WA 98108

Customer P.O.#: 31608

Sales Order No: 326406

Invoice Date: 1/11/24

Contract:

F.O.B.: Destination

Ship Via: Our Truck

Sales 1: Miranda Henrich

Sales 2: Sam Paulsen

Terms: Net 30

Ship Date: 1/11/24

Messages

RECEIVING HRS 7AM-330PM MON-THURS CALL ON
 FRI

- * PO# REQUIRED ON ALL INVOICES
- * FORMAL PO DOCUMENT MUST BE ISSUED PRIOR TO ALLOWING CHARGES ON ACCOUNT
- * JOB SITE CONTACT AND NUMBER REQUIRED FOR ALL JOB SITE DELIVERIES

BO Qty	Qty Shipped	UM	Description	Width	Length	Weight	Price	UM	Extension	Tax
----- BOL No: 339895 -----										
0	1	P	3/4 Plate A572-50 A572	48"	96"	980.10	1,145.00	E	\$1,145.00	E
0	1		Fuel Surcharge					A	\$3.23	E
						Total Weight	980.10			
									Subtotal Non taxable	\$1,148.23
									Subtotal taxable	\$0.00
									Total	\$1,148.23

Please remit all payments to: Seaport Steel, P.O. Box 3625, Seattle, WA 98124

Ross Hunnicutt

From: Shane Hautanen <shaneh@pacificpile.com>
Sent: Tuesday, December 5, 2023 5:34 PM
To: Patrick Young; Ed DeBroeck; Nicole Egli
Cc: Cameron Martin; Ross Hunnicutt; Bob Riley; Brad Ryan; Dan Westby; Chris Lundfelt; Zach Wallace
Subject: RE: Pile #2 Straightness
Attachments: QuoteForm548132.PDF

Patrick,

Please see attached quote for the ¾" plate.

I quoted a standard sized sheet for this (4'x8') which gets us down to only a 4-day lead time to Seattle. This also provides some spare material in case we need to make similar modifications to other dolphins.

Please issue a field order if you would like to proceed.

We can wait to install the pile and see if this is necessary, but cannot guarantee that this will not result in schedule impacts.

Thanks

--

Shane Hautanen | Pacific Pile & Marine

Project Engineer

T 907.276.3873 | F 206.774.5958 | C 907.231.1915

235 F St. Anchorage, AK 99501

www.pacificpile.com | Safety Centered, Performance Driven



From: Shane Hautanen

Sent: Monday, November 27, 2023 3:13 PM

To: Patrick Young <patrick.young@kpff.com>; Ed DeBroeck <ed.debroeck@kpff.com>; Nicole Egli <nicolee@pacificpile.com>

Cc: Cameron Martin <cameronm@pacificpile.com>; Ross Hunnicutt <ross.hunnicutt@kpff.com>; Bob Riley <bob.riley@kpff.com>; Brad Ryan <manager@skagway.org>; Dan Westby <danw@pacificpile.com>; Chris Lundfelt <chrisl@pacificpile.com>; Zach Wallace <zachw@pacificpile.com>

Subject: RE: Pile #2 Straightness

Thanks Patrick – we'll get some quotes and follow-up

--

Shane Hautanen | Pacific Pile & Marine

Project Engineer

T 907.276.3873 | F 206.774.5958 | C 907.231.1915

235 F St. Anchorage, AK 99501

www.pacificpile.com | Safety Centered, Performance Driven



From: Patrick Young <patrick.young@kpff.com>
Sent: Monday, November 27, 2023 3:02 PM
To: Shane Hautanen <shaneh@pacificpile.com>; Ed DeBroeck <ed.debroeck@kpff.com>; Nicole Egli <nicolee@pacificpile.com>
Cc: Cameron Martin <cameronm@pacificpile.com>; Ross Hunnicutt <ross.hunnicutt@kpff.com>; Bob Riley <bob.riley@kpff.com>; Brad Ryan <manager@skagway.org>; Dan Westby <danw@pacificpile.com>; Chris Lundfelt <chrisl@pacificpile.com>; Zach Wallace <zachw@pacificpile.com>
Subject: RE: Pile #2 Straightness

Shane,

One of our engineers ran out an analysis looking at a potential additional stiffener for dolphin 1 due to the issue from pile 2. I've attached a PDF showing a 21.5"x40"x3/4" PL that could be added in one of the highest stress concentration spots if we end up seeing the deviation from plumb discussed below.

Let me know if you need anything else from us or have questions on this.

Thanks,

 **Patrick Young, EIT** (*he/him*)
Design Engineer, Structural
M 509.654.0329 O 206.382.0600
1601 Fifth Avenue, Suite 1300
Seattle, WA 98101

From: Shane Hautanen <shaneh@pacificpile.com>
Sent: Monday, November 27, 2023 3:34 PM
To: Ed DeBroeck <ed.debroeck@kpff.com>; Nicole Egli <nicolee@pacificpile.com>
Cc: Cameron Martin <cameronm@pacificpile.com>; Ross Hunnicutt <ross.hunnicutt@kpff.com>; Patrick Young <patrick.young@kpff.com>; Bob Riley <bob.riley@kpff.com>; Brad Ryan <manager@skagway.org>; Dan Westby <danw@pacificpile.com>; Chris Lundfelt <chrisl@pacificpile.com>; Zach Wallace <zachw@pacificpile.com>
Subject: RE: Pile #2 Straightness

Hi Ed,

Just following up on this one – are you guys close on a design for additional stiffeners?
We still have some time, but would like to start getting quotes to see if this makes sense as a project contingency.

Thanks

--

Shane Hautanen | Pacific Pile & Marine
Project Engineer

T 907.276.3873 | F 206.774.5958 | C 907.231.1915
235 F St. Anchorage, AK 99501



From: Ed DeBroeck <ed.debroeck@kpff.com>
Sent: Saturday, November 4, 2023 7:26 AM
To: Nicole Egli <nicolee@pacificpile.com>
Cc: Cameron Martin <cameronm@pacificpile.com>; Ross Hunnicutt <ross.hunnicutt@kpff.com>; Patrick Young <patrick.young@kpff.com>; Shane Hautanen <shaneh@pacificpile.com>; Bob Riley <bob.riley@kpff.com>; Brad Ryan <manager@skagway.org>; Dan Westby <danw@pacificpile.com>; Chris Lundfelt <chrisl@pacificpile.com>
Subject: Re: Pile #2 Straightness

Yes we can definitely come up with something with additional stiffeners pretty easily and model out everything. To see what we might need. Those caps are coated not hdg, so that should make it easier

Get [Outlook for Android](#)

From: Nicole Egli <nicolee@pacificpile.com>
Sent: Friday, November 3, 2023 7:20:24 PM
To: Ed DeBroeck <ed.debroeck@kpff.com>
Cc: Cameron Martin <cameronm@pacificpile.com>; Ross Hunnicutt <ross.hunnicutt@kpff.com>; Patrick Young <patrick.young@kpff.com>; Shane Hautanen <shaneh@pacificpile.com>; Bob Riley <bob.riley@kpff.com>; Brad Ryan <manager@skagway.org>; Dan Westby <danw@pacificpile.com>; Chris Lundfelt <chrisl@pacificpile.com>
Subject: RE: Pile #2 Straightness

Hi Ed,

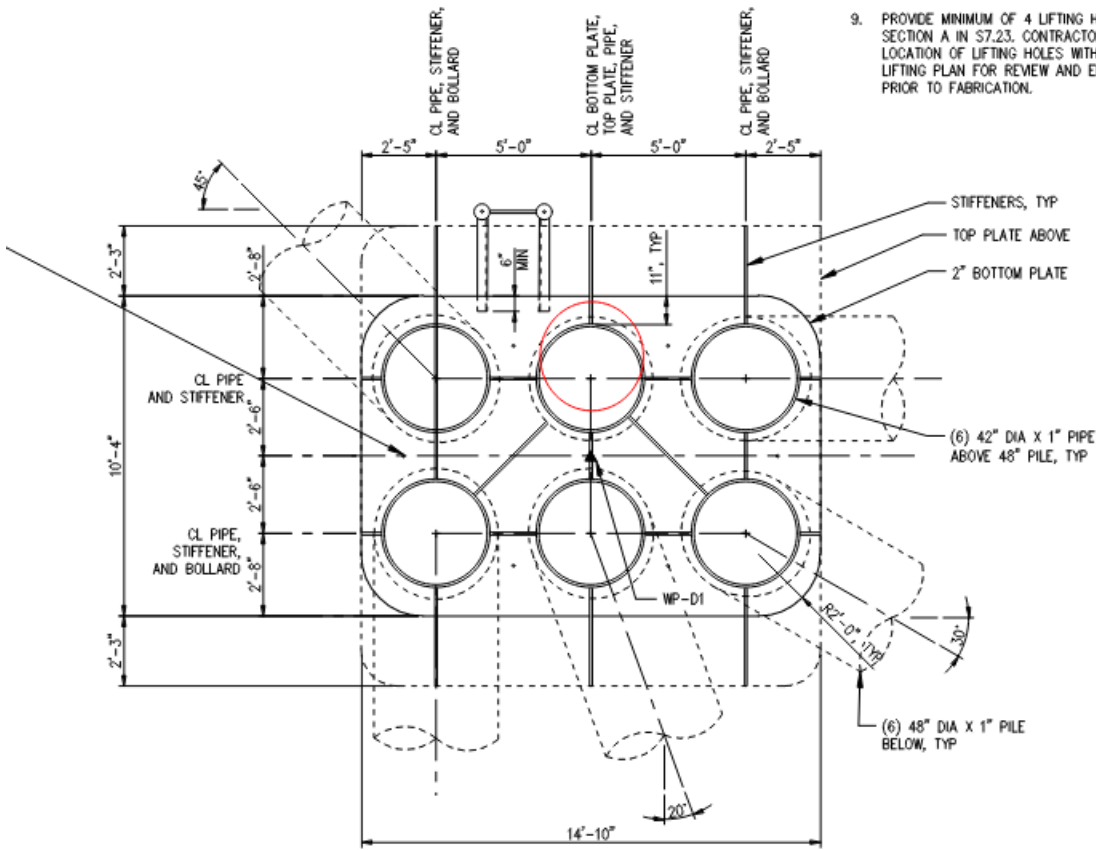
We believe if you send the pile back to Nucor you will be guaranteed to have further delay to the contract schedule if you plan to have the pile barge wait for completion of these pile.
As the pile is 7" out of skew, potentially the worst case this pile is off location on the bottom of the Dolphin 1 cap is 7" + 3" construction driving tolerance = 10". Looking at the Dolphin 1 cap design, is it possible that KPFF can design an acceptable field fix by modifying/adding stiffeners around this pile #2 under the cap?

We could order additional stiffeners at some determined size that are also HDG. Cut to fit stiffeners, field weld, and hot stick galvanize outside edges of added stiffener plates.

Pile 2 shown 10" in one direction on dwg S7.00 Dolphin 1 cap:

PIPES, UNO.

- 9. PROVIDE MINIMUM OF 4 LIFTING HOLES AS SHOWN SECTION A IN S7.23. CONTRACTOR SHALL COORDINATE LOCATION OF LIFTING HOLES WITH FABRICATOR. SEE LIFTING PLAN FOR REVIEW AND ENGINEER APPROVAL PRIOR TO FABRICATION.



--

Nicole Egli | Pacific Pile & Marine
 Project Manager

C 206.640.6578
 700 S. Riverside Drive, Seattle, WA 98108
www.pacificpile.com | Safety Centered, Performance Driven



From: Ed DeBroeck <ed.debroeck@kpff.com>
Sent: Friday, November 3, 2023 4:03 PM
To: Nicole Egli <nicolee@pacificpile.com>; Dan Westby <danw@pacificpile.com>; Chris Lundfelt <chrsl@pacificpile.com>
Cc: Cameron Martin <cameronm@pacificpile.com>; Ross Hunnicutt <ross.hunnicutt@kpff.com>; Patrick Young <patrick.young@kpff.com>; Shane Hautanen <shaneh@pacificpile.com>; Bob Riley <bob.riley@kpff.com>; Brad Ryan <manager@skagway.org>
Subject: Pile #2 Straightness

Chirs/All,
 As I just discussed with Chris,

On Wednesday I went and took some measurements of pile #2 up at Jeff's yard. We did the best we could with a string line and tape measure to look at the straightness issue.

I talked about this pile with Cameron on Wednesday evening and responded to RFI 084 with more detail of our measurements, attached is our sketch and here is the link to the RFI: [084 - Owner Supplied Pile Out of Roundness](#). I told Cameron to let us know right away if there are any other piles that are giving them issue so we can decide quickly if we send it back to Nucor or what the next action might be. I also put that in our RFI response.

If our/Donavan's measurements are accurate this pile could be about 7" out of plum between the dam plate 75' from the end and the end of the pile. Donovan took measurements today now that it is off the splice bed to confirm it was being manipulated at all by the rollers. Attached is our cad-up of the measurements Donovan took today. I also asked Nucor to send up their people to take a look. Our Pile spec lists straightness as +/- 1% over the length. That would give us up to 9" of out of straightness along 75'.

Pile #2 is on Dolphin #1. This pile is driven about 80' into the soil, about 5' past where the dam plate hits the mudline. I can make myself available anytime tomorrow to talk about this more.

Unfortunately, this pile was spliced to it's a joining piece before we knew about this issue, so if we need to send it to Nucor we will have to cut it before we can ship it to Nucor to have them fix it. All of this has potential cost and schedule implications that we can work through, right now I want to make sure we are setup for success when we are getting this into the ground.

Thanks,



Ed DeBroeck, PE, DBIA

Associate

[O 206.382.0600](tel:206.382.0600) [M 425.501.6968](tel:425.501.6968) | Ed.DeBroeck@kpff.com

1601 Fifth Avenue | Suite 1300 | Seattle, WA 98101