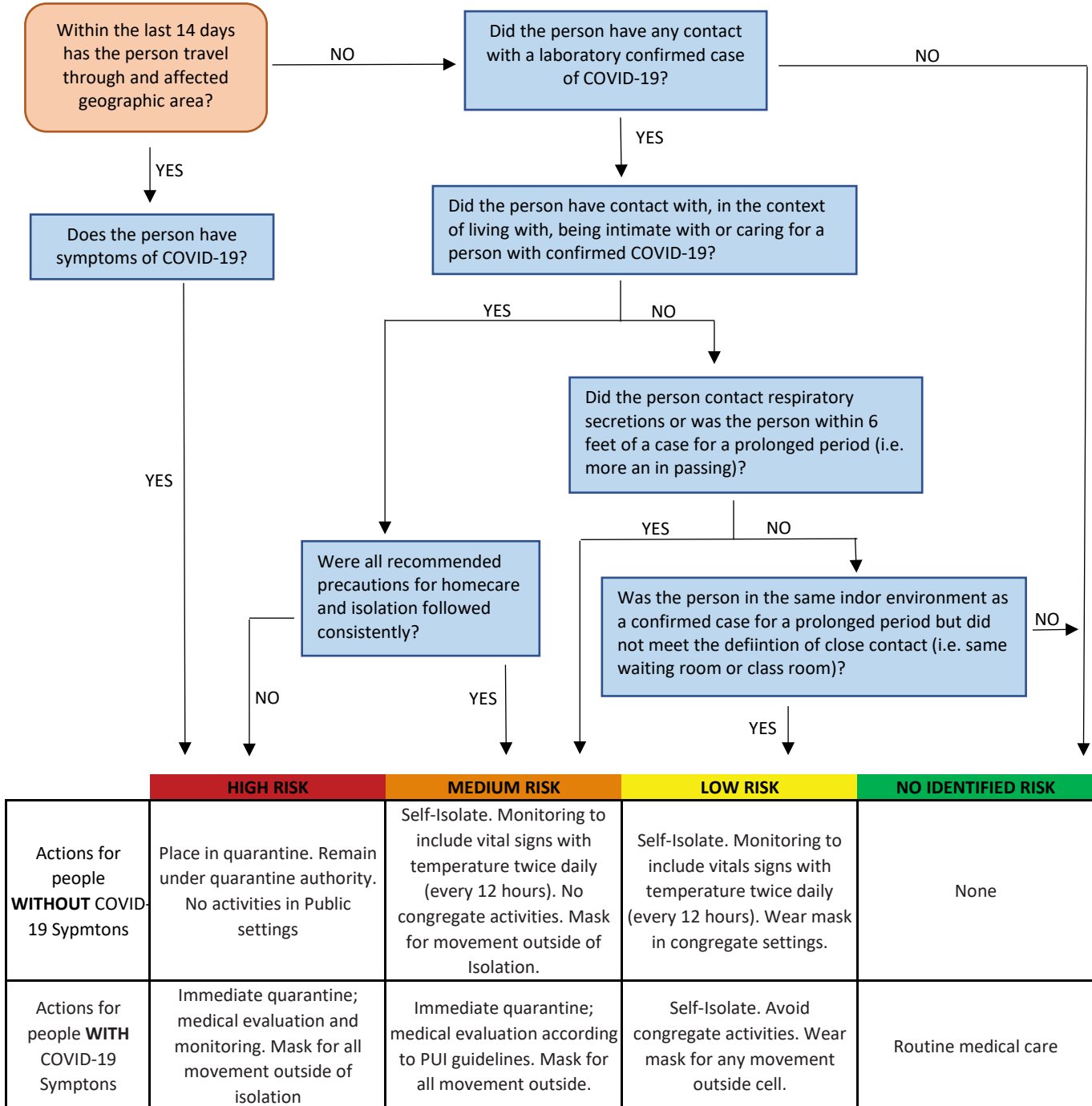




# COVID-19 Risk Assessment & Management of Suspected Cases

This algorithm should not replace clinical judgement when determining the course of action for a given case.



**Notes:**

Report all suspected cases of COVID-19 to the on-call Provider.

Examples may not cover all potential exposures to COVID-19. This algorithm should not replace clinical judgement when determining the course of action for a given case.

Unless otherwise specified, isolation or quarantine should be maintained for the duration of the incubation period (14 days).