

SKAGWAY PORT MASTER PLAN

Updated Design Concepts for Skagway's Waterfront

APRIL MASTER PLAN PRESENTATION



HOUSEKEEPING

- Please keep microphones muted during the presentation 

- Please hold questions until the discussion period at the end 

- This meeting is being recorded for those who couldn't attend today 

- Thank you for your participation! 

INTRODUCTION

Port Master Planning Goals

Project Timeline

Elements of the Plan

Project Area | Existing Land Use

PORT MASTER PLANNING GOALS

01

ADDRESS THE IMPACTS OF
COVID-19 THROUGH URBAN
PLANNING & ENGINEERING
DESIGN



02

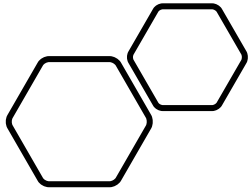
DEVELOP CONCEPTS FOR FUTURE
WATERFRONT



03

ENGAGE THE PUBLIC +
STAKEHOLDERS IN THE
PLANNING PROCESS





TIMELINE

- 200+ virtual attendees at the February presentation
- 52+ pages of emailed letters and comments to PortofSkagway@Skagway.org email address

★ WE ARE HERE



Initial outreach

Oct.-Nov.
2020

Refine concepts

Dec. 2020-
Jan. 2021

Integrate Feedback &
Update concepts

Feb.-Mar.
2021

Final Public Event
Develop Draft Plan
Shoreline Park Phase 1
construction begins

Apr. 2021

Final Plan
Phase 1
construction
complete

June 30th,
2021

Sept.-Oct.
2021

Design charrette &
Interviews

Master Plan
Presentation

Phase 1 Shoreline
Park bids

Integrate
Feedback
Finalize Concepts,
Plan & Specs
Phase 2A
construction
begins

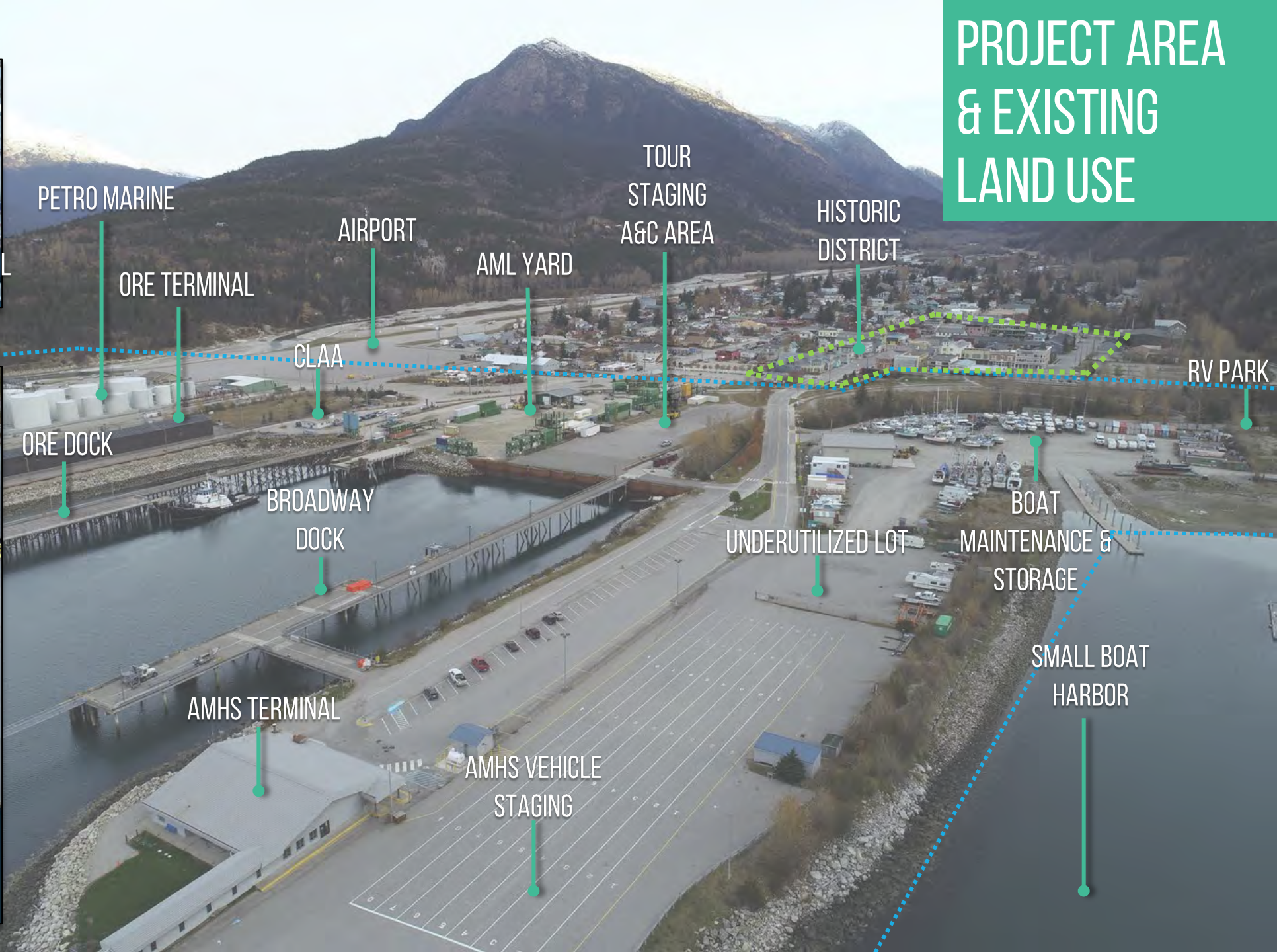
Phase 2A
construction
complete
Phase 2B
construction
begins

- 41 households attended the in-person charrette
- 75 participants viewed & commented on the online charrette
- 30 interviews were conducted with waterfront stakeholders

WHAT ELEMENTS ARE BEING EVALUATED?



PROJECT AREA & EXISTING LAND USE



FUTURE LAND USE

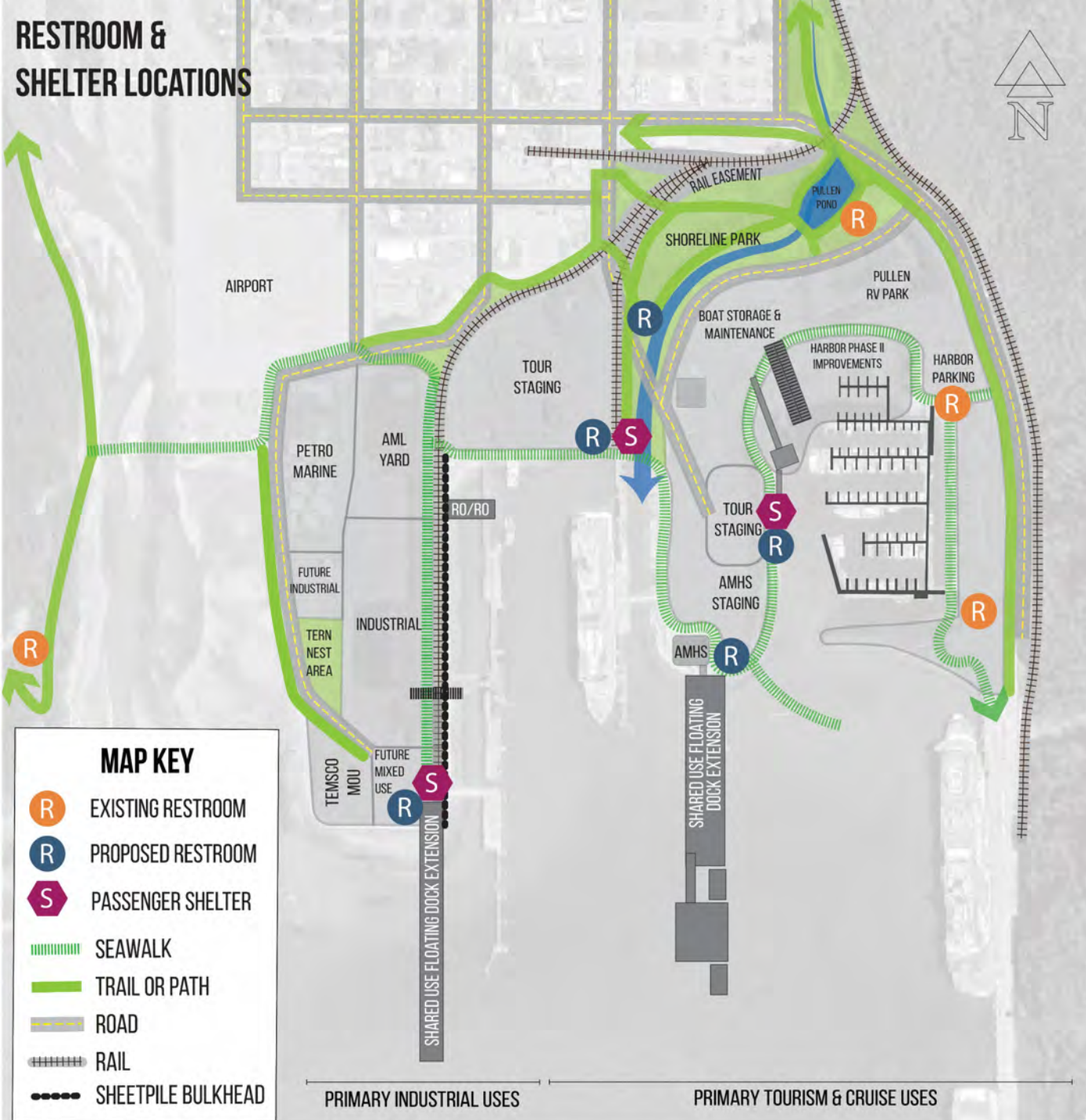


FUTURE LAND USE

HIGHLIGHTS:

- **GREATER SEPARATION OF USES**
 - Primary tourism & cruise uses east
 - Primary Industrial uses west
- **MAINTAINED USES**
 - Petro Marine
 - AML (at new site)
- **NEW USES**
 - Expanded tour parking, access & circulation areas
- **NEW DOCKS**
 - RO/RO facility
 - Ferry Peninsula AMHS/cruise shared use dock extension
 - ORE dock shared floating extension

RESTROOM & SHELTER LOCATIONS



MAP KEY

- R EXISTING RESTROOM
- R PROPOSED RESTROOM
- S PASSENGER SHELTER
- ||||| SEAWALK
- TRAIL OR PATH
- ROAD
- RAIL
- SHEETPILE BULKHEAD

RESTROOM & SHELTER LOCATIONS

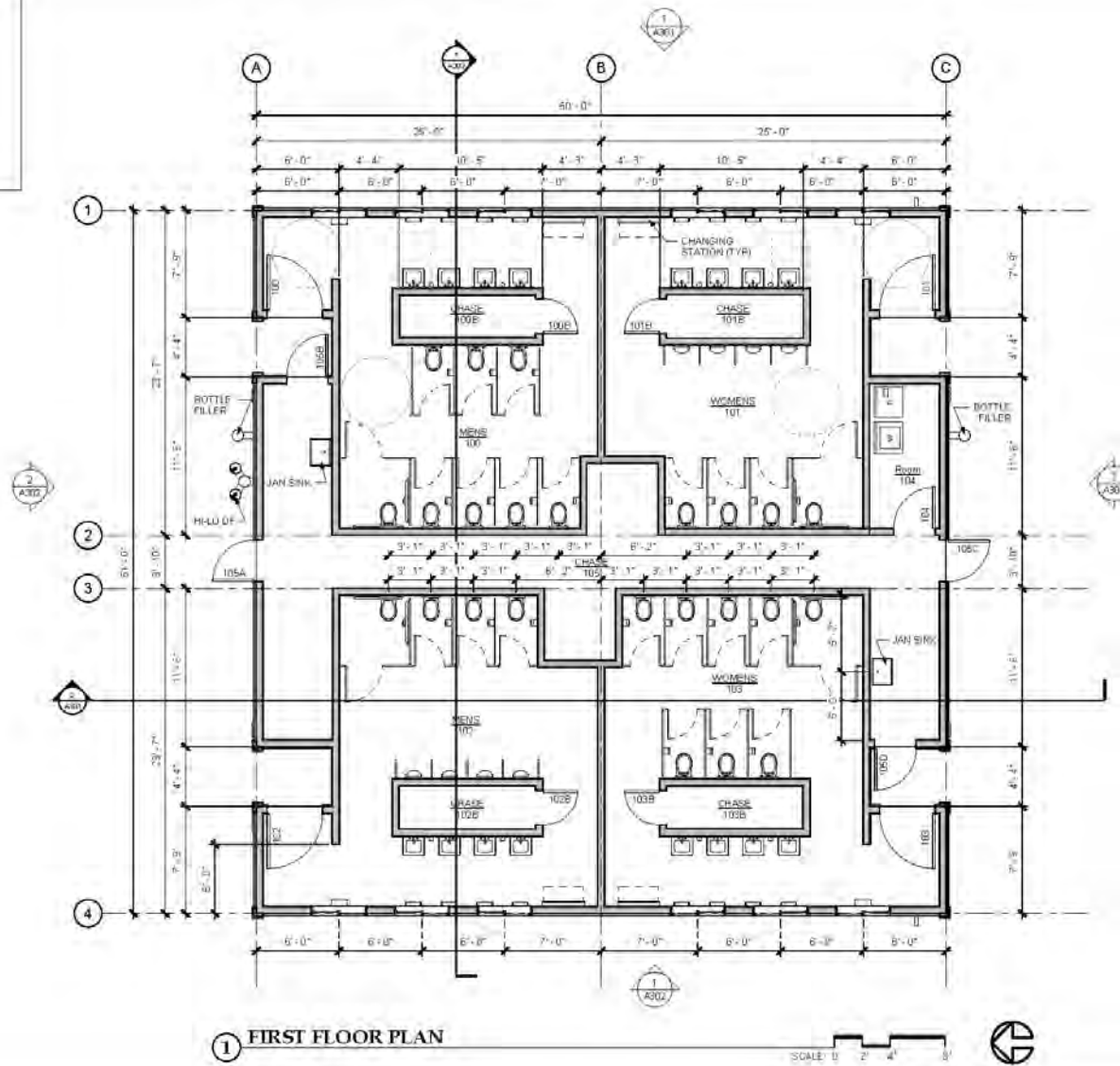
HIGHLIGHTS:

- Accessible restrooms at every dock
- New additional restroom in Shoreline Park (westside)
- New passenger waiting shelters at each dock with tour info stations & windbreaks

RESTROOM FACILITY CONCEPT

CODE SUMMARY

INTERNATIONAL BUILDING CODE	3B13
CONSTRUCTION TYPE	VII
OCCUPANCY TYPE	O
AREA CALCULATIONS	
ALLOWABLE AREA	5200 sf
ACTUAL AREA	2850 sf
HEIGHT CALCULATIONS	
ALLOWABLE HEIGHT	40 ft (4 STORIES)
ACTUAL HEIGHT	20ft 6 1/2 STORY



1 FIRST FLOOR PLAN



CONSULTANT:
Jensen Yorba Wall Inc.
 1000 W. 10th Street
 Anchorage, Alaska 99501
 907.562.2070

PDC ENGINEERS
 PLAN / DESIGN - CONSTRUCT
 1111 EAST BROADWAY
 ANCHORAGE, ALASKA 99501

PROJECT:
MUNICIPALITY OF SKAGWAY WATERFRONT RESTROOMS
 Skagway, Alaska

SHEET TITLE:
FLOOR PLAN
 SCHEMATIC DESIGN

DESIGNED	DATE
DRAWN	DATE
CHECKED	DATE
DATE	4-2-2021

PROJECT NO.
21020

SHEET NUMBER
A201

REVISIONS

HIGHLIGHTS:

- Flexible Floor Plan
- Allows for social distancing movements
- Layout allows for easy maintenance
- Standardized restroom design can be replicated

02/22/2023 11:21 AM C:\Users\jyorkba\OneDrive\Documents\Projects\2023\21020\21020-001.dwg Plot Date: 02/22/2023 11:21 AM If this bar does not measure exactly one inch, the scale of this drawing has been altered during its production. AFFECTING ALL DIMENSIONS



CONSULTANT: Jensen Yorba Wall Inc. 1234 Main Street Juneau, Alaska 99801 907.586.1234	
PROJECT: MUNICIPALITY OF SKAGWAY WATERFRONT RESTROOMS Skagway, Alaska	
SHEET TITLE: MODEL VIEW SCHEMATIC DESIGN	
DESIGN: ADL	DATE: 4-8-2021
DRAWN: ADL	PROJECT NO: 21020
CHECKED: WJ	SHEET NUMBER: A001
DATE: 4-8-2021	REVISIONS:

RESTROOM FACILITY CONCEPT

HIGHLIGHTS:

- Through collaboration with Skagway Traditional Council, building design integrates Native Alaskan art elements
- Standardized restroom design can be replicated



EXISTING TOUR
STAGING AREA



BROADWAY DOCK UPLAND EXISTING CONDITIONS

STAKEHOLDER FEEDBACK:

- TOUR OPERATIONS
 - Chaotic, cramped, & confusing
 - Passengers exposed to wind & weather
 - Pedestrian & vehicle conflicts
 - Need for improved SMART stop
 - Need to consider bus/train transfers



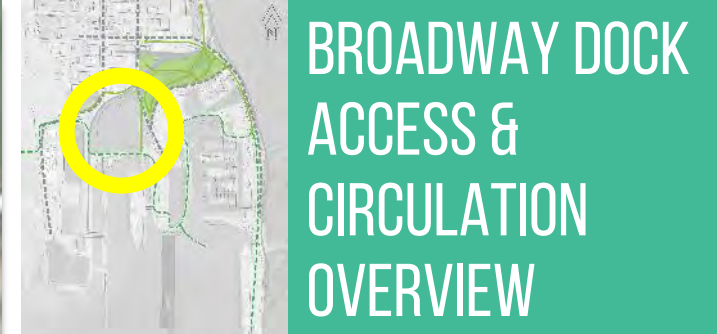
IMPROVED PEDESTRIAN
ROUTES

MARKED PASSENGER
LOADING ZONES

SEAWALK

RESTROOM

WAITING
SHELTER WITH
TOUR INFO
STATION



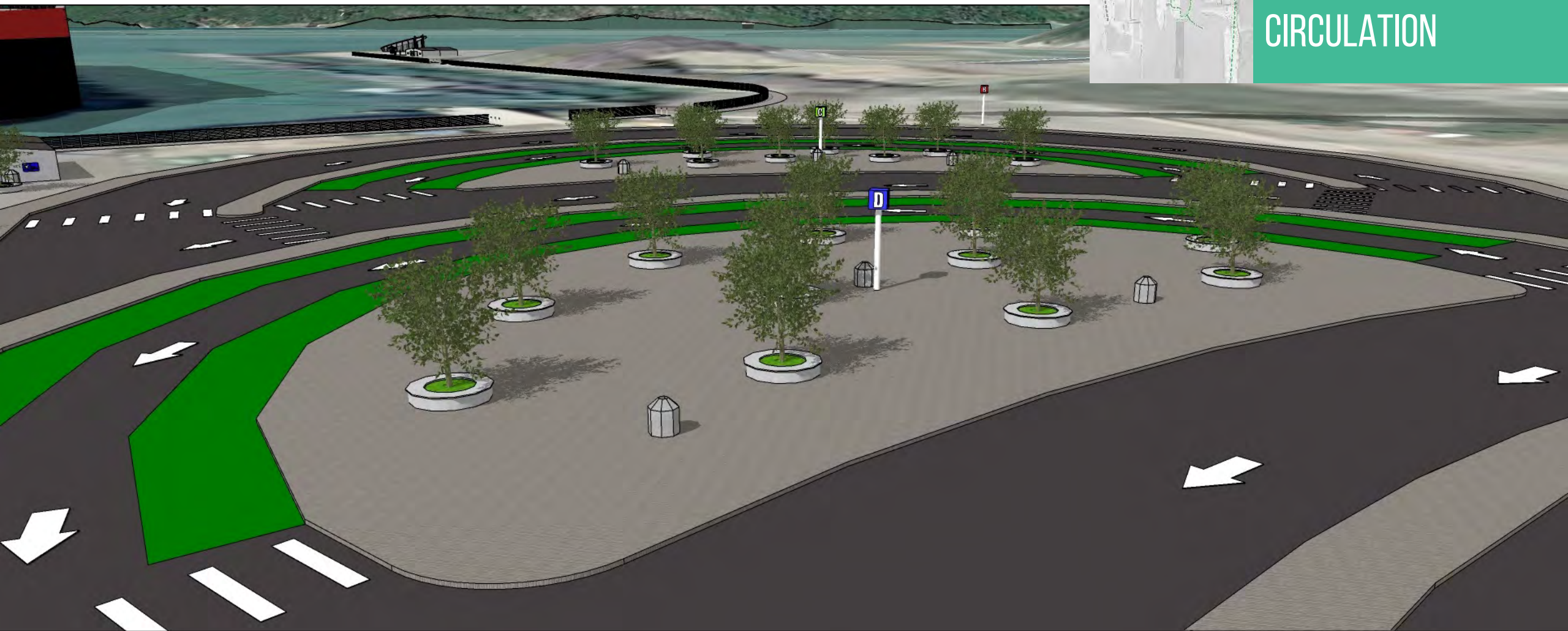
BROADWAY DOCK ACCESS & CIRCULATION OVERVIEW

HIGHLIGHTS:

- Vehicles do not need to back out
- Enter from State, exit onto Broadway
- Capacity for 2 large ships
- Designated motorcoach & small tour vehicle areas
- Improved turning movements
- Additional staging area to north
- Marked pedestrian routes
- Restrooms



BROADWAY DOCK ACCESS & CIRCULATION





BROADWAY DOCK ACCESS & CIRCULATION





VIEW LOOKING NORTHWEST FROM BROADWAY DOCK RAMP



CENTRAL PLAZA DETAIL LOOKING SOUTHEAST

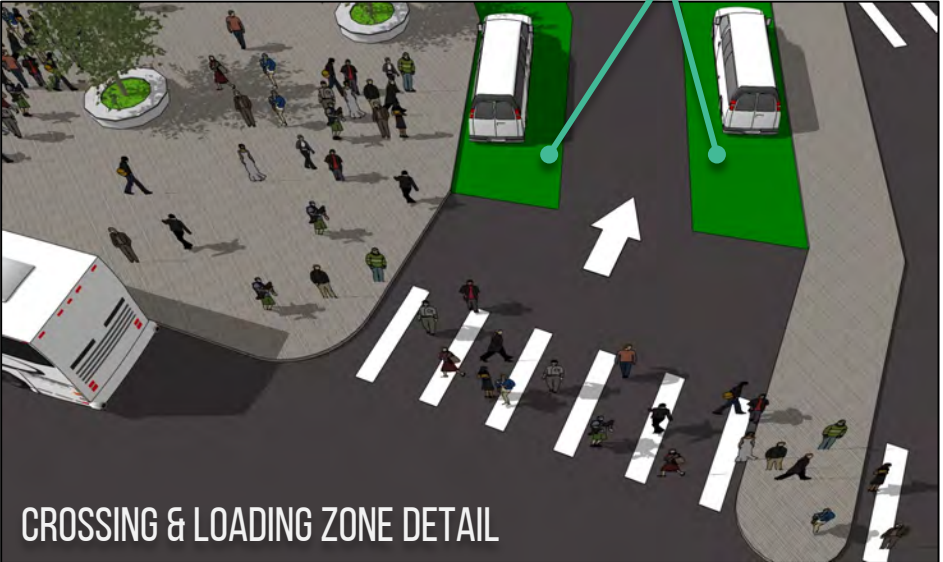


BROADWAY DOCK ACCESS & CIRCULATION DETAIL

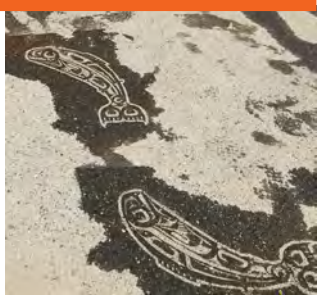
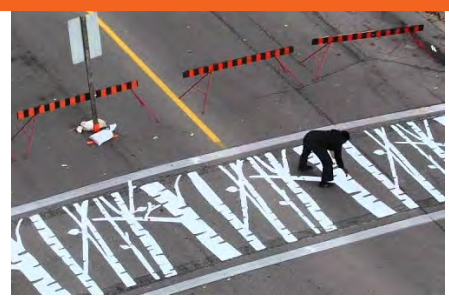
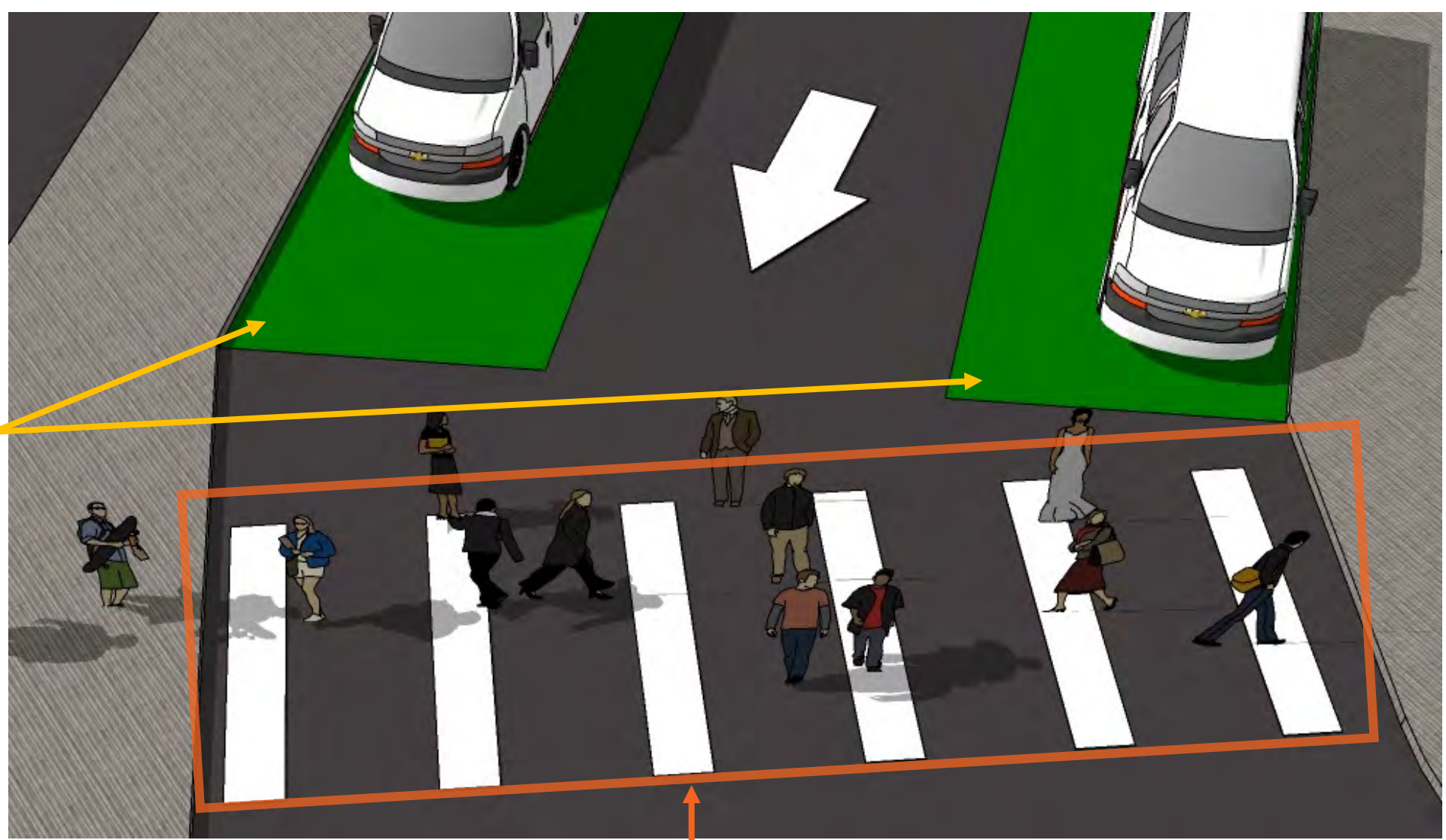
HIGHLIGHTS:

- Walled shelters with tour info stations
- 2 central plazas with seating, landscape trees, & trash receptacles
- Marked passenger loading zones

OPPORTUNITY FOR CREATIVE PAVEMENT
MARKINGS/NATIVE ART

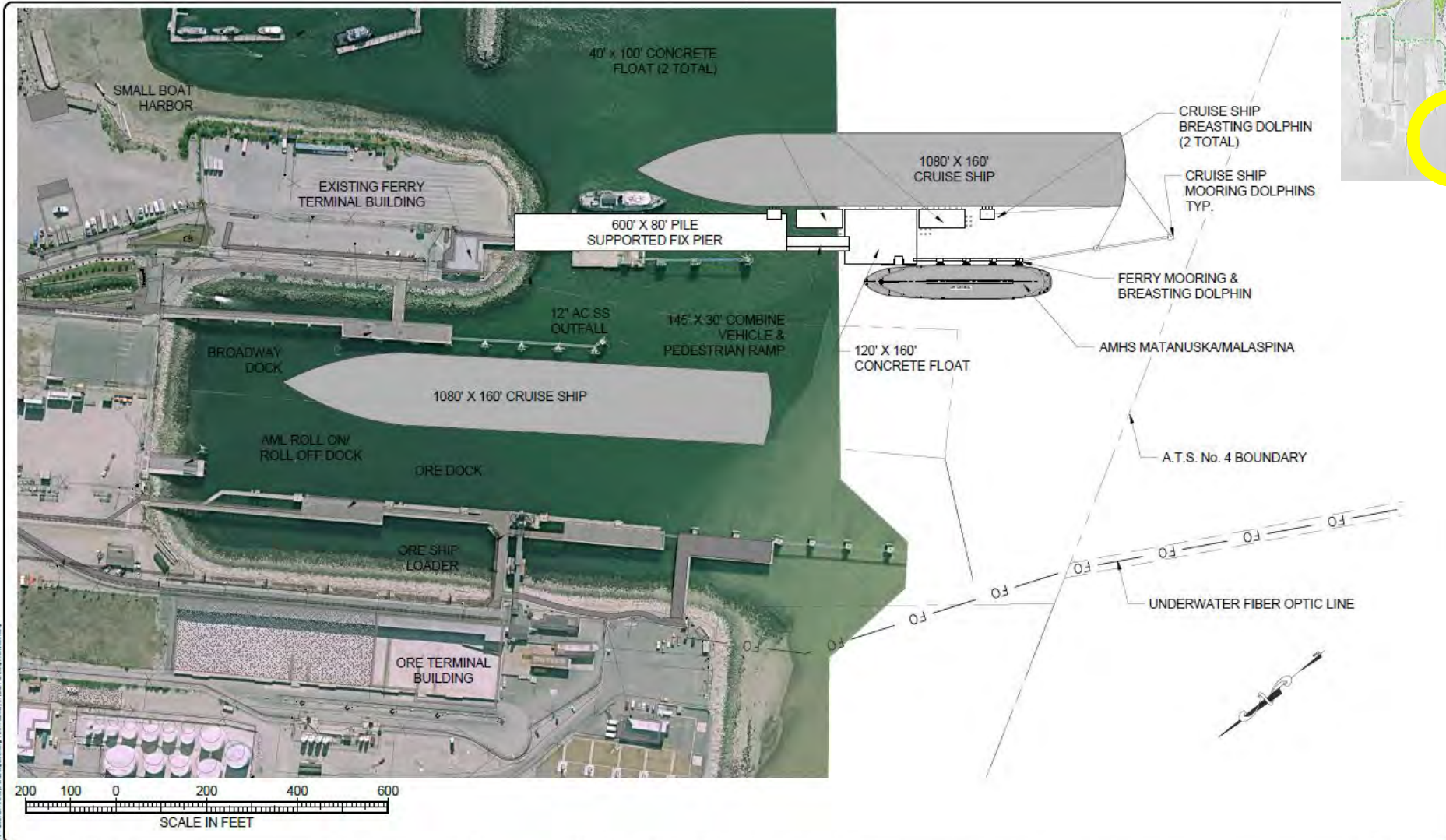


CROSSING & LOADING ZONE DETAIL



ARTISTIC
PAVEMENTS

FERRY PENINSULA SHARED USE DOCK EXTENSION



HIGHLIGHTS:

- AMHS/Cruise shared use
- Communicating with WPYR on options for rail access to Ferry Peninsula

C:\Users\jcamp\OneDrive\Documents\Projects\2021\20210114_Skagway\20210114_Skagway.dwg

DESIGN: JMP			
DRAWN: JMK			
CHECK: JMP			
APPROVED: JMP			
NO.	DATE	REVISION	BY



PDC ENGINEERS

PLAN • DESIGN • CONSTRUCT

4 B I F E R D O U B F A R T

2109 Nordenhoff Mall Rd. Ste. 4, Juneau, AK 99801

907.780.6060 | A E C C 6 0 3

CONCEPT FOR
AMHS/CRUISE SHIP DOCK EXTENSION

MUNICIPALITY OF SKAGWAY, ALASKA

DATE: JAN 07, 2021
DOC NO: 2021028
SHEET
2 of 2

FERRY PENINSULA UPLAND EXISTING CONDITIONS



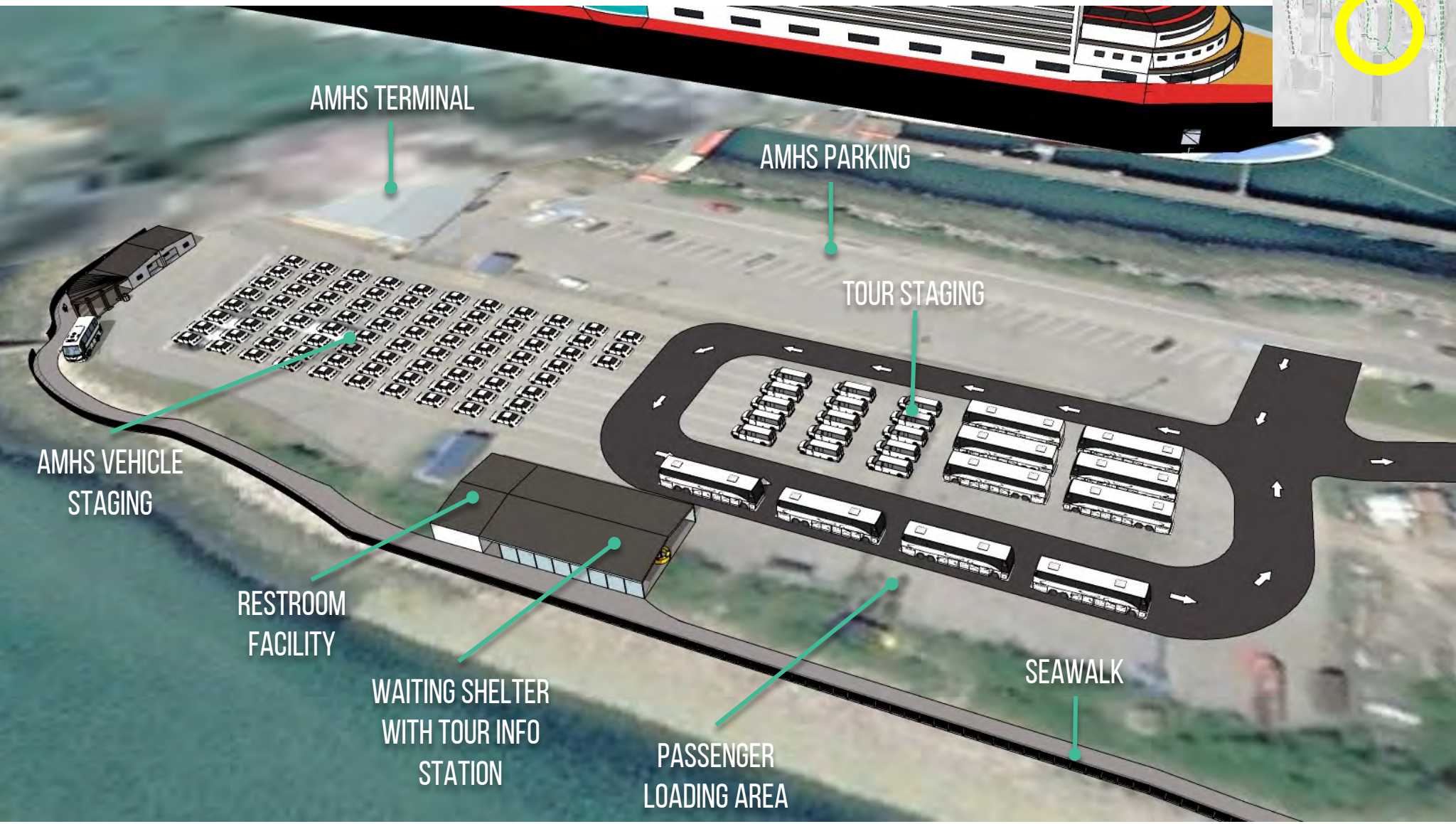
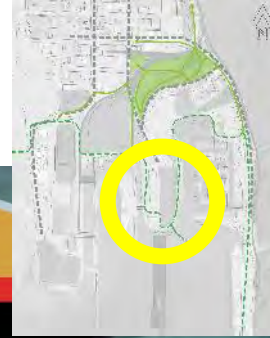
AMHS TERMINAL

AMHS PARKING

AMHS VEHICLE
STAGING

UNDERUTILIZED LOT

FERRY PENINSULA REVISED CONCEPT OVERVIEW



HIGHLIGHTS:

- AMHS/Cruise shared use
- Minimal AMHS & tour loading conflicts
- Passenger shelters & restroom facilities
- Seawalk for pedestrian traffic

CROSSING DETAIL



SIGNAGE, PAVEMENT
MARKINGS, &
BOLLARDS ALERT
PEDESTRIANS TO BOAT
LAUNCH ZONES

SEAWALK DESIGN OVERVIEW

HIGHLIGHTS:

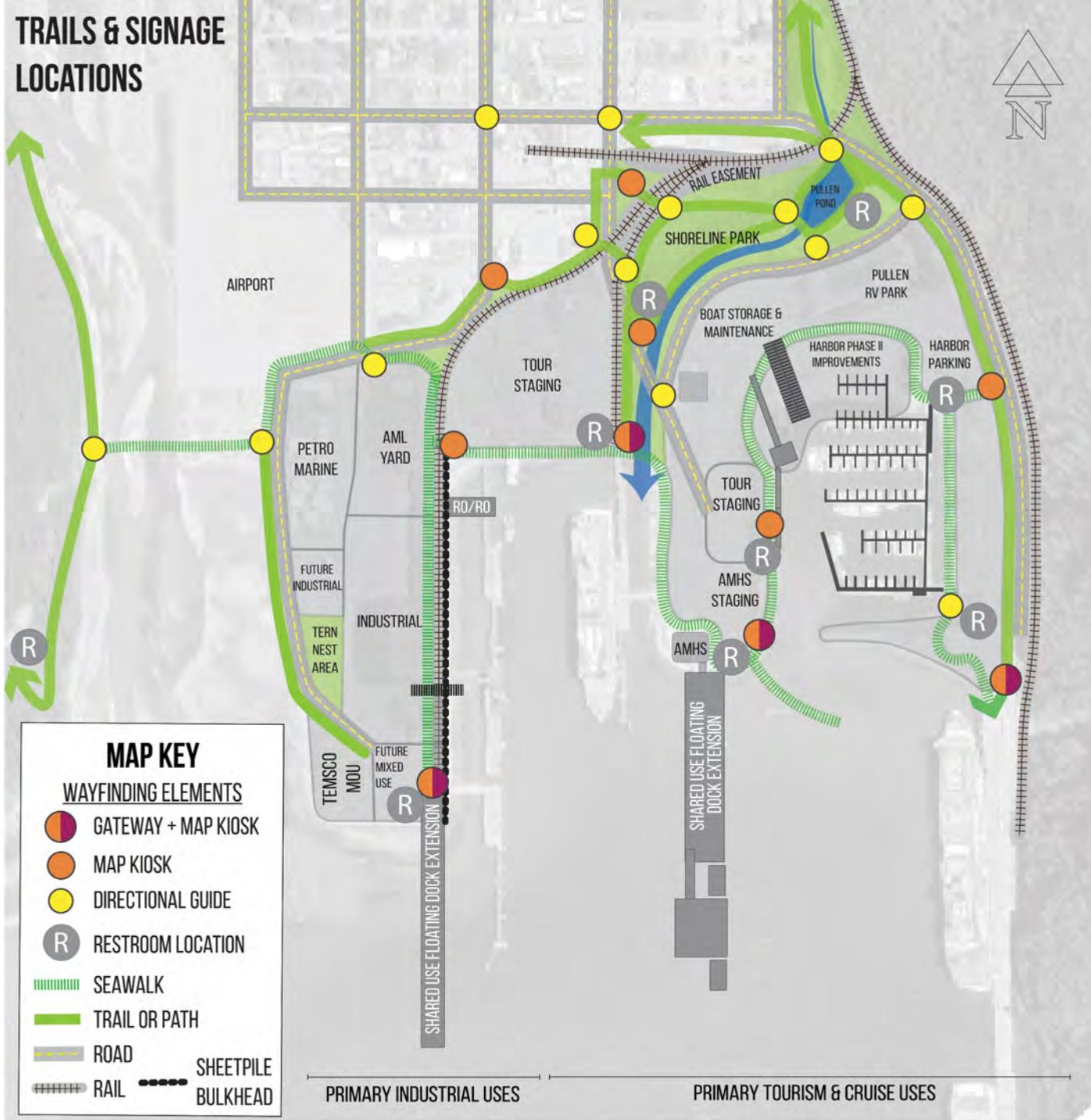
- Continuous Seawalk from Yakutania Point Trails to Railroad Dock



SEAWALK DETAIL



TRAILS & SIGNAGE LOCATIONS



MAP KIOSK



DIRECTIONAL GUIDE



DOCK GATEWAY SIGN



POTENTIAL SIGNAGE COLOR THEMES + MATERIALS

FERRY DOCK
"Emerald Sea Foam"



- Seafoam + emerald green tones
- Green painted wood + copper patina footings
- Maritime weathered grey support beams

BROADWAY DOCK
"Salmon Skin"



- Orange, red + copper tones
- Weathered corten steel footings
- Alaska yellow cedar support beams

ORE DOCK
"Dungeness Crab"



- Purple, Lavender + Copper tones
- Purple/ Grey slate footings
- Dark railroad tie support beams

RAILROAD DOCK
"Mountain Sky"



- Sky blues + sunrise orange tones
- Formline art on upper footing
- Weathered light wood support beams

OPTION 1:

Simple
Shapes & Colors



OPTION 2:

Symbols,
Shapes & Colors



OPTION 3:*

Native Formline,
Shapes & Colors



*Partner with a local Alaska Native artist to develop a formline figure representing each dock. Examples of formline:



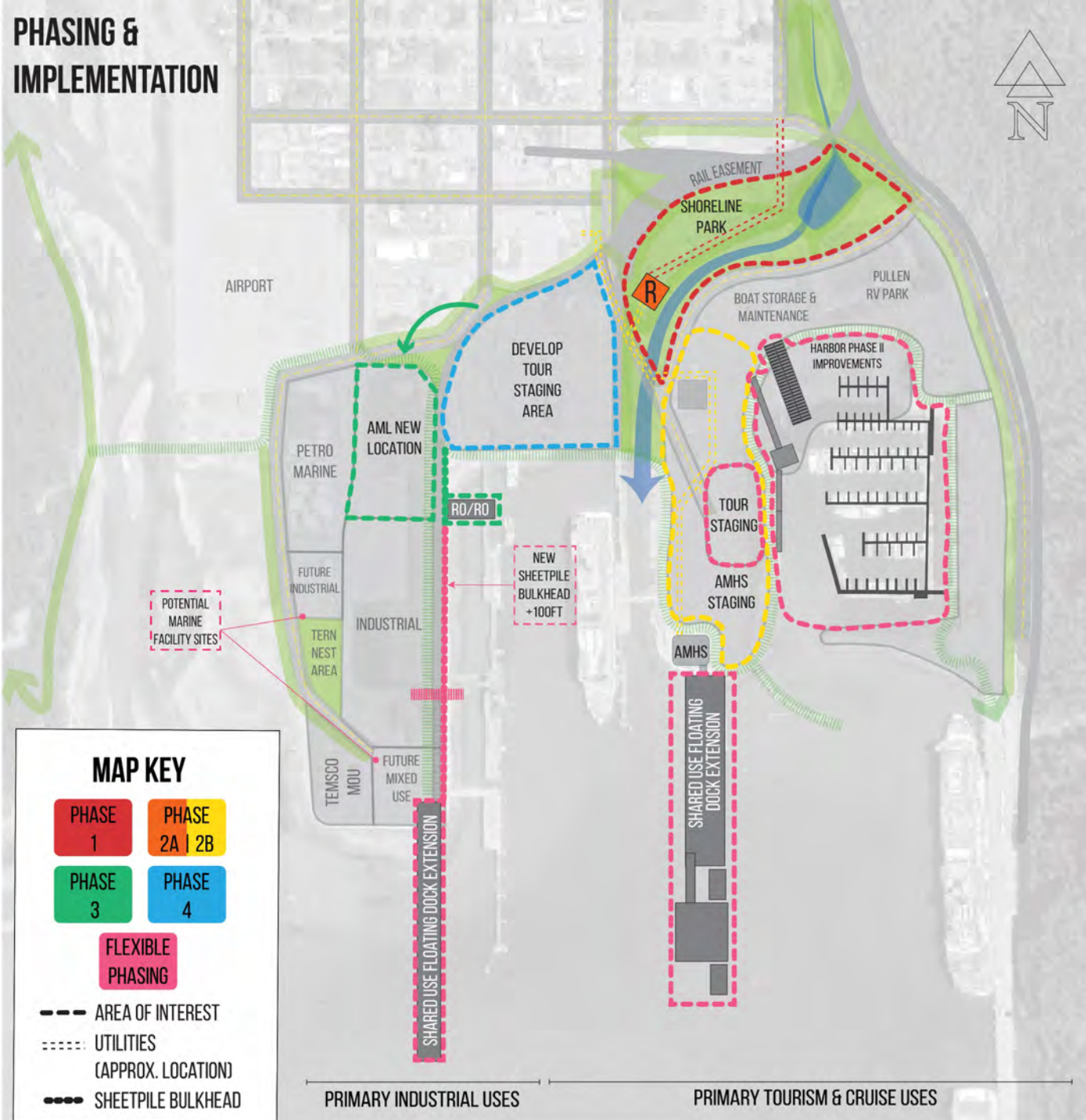
○ ————— Ferry Dock

○ ————— Broadway Dock

○ ————— Ore Dock

○ ————— Railroad Dock

PHASING & IMPLEMENTATION

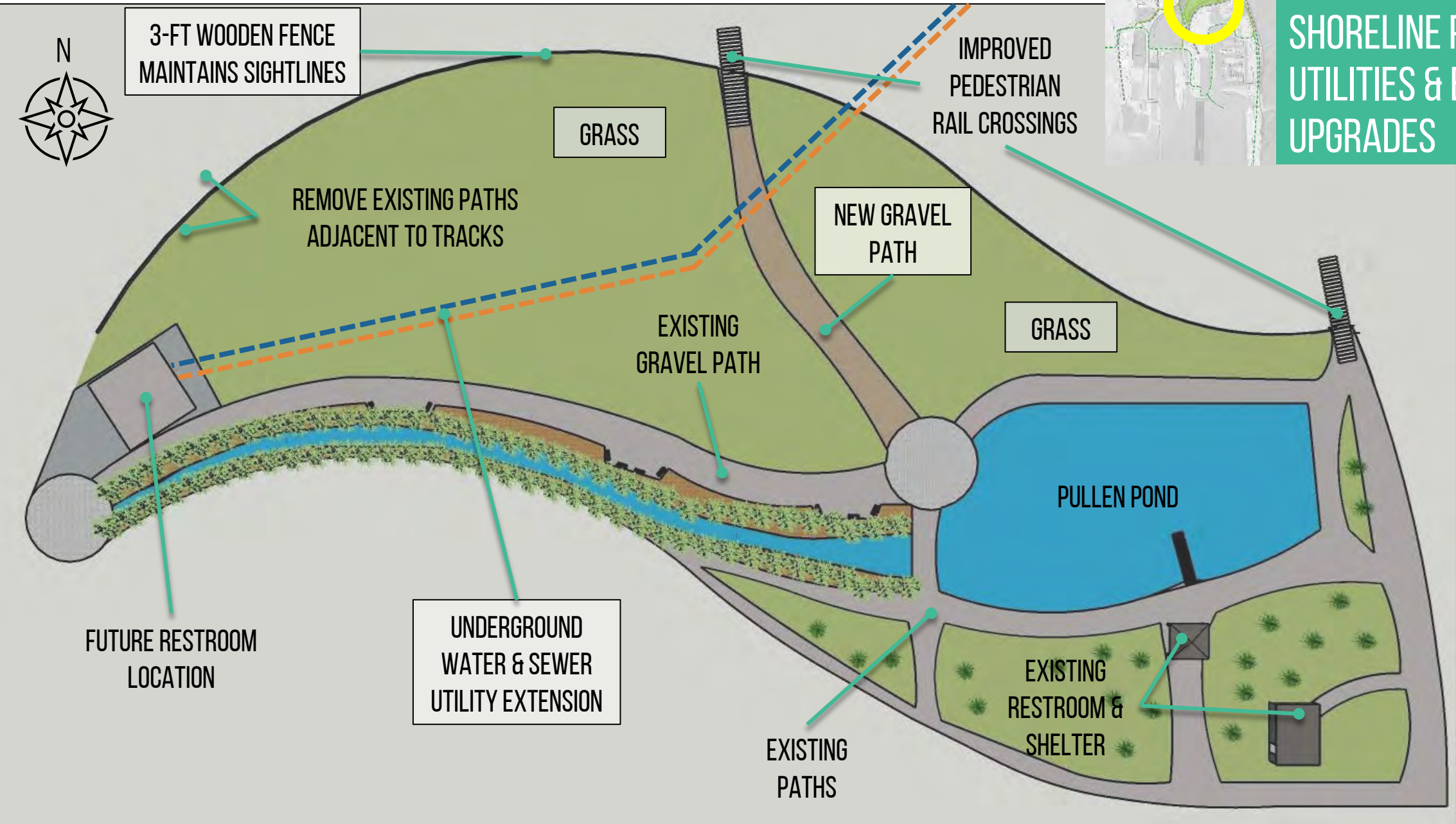


PROJECT PHASING

HIGHLIGHTS:

- **PHASE 1** (COVID relief grant):
 - Shoreline Park basic improvements
- **PHASE 2A & 2B** (GO bond):
 - **2A:** Shoreline Park west restroom
 - **2B:** Ferry peninsula & SBH utilities
- **PHASE 3:** AML move
- **PHASE 4:** Broadway tour staging area
- **FLEXIBLE PHASING:**
 - SBH Phase II Improvements
 - Dock upgrades & extensions
 - Ferry Tour Staging & upland improvements
 - Shoreline Park additional improvements

PHASE 1 – SHORELINE PARK UTILITIES & BASIC UPGRADES



3-FIT WOODEN FENCE
MAINTAINS SIGHTLINES

GRASS

IMPROVED
PEDESTRIAN
RAIL CROSSINGS

REMOVE EXISTING PATHS
ADJACENT TO TRACKS

NEW GRAVEL
PATH

GRASS

EXISTING
GRAVEL PATH

PULLEN POND

FUTURE RESTROOM
LOCATION

UNDERGROUND
WATER & SEWER
UTILITY EXTENSION

EXISTING
RESTROOM &
SHELTER

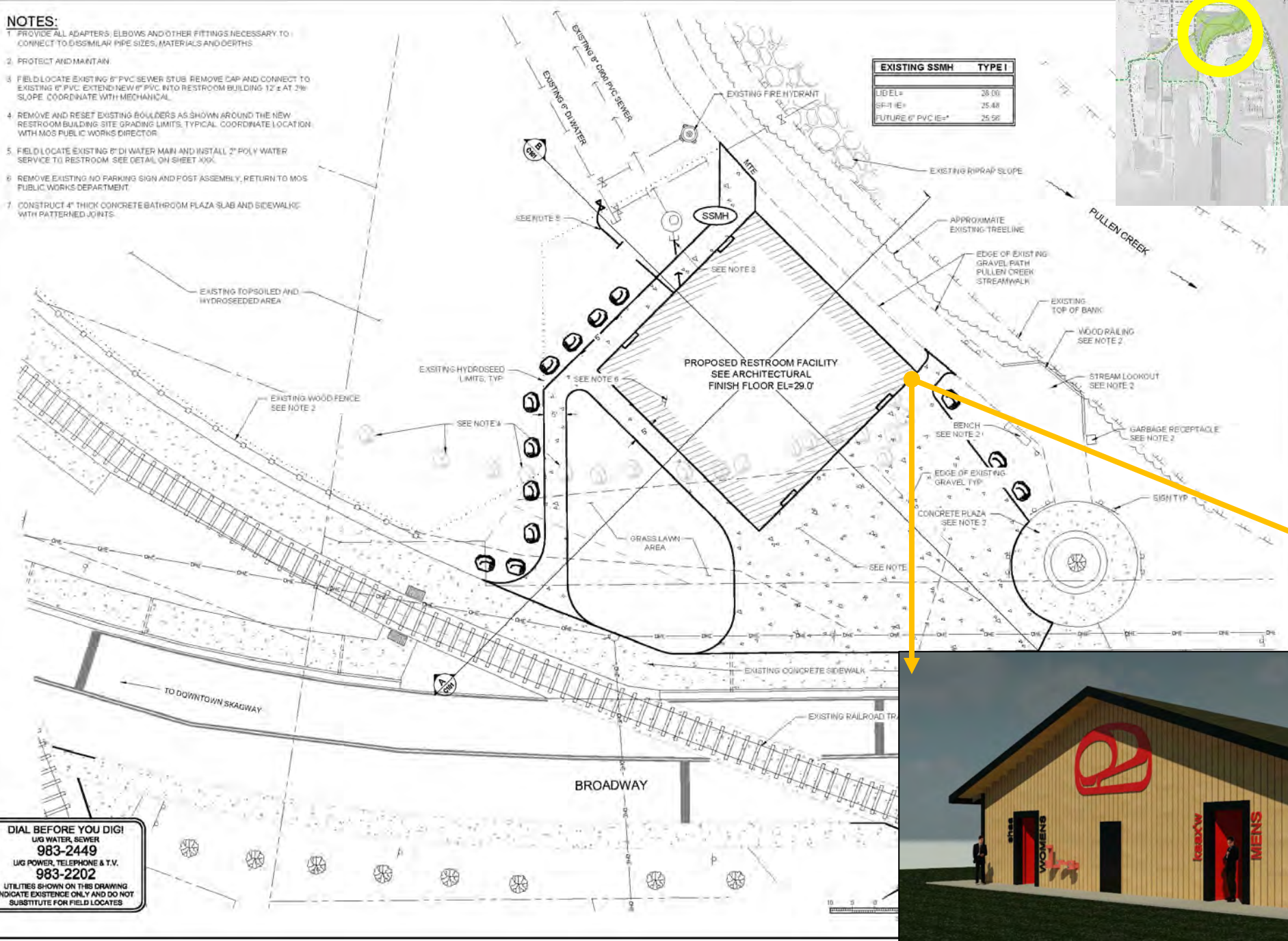
EXISTING
PATHS

IF THE BAR DOES NOT MEASURE EXACTLY ONE INCH, THE SCALE OF THIS DRAWING HAS BEEN ALTERED DURING IT'S PRODUCTION. AFFECTING ALL LABELED SCALES

NOTES:

1. PROVIDE ALL ADAPTERS, ELBOWS AND OTHER FITTINGS NECESSARY TO CONNECT TO DISSIMILAR PIPE SIZES, MATERIALS AND DEPTHS
2. PROTECT AND MAINTAIN
3. FIELD LOCATE EXISTING 6" PVC SEWER STUB. REMOVE CAP AND CONNECT TO EXISTING 6" PVC. EXTEND NEW 6" PVC INTO RESTROOM BUILDING 12' ± AT 3% SLOPE. COORDINATE WITH MECHANICAL
4. REMOVE AND RESET EXISTING BOULDERS AS SHOWN AROUND THE NEW RESTROOM BUILDING SITE GRADING LIMITS. TYPICAL. COORDINATE LOCATION WITH MOS PUBLIC WORKS DIRECTOR
5. FIELD LOCATE EXISTING 6" DI WATER MAIN AND INSTALL 2" POLY WATER SERVICE TO RESTROOM. SEE DETAIL ON SHEET XXX
6. REMOVE EXISTING NO PARKING SIGN AND POST ASSEMBLY, RETURN TO MOS PUBLIC WORKS DEPARTMENT
7. CONSTRUCT 4" THICK CONCRETE BATHROOM PLAZA SLAB AND SIDEWALK WITH PATTERNED JOINTS

EXISTING SSMH	TYPE I
LID EL=	28.00
SF-1 IE=	25.48
FUTURE 6" PVC IE=	25.58



PHASE 2A – CONSTRUCT SHORELINE PARK RESTROOM (GO-BOND)

PDC
ENGINEERS
PLAN - DESIGN - CONSTRUCT
PUBLIC COMPANY
1000 International Mall Rd., Ste. A, Anchorage, AK 99503
Tel: (907) 561-9200 Fax: (907) 561-9201

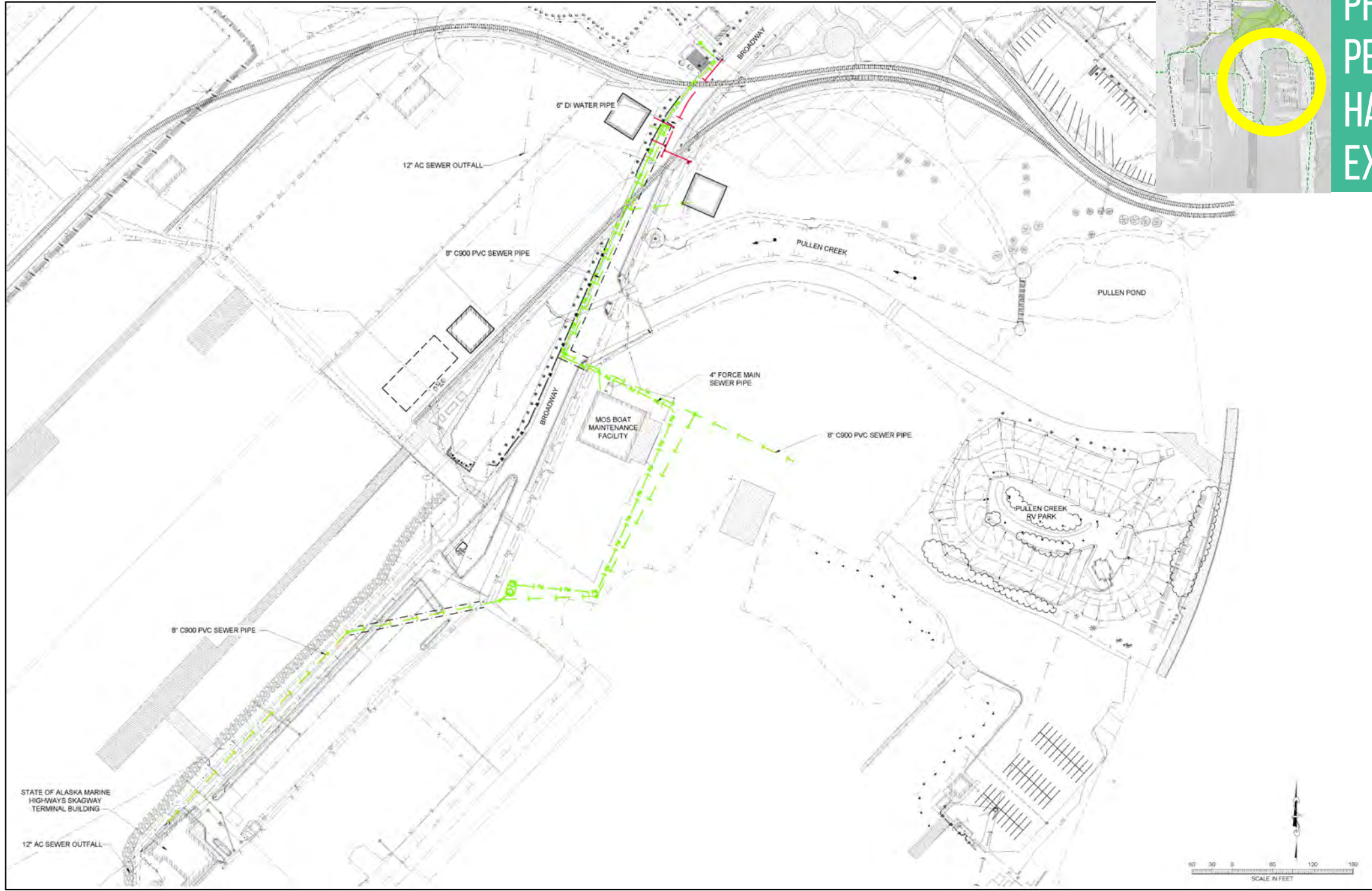
PROJECT:
SHORELINE PARK RESTROOM
SKAGWAY, ALASKA

DIAL BEFORE YOU DIG!
UG WATER, SEWER
983-2449
UG POWER, TELEPHONE & T.V.
983-2202
UTILITIES SHOWN ON THIS DRAWING
INDICATE EXISTENCE ONLY AND DO NOT
SUBSTITUTE FOR FIELD LOCATES



**RESTROOM
FACILITY**

PHASE 2B- FERRY PENINSULA & HARBOR UTILITIES EXTENSION



HIGHLIGHTS:

- Sewer utility extension shown in green.
- Water utility extension shown in red.



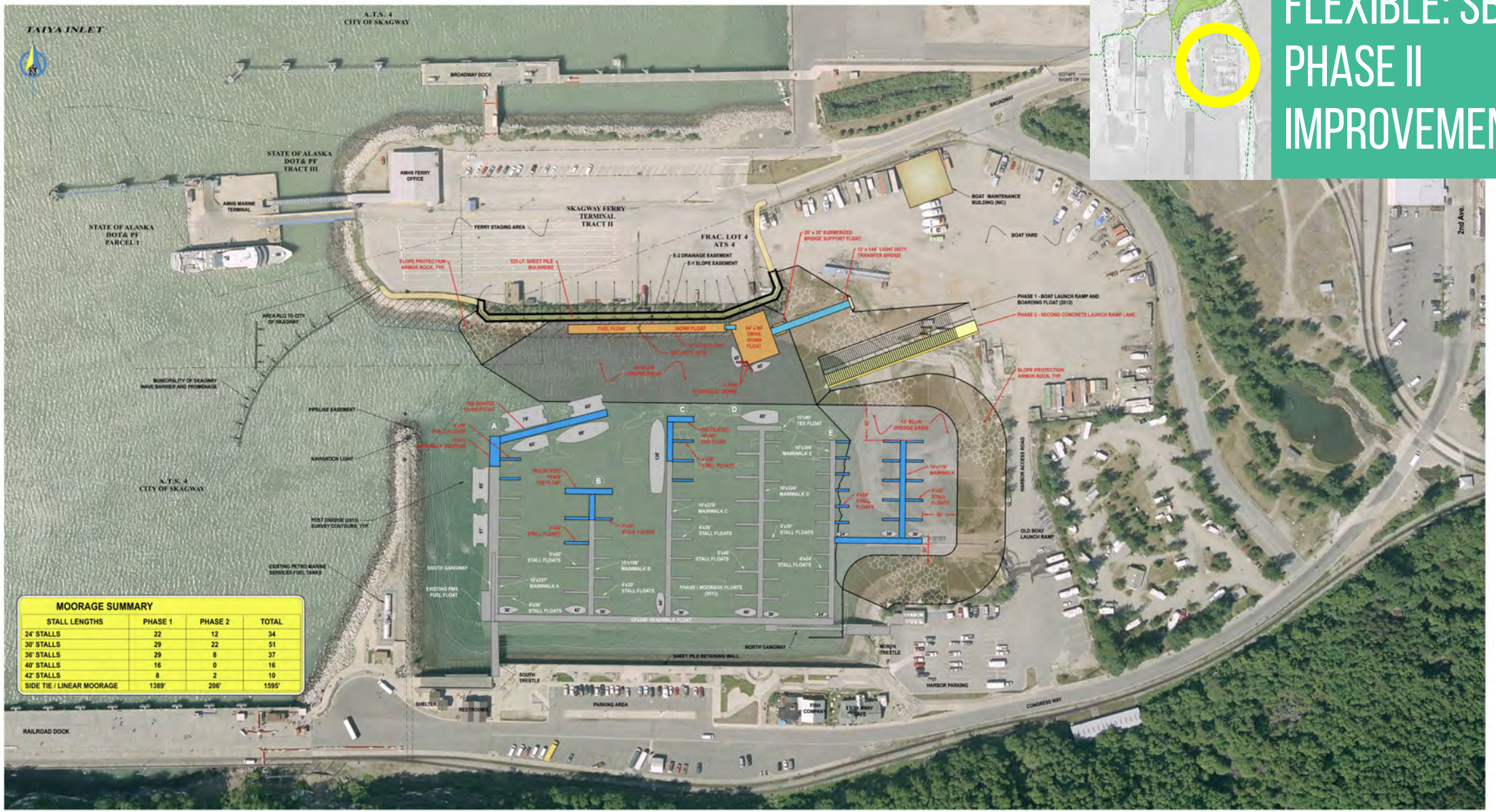
**PHASE 3-4:
AML MOVE &
BROADWAY TOUR
STAGING AREA**

AML MOVE TO NEW SITE



DEVELOP BRD TOUR STAGING AREA

FLEXIBLE: SBH PHASE II IMPROVEMENTS



MOORAGE SUMMARY			
STALL LENGTHS	PHASE 1	PHASE 2	TOTAL
24' STALLS	22	12	34
30' STALLS	29	22	51
36' STALLS	29	8	37
40' STALLS	16	0	16
42' STALLS	8	2	10
SIDE TIE / LINEAR MOORAGE	1389'	206'	1595'

PRELIMINARY

1000 Glacier Highway Ste. 100
Fairbanks, Alaska 99701
Phone: 907-566-2903
Fax: 907-566-2070
www.pnd-inc.com

STATE OF ALASKA
Department of Transportation
Division of Aeronautics

SKAGWAY, ALASKA
SKAGWAY HARBOR IMPROVEMENTS
PHASE II

SHEET TITLE: **CONCEPT NO. 1
DEVELOPMENT PLAN**

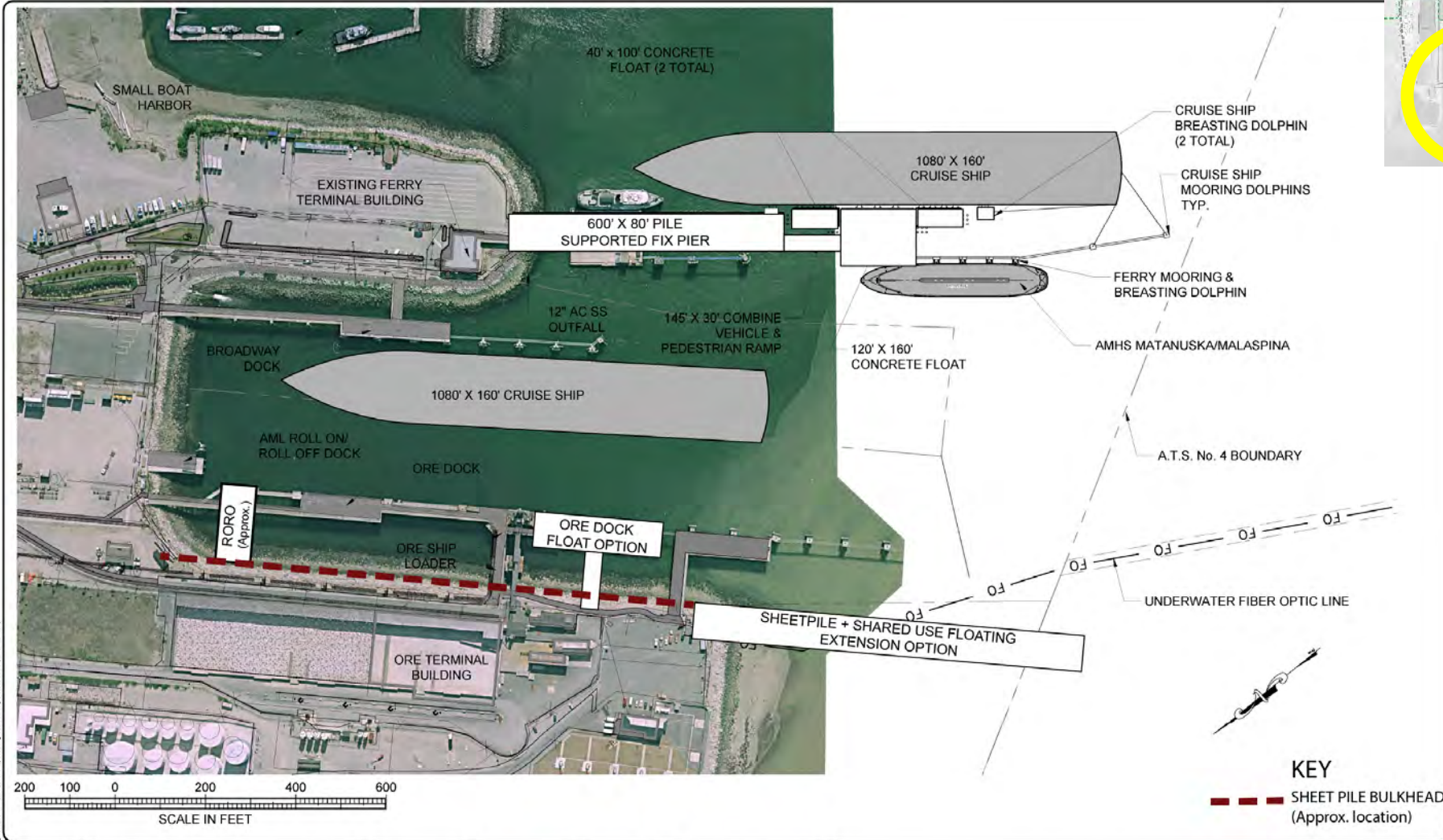
DATE: 7/2/13

DESIGN:	NAME:	CHECKED:	CNS:
DRAWN:	LRG:	APPROVED:	CNS:

SCALE: SCALE IN FEET

SCALE: 1" = 100 FT.

POTENTIAL DOCK EXTENSION OPTIONS



HIGHLIGHTS:

- AMHS/Cruise shared use dock extension [conversations ongoing]
- Small Ore Dock float option [conceptualized by WPYR]
- Sheet pile and large shared use floating dock extension off Ore Peninsula
- RORO facility

C:\Users\jamp\Documents\Projects\AMHS\AMHS_Concept_Dock_Extension.dwg, 10/27/2011 10:28:00 AM, 2/20/2011 10:28:00 AM

DESIGN	JAMP			
DRAWN	JMK			
CHECK	JAMP			
APPROVED	JAMP			
FILE				



PDC ENGINEERS
 PLAN • DESIGN • CONSTRUCT
 A RESOLVE COMPANY
 909 Mendonhall Mall Ste. 4, Juneau, AK 99801
 907.780.6080 | A8CC6DS

**CONCEPT FOR
 AMHS/CRUISE SHIP DOCK EXTENSION**
 MUNICIPALITY OF SKAGWAY, ALASKA

DATE	Jan 07, 2011
DESC No.	20076AN
SHEET	2 of 2

FLEXIBLE: SHORELINE PARK ADDITIONAL UPGRADES



QUESTIONS & DISCUSSION

1. MICROSOFT TEAMS VIDEO PARTICIPANTS:

- Raise your hand using the TEAMS feature.
- Or type a question into Chat Box.



2. PHONE AUDIO-ONLY PARTICIPANTS:

- When prompted: please unmute & indicate that you have a question.



- 3. ALL: Please help us prioritize those who have not yet had a chance to comment. Consider adding additional comments to the chat box.



****PLEASE LIMIT YOUR QUESTION/COMMENT TO 3 MINUTES****

Additional comments can be submitted to: PortofSkagway@skagway.org until 5/28/2021.

Stay tuned for a post-event survey.

THANK YOU!

Brad Ryan

Borough Manager

Municipality of Skagway

Manager@skagway.org

Mark Pusich

Principal Civil Engineer

PDC Engineers

MarkPusich@pdceng.com

Alex London

Planner

PDC Engineers

AlexLondon@pdceng.com

Patrick Cotter

Project Manager

PDC Engineers

PatrickCotter@pdceng.com

Natalie Lyon

Planner

PDC Engineers

NatalieLyon@pdceng.com

