

SKAGWAY PORT MASTER PLAN

Updated Design Concepts for Skagway's Waterfront

FEBRUARY MASTER PLAN PRESENTATION



HOUSE RULES

- Masks and social distancing required in the Rec Center



- Please keep microphones muted during the presentation



- Please hold questions until the comment period at the end



- Thank you for your participation!



INTRODUCTION

Port Master Planning Goals

Project Timeline

Elements of the Plan

Project Area | Existing Land Use

PORT MASTER PLANNING GOALS

01

ADDRESS THE IMPACTS OF
COVID-19 THROUGH URBAN
PLANNING & ENGINEERING
DESIGN



02

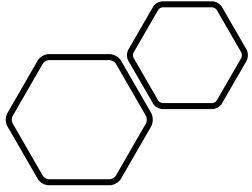
DEVELOP CONCEPTS FOR FUTURE
WATERFRONT



03

ENGAGE THE PUBLIC +
STAKEHOLDERS IN THE
PLANNING PROCESS





TIMELINE

WE ARE HERE

Initial outreach

Refine concepts

Integrate Feedback & Update concepts

Final Public Event
Shoreline Park Phase 1 construction begins

Phase 1 construction complete

Oct.-Nov. 2020

Nov.-Dec. 2020

Dec. 2020-Jan. 2021

Feb. 2021

Feb.-Mar. 2021

Mar. 2021

Apr. 2021

May 2021

June 30th, 2021

Sept.-Oct. 2021

Design charrette & Interviews

Master Plan Presentation

Compile Master Plan document
Phase 1 Shoreline Park bids

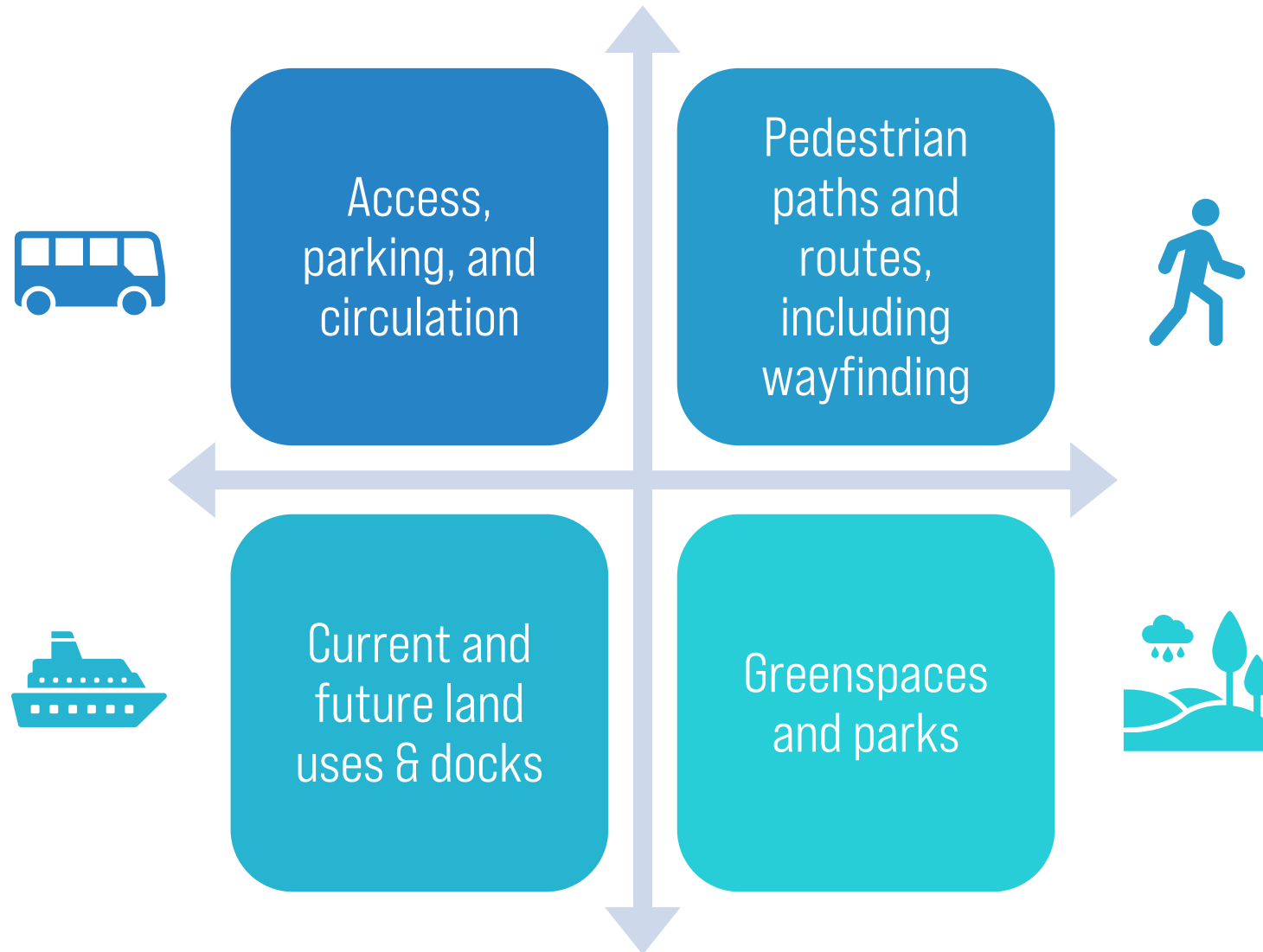
Integrate Feedback
Finalize Concepts, Plan & Specs

Phase 2A construction begins

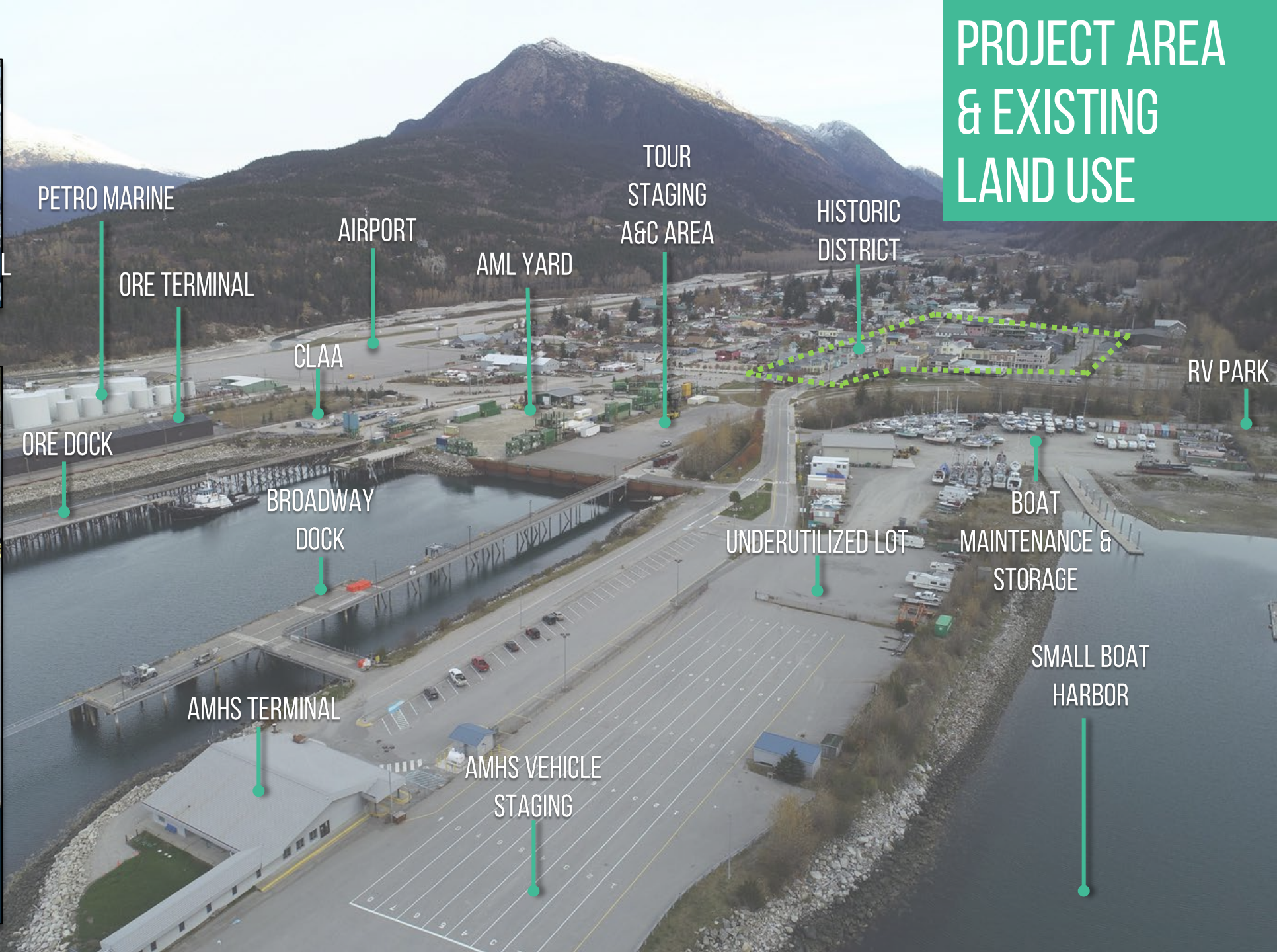
Phase 2A construction complete
Phase 2B construction begins

- **41 households** attended the in-person charrette
- **75 participants** viewed & commented on the online charrette
- **30 interviews** were conducted with waterfront stakeholders

WHAT ELEMENTS ARE BEING EVALUATED?



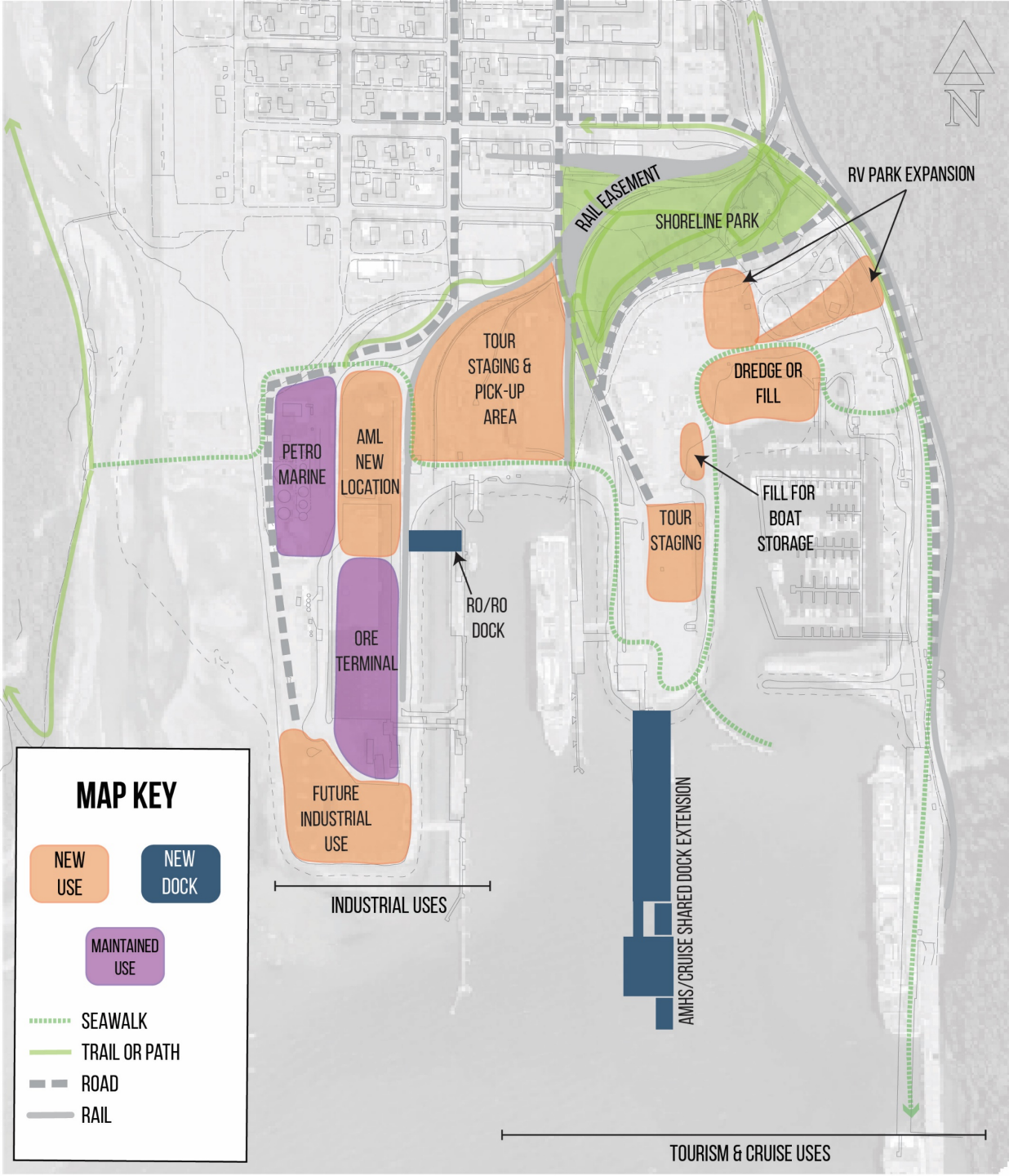
PROJECT AREA & EXISTING LAND USE



FUTURE LAND USE

HIGHLIGHTS:

- **SEPARATION OF USES**
 - Tourism & cruise uses east of Ore Dock
 - Industrial uses from Ore Dock west
- **MAINTAINED USES**
 - Petro Marine
 - AML at new site
- **NEW USES**
 - Expanded tour parking, access & circulation areas
- **NEW DOCKS**
 - RO/RO facility
 - Ferry Peninsula AMHS/cruise shared use dock extension



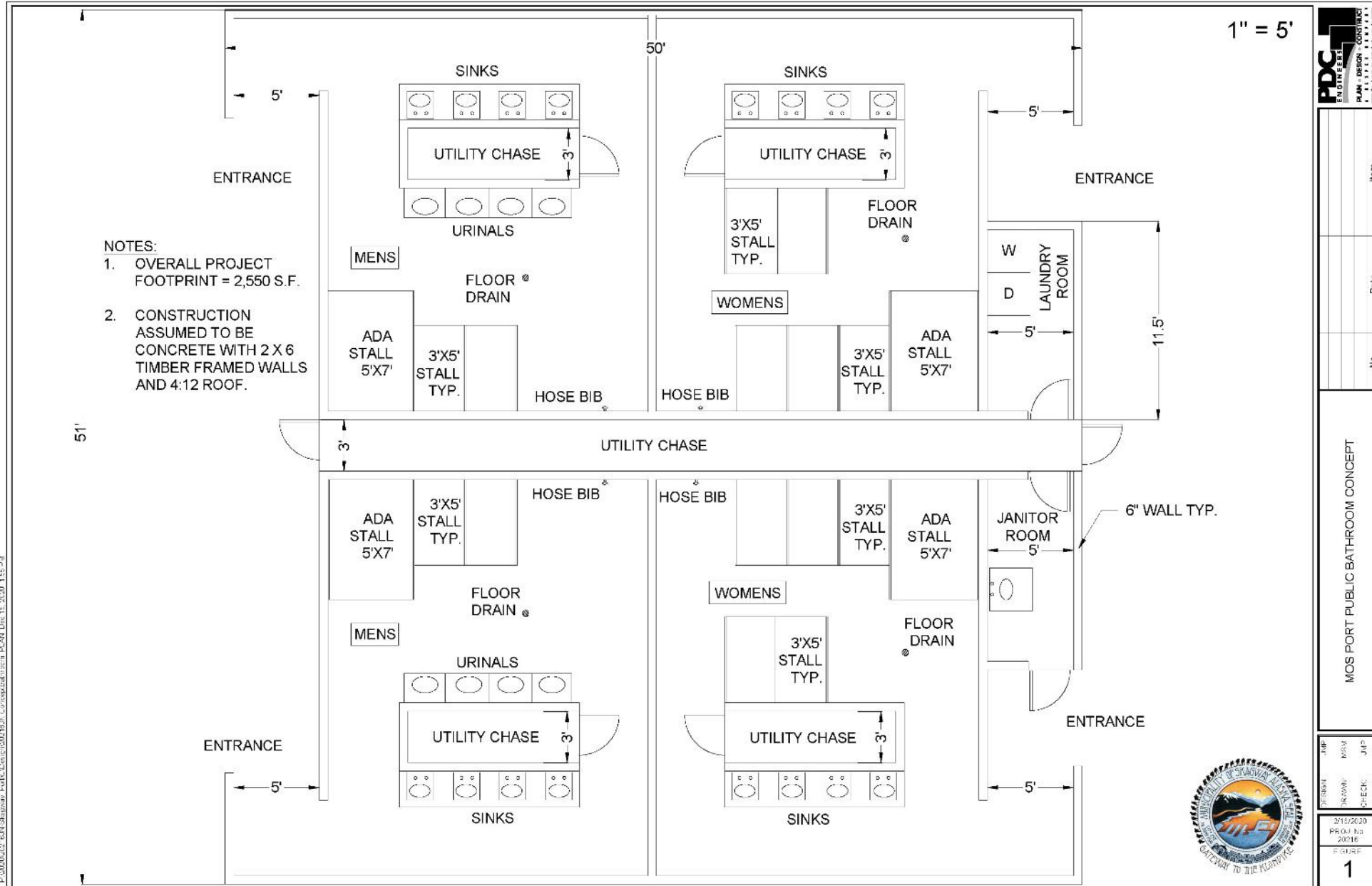
RESTROOM & SHELTER LOCATIONS



HIGHLIGHTS:

- Restrooms accessible from each dock
- New restroom in Shoreline Park (westside)
- New passenger waiting shelters at each dock

RESTROOM FACILITY CONCEPT



P:\2000\20 - 6N-Shawnee-Facilities\Design\2018\03-Concept\Bathroom Plan.Dwg, 15:20:20, 1:55:34



HIGHLIGHTS:

- Flexible Floor Plan
- Allows for social distancing movements
- Layout allows for easy maintenance



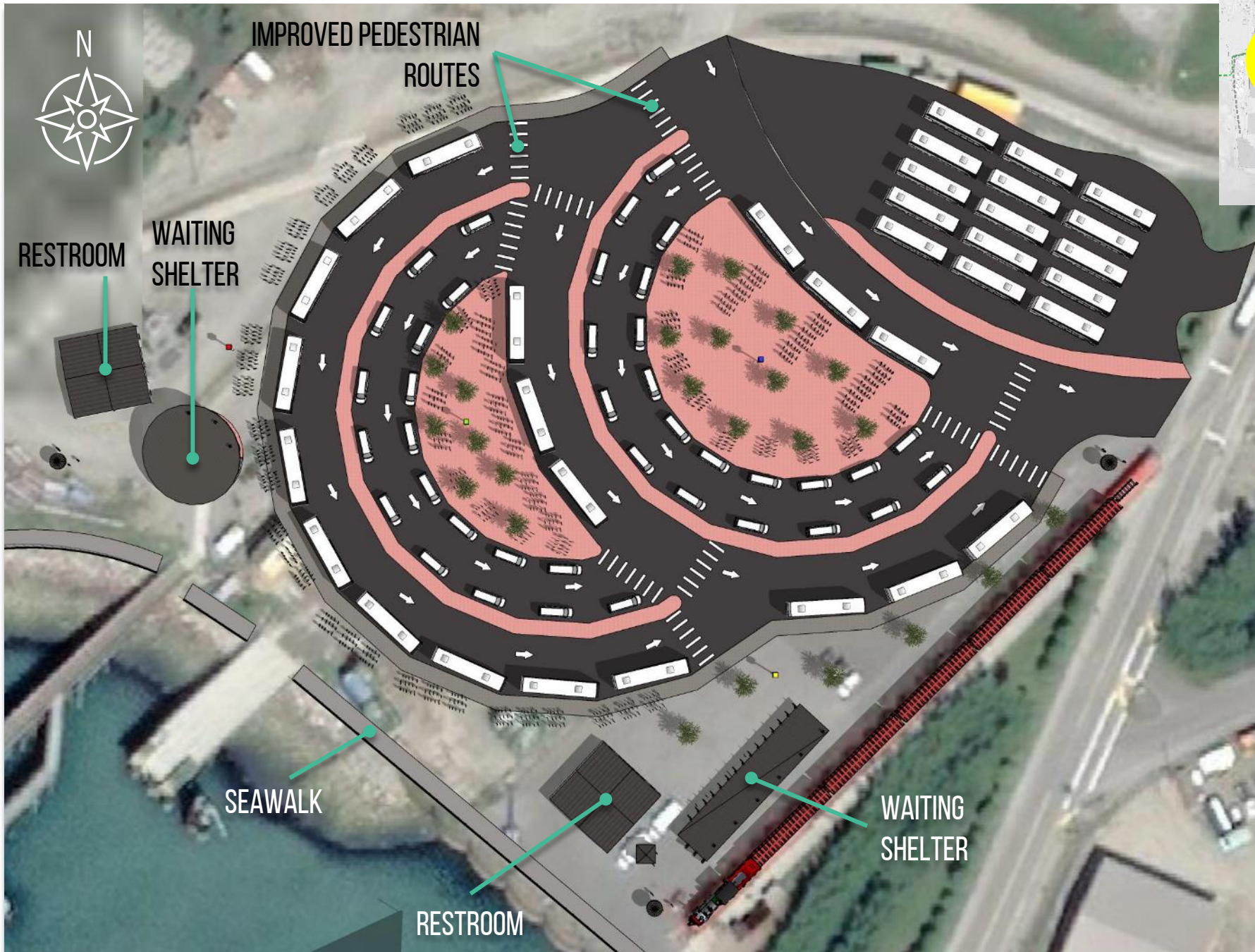
EXISTING TOUR
STAGING AREA



BROADWAY DOCK UPLAND EXISTING CONDITIONS

FEEDBACK:

- TOUR OPERATIONS
 - Chaotic, cramped, & confusing
 - Passengers exposed to wind & weather
 - Pedestrian & vehicle conflicts
 - Need for improved SMART stop
 - Need to consider bus/train transfers



BROADWAY DOCK ACCESS & AND CIRCULATION OVERVIEW

HIGHLIGHTS:

- No backing out vehicle movements
- Enter from State, exit onto Broadway
- Vehicle & pedestrian capacity for 2 large ships
- Designated motorcoach & small tour vehicle staging areas
- Improved turning movements
- Additional tour staging area to north
- Improved pedestrian routes
- Pax waiting shelters
- Restrooms
- Visitor info station

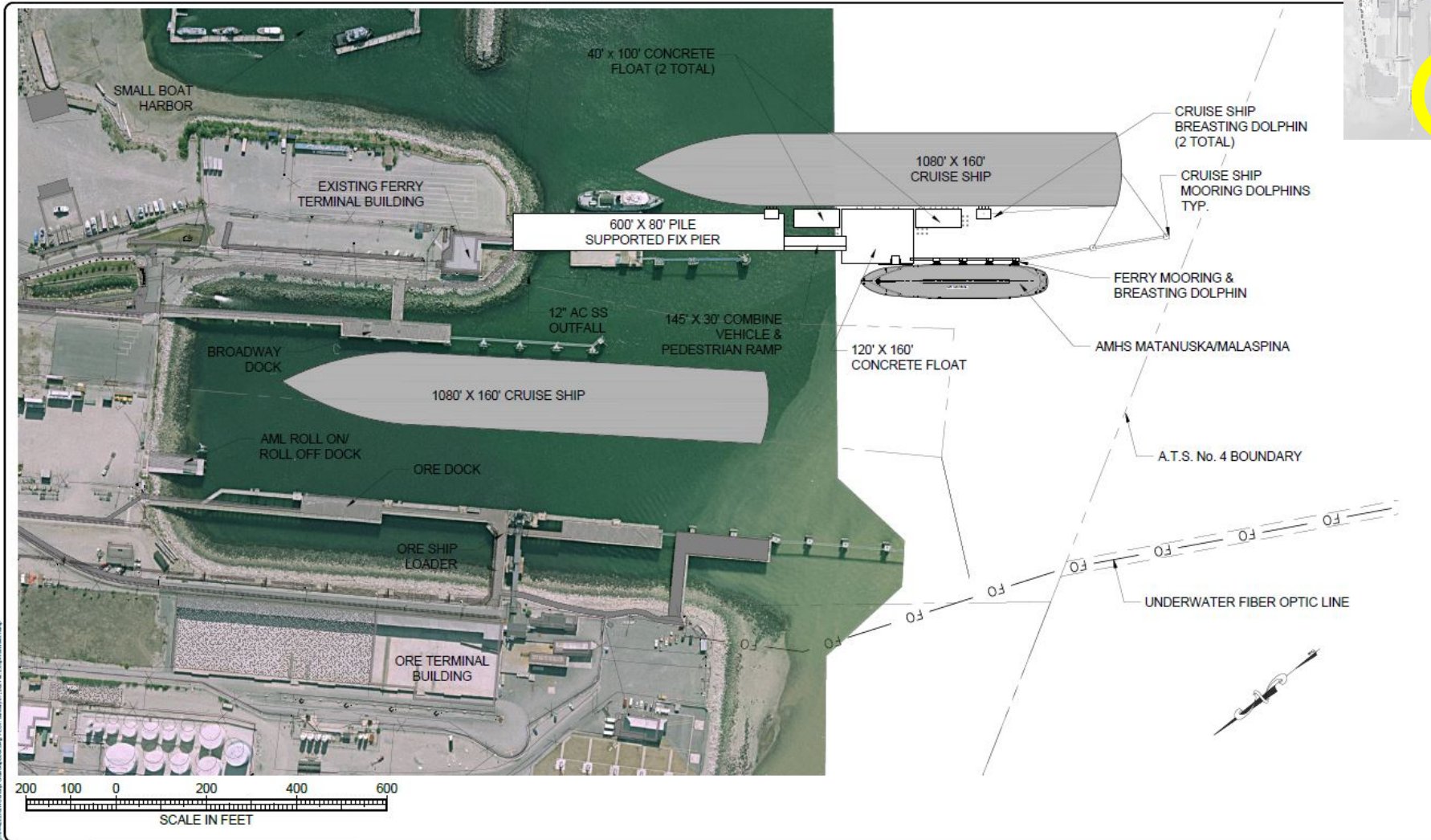


BROADWAY DOCK ACCESS & AND CIRCULATION DETAIL



CENTRAL PASSENGER LOADING & PLAZA AREA

FERRY PENINSULA SHARED USE DOCK EXTENSION



HIGHLIGHTS:

- AMHS/Cruise shared use

DESIGN: JMP			
DRAWN: JMK			
CHECK: JMP			
APPROVED: JMP			
PLS:	DATE	REVISION	BY

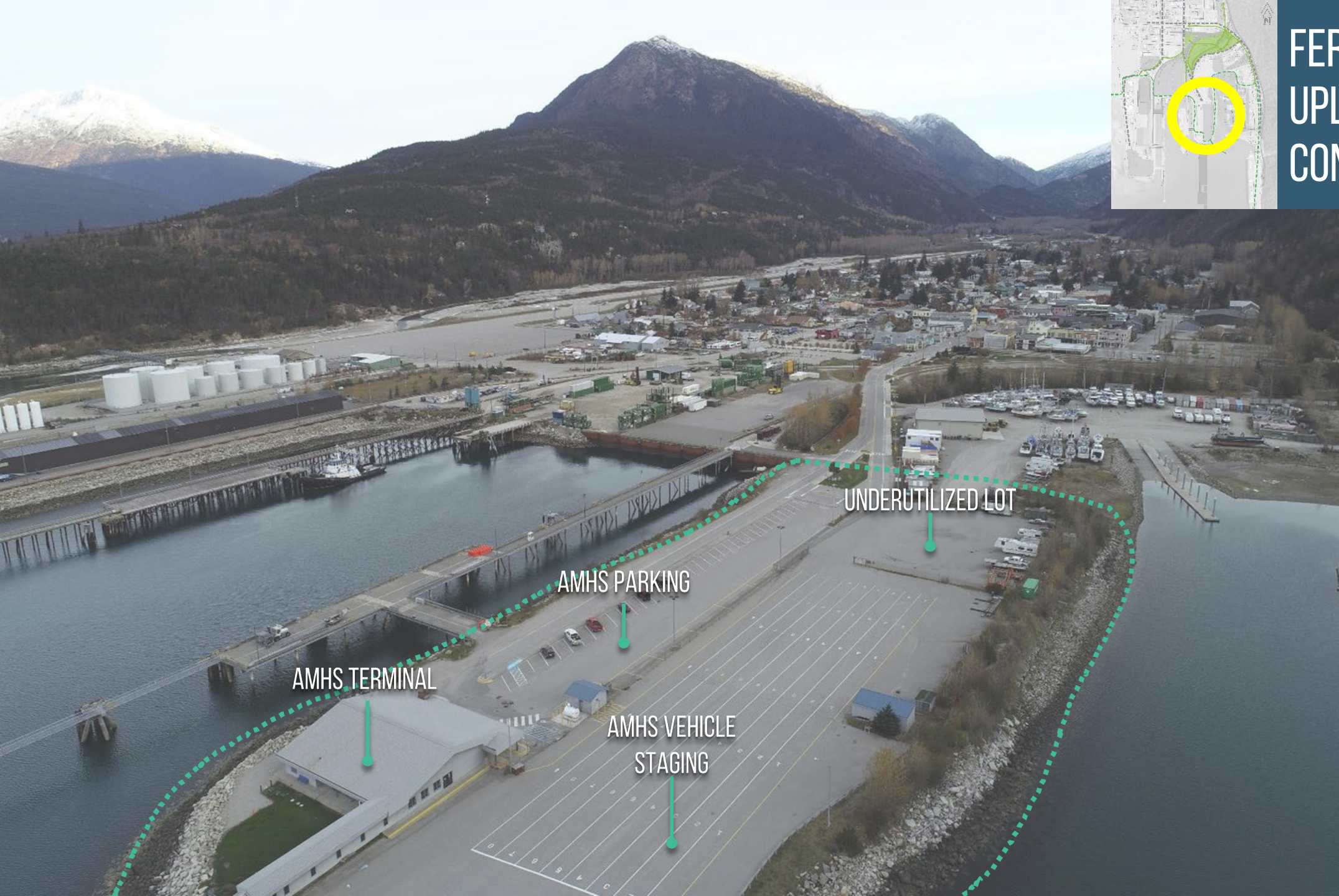


CONCEPT FOR
AMHS/CRUISE SHIP DOCK EXTENSION

MUNICIPALITY OF SKAGWAY, ALASKA

DATE: JUN 01 2021
POC NO: 2021JUN
SHEET: 2 of 2

FERRY PENINSULA UPLAND EXISTING CONDITIONS



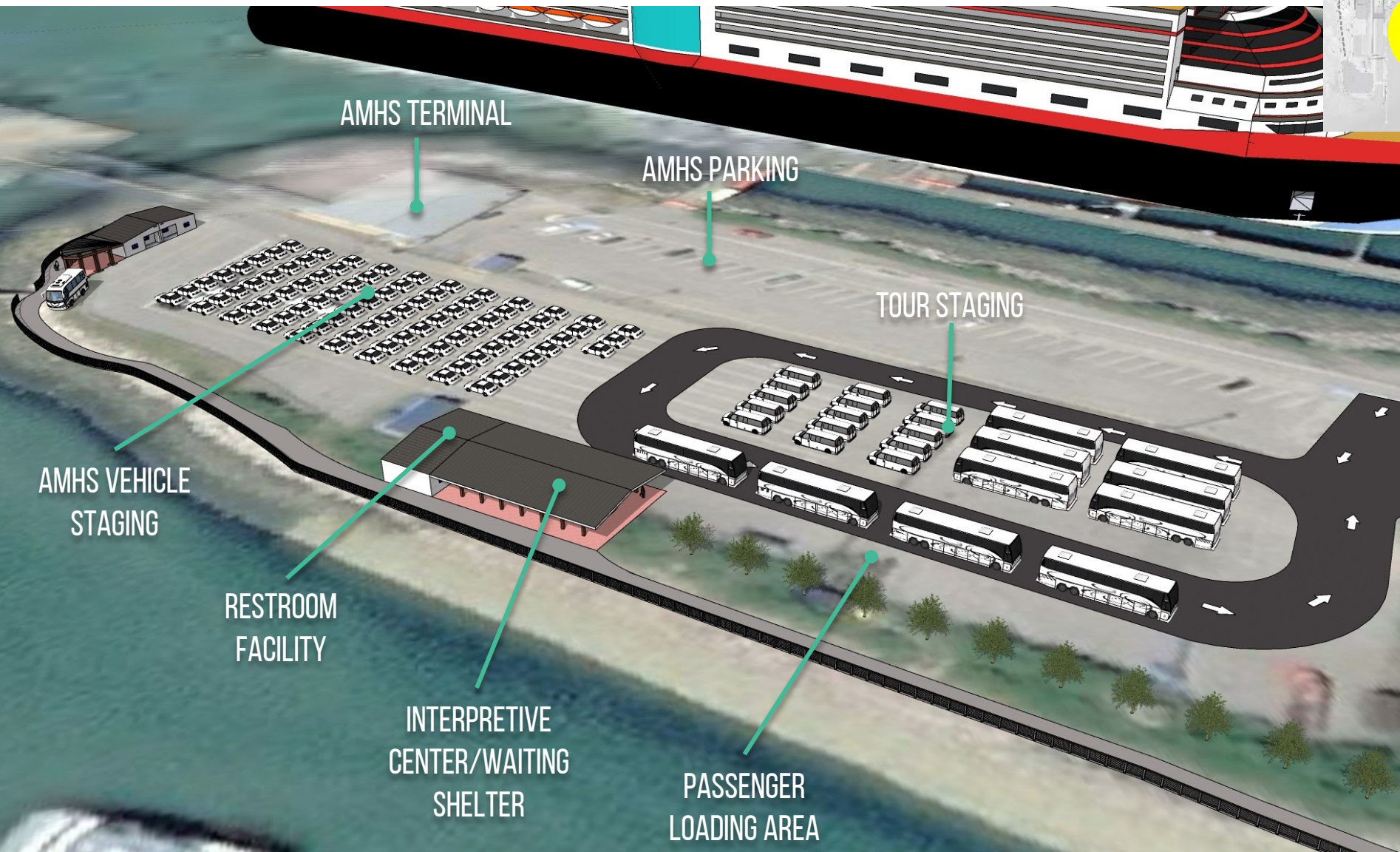
AMHS TERMINAL

AMHS PARKING

AMHS VEHICLE
STAGING

UNDERUTILIZED LOT

FERRY PENINSULA REVISED CONCEPT OVERVIEW



HIGHLIGHTS:

- AMHS/Cruise shared use
- Minimal AMHS & tour loading conflicts
- Passenger shelters & restroom facilities
- Seawalk for pedestrian traffic

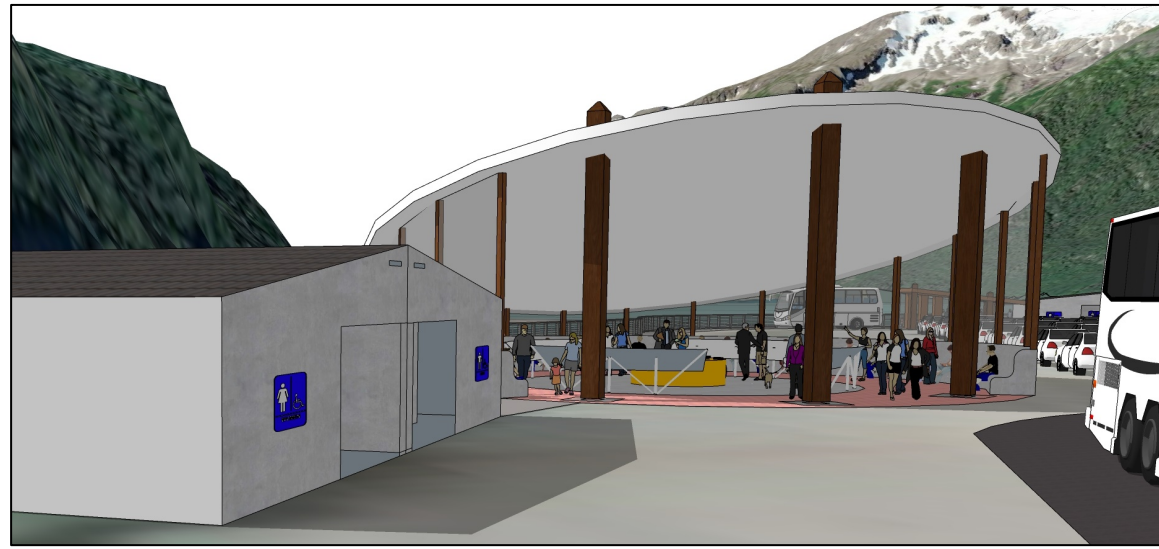
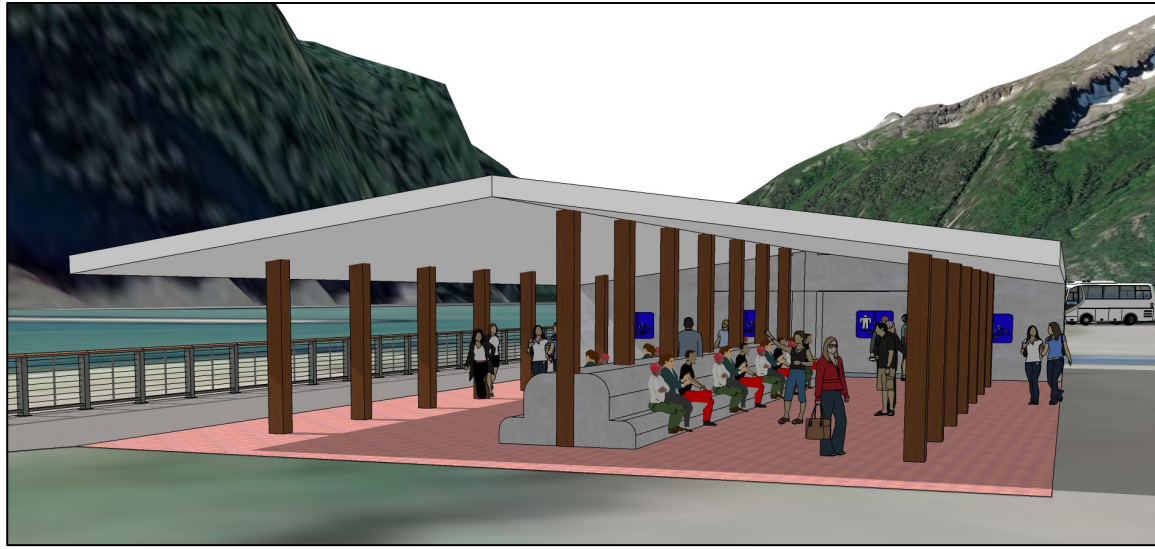
RECTANGULAR SHELTER



CIRCULAR SHELTER



FERRY PENINSULA
REVISED CONCEPT
DETAIL - OPTIONS



SEAWALK DESIGN OVERVIEW

HIGHLIGHTS:

- Extend Seawalk along waterfront
- Connect to existing Seawalk near Railroad Dock

SEAWALK DETAIL





● PEDESTRIAN KIOSK



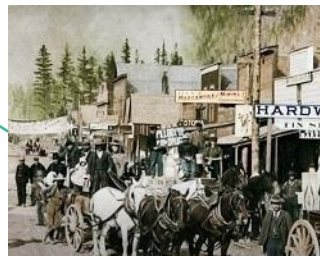
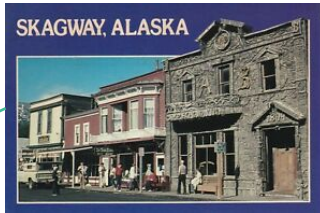
● PEDESTRIAN GUIDE



● DOCK GATEWAY ELEMENT



PEDESTRIAN KIOSK



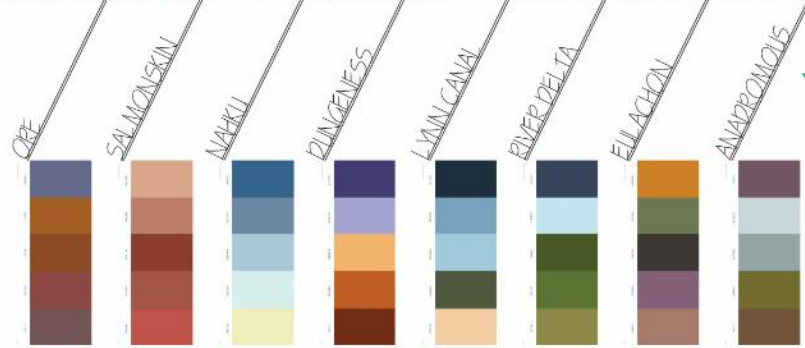
Sign board shape inspired by historic district roofline & AB Hall.

Tlingit/ Haida names on maps & opportunities to feature Native artisans or language & cultural information on panels.

Tapered wooden beams inspired by railroad ties & Gold Rush era tools.

Sign board inspired by the dimensional wooden signs of early Broadway Street.

Natural materials reflect the historical resources of Skagway.



SIGNAGE DESIGN & POTENTIAL COLOR THEMES

Potential Color Themes

DOCK GATEWAY ELEMENT

Seawalk Railing

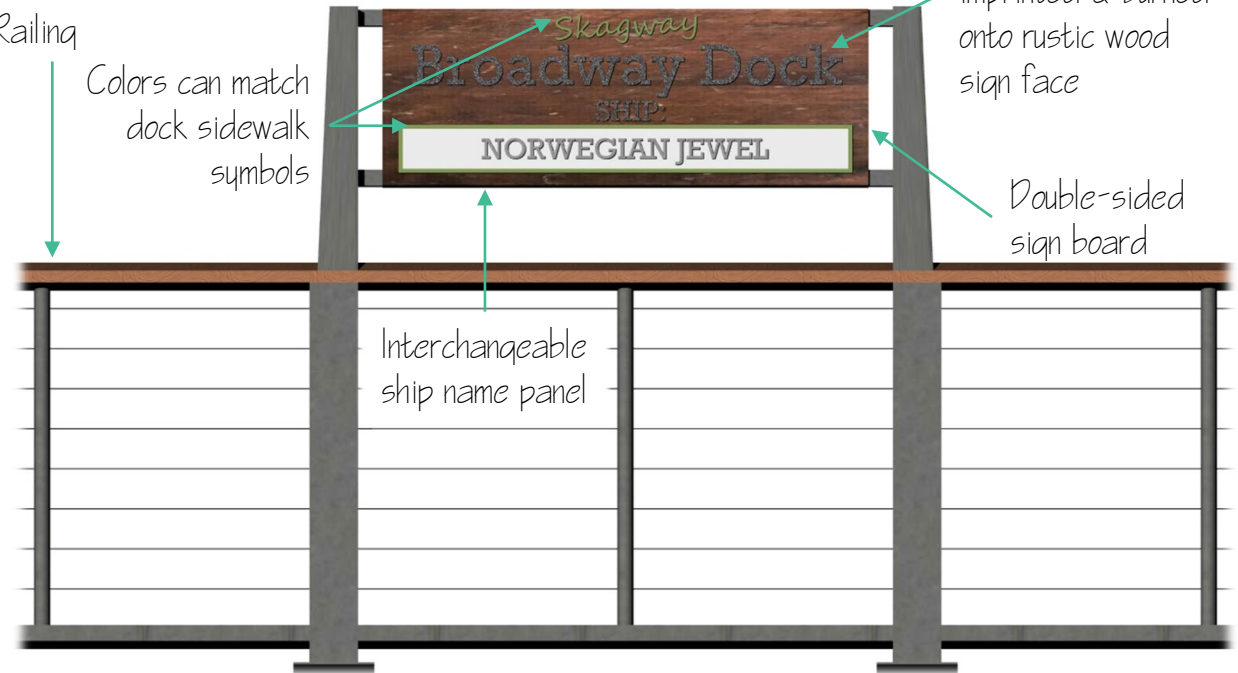
Colors can match dock sidewalk symbols

Dock name imprinted & burned onto rustic wood sign face

Double-sided sign board

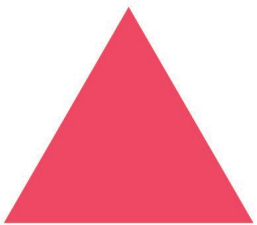
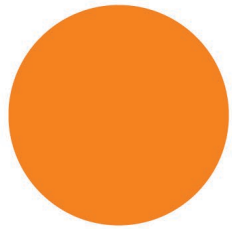
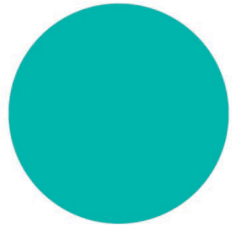


Interchangeable ship name panel

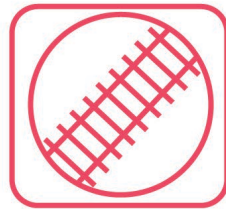


DOCK SIDEWALK SYMBOLS

Option 1: Shapes & Colors



Option 2: Icons & Colors



Ferry Dock



Broadway Dock



Ore Dock

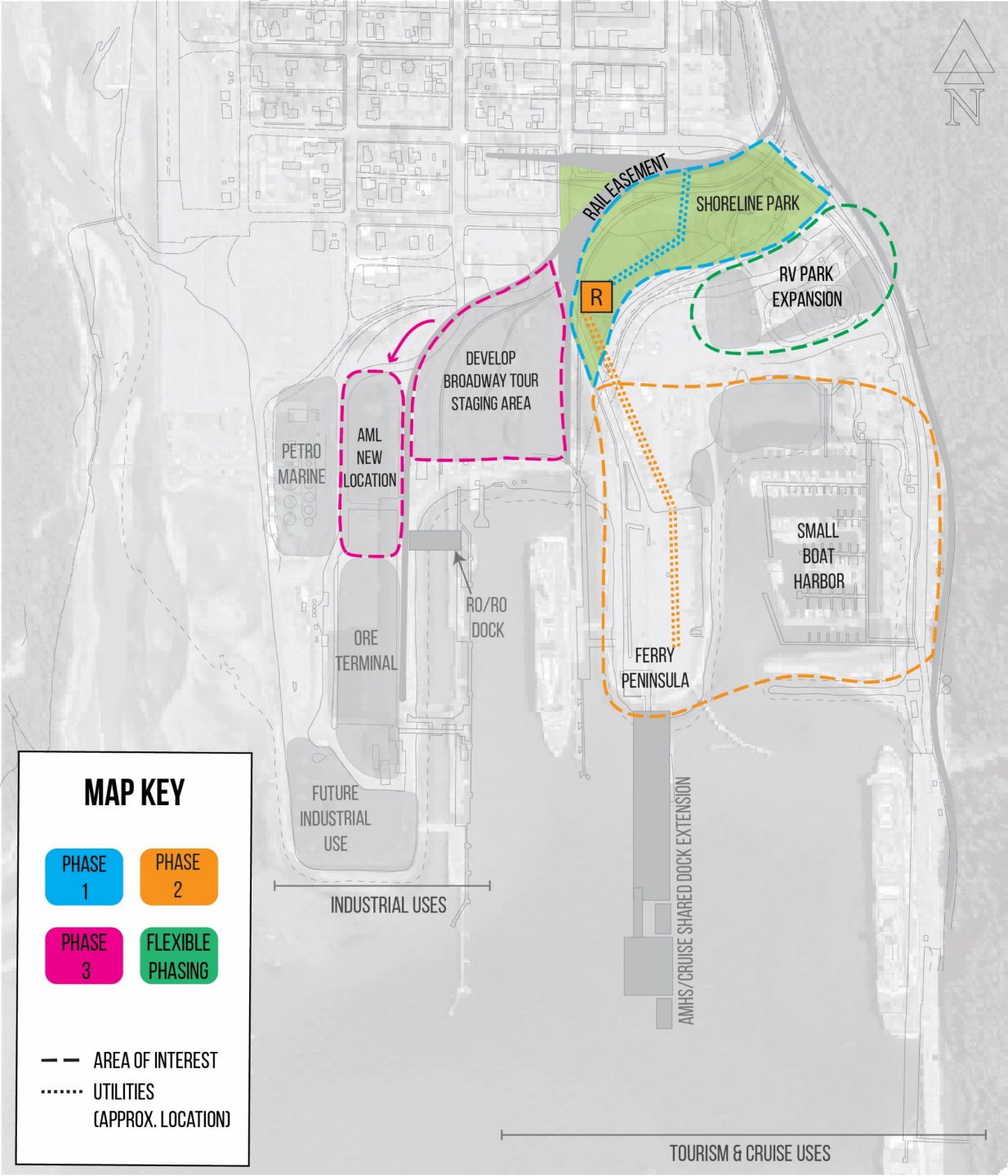


Railroad Dock

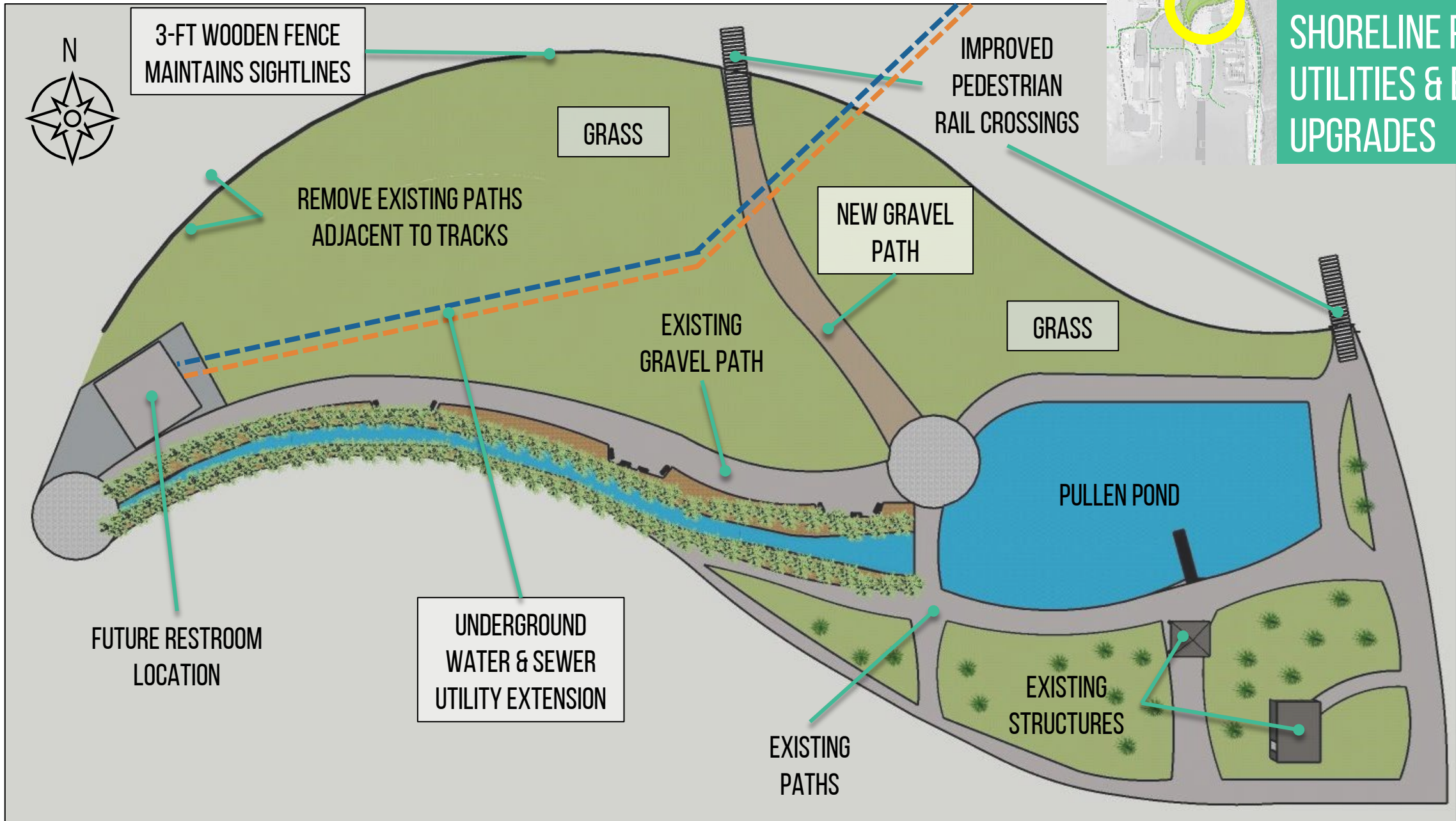
PROJECT PHASING

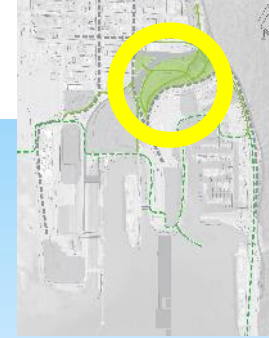
HIGHLIGHTS:

- PHASE 1 (COVID relief grant funded):
 - Shoreline Park utilities, grass, gravel path, rail safety improvements
- PHASE 2 (GO bond funded)
 - 2A: Shoreline Park restroom facility
 - 2B: Utilities extension to Ferry peninsula & Small Boat Harbor areas
- PHASE 3:
 - AML move to new location
 - Develop Broadway tour staging area
- FLEXIBLE PHASING:
 - Pullen RV Park expansion

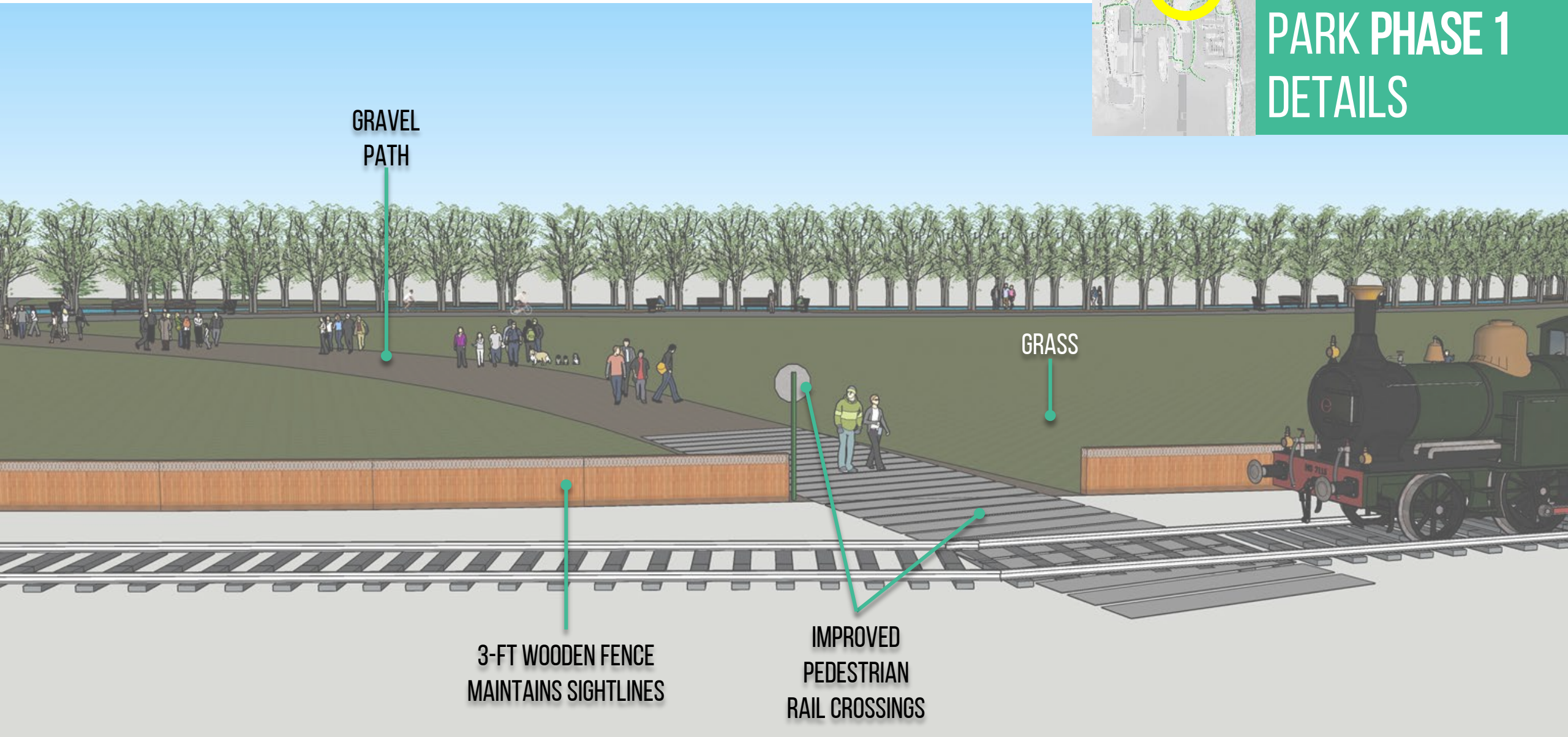


PHASE 1 – SHORELINE PARK UTILITIES & BASIC UPGRADES





SHORELINE PARK PHASE 1 DETAILS



GRAVEL
PATH

GRASS

3-FT WOODEN FENCE
MAINTAINS SIGHTLINES

IMPROVED
PEDESTRIAN
RAIL CROSSINGS



3-FT WOODEN FENCE
MAINTAINS SIGHTLINES

IMPROVED
PEDESTRIAN
RAIL CROSSING

GRASS

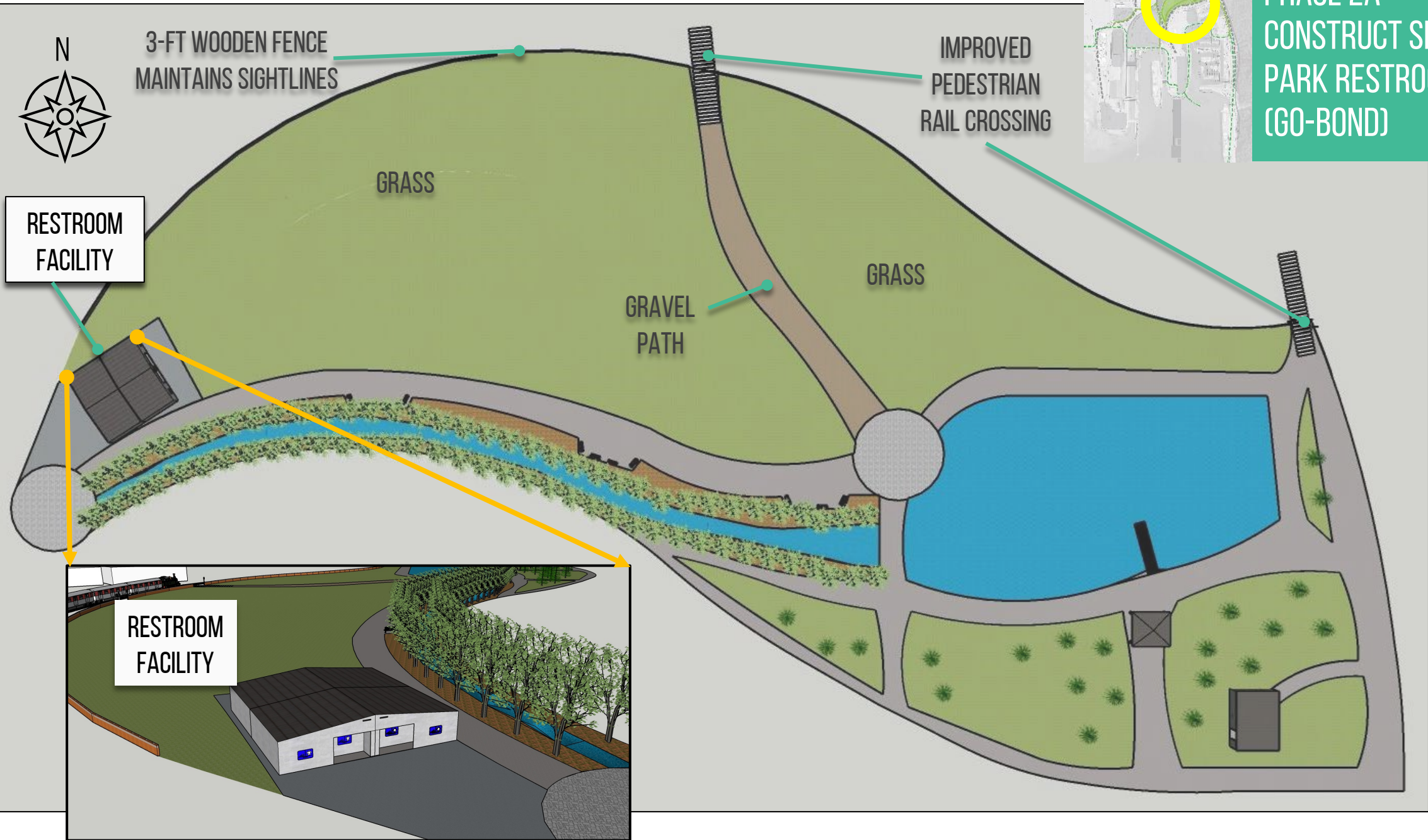
GRASS

GRAVEL
PATH

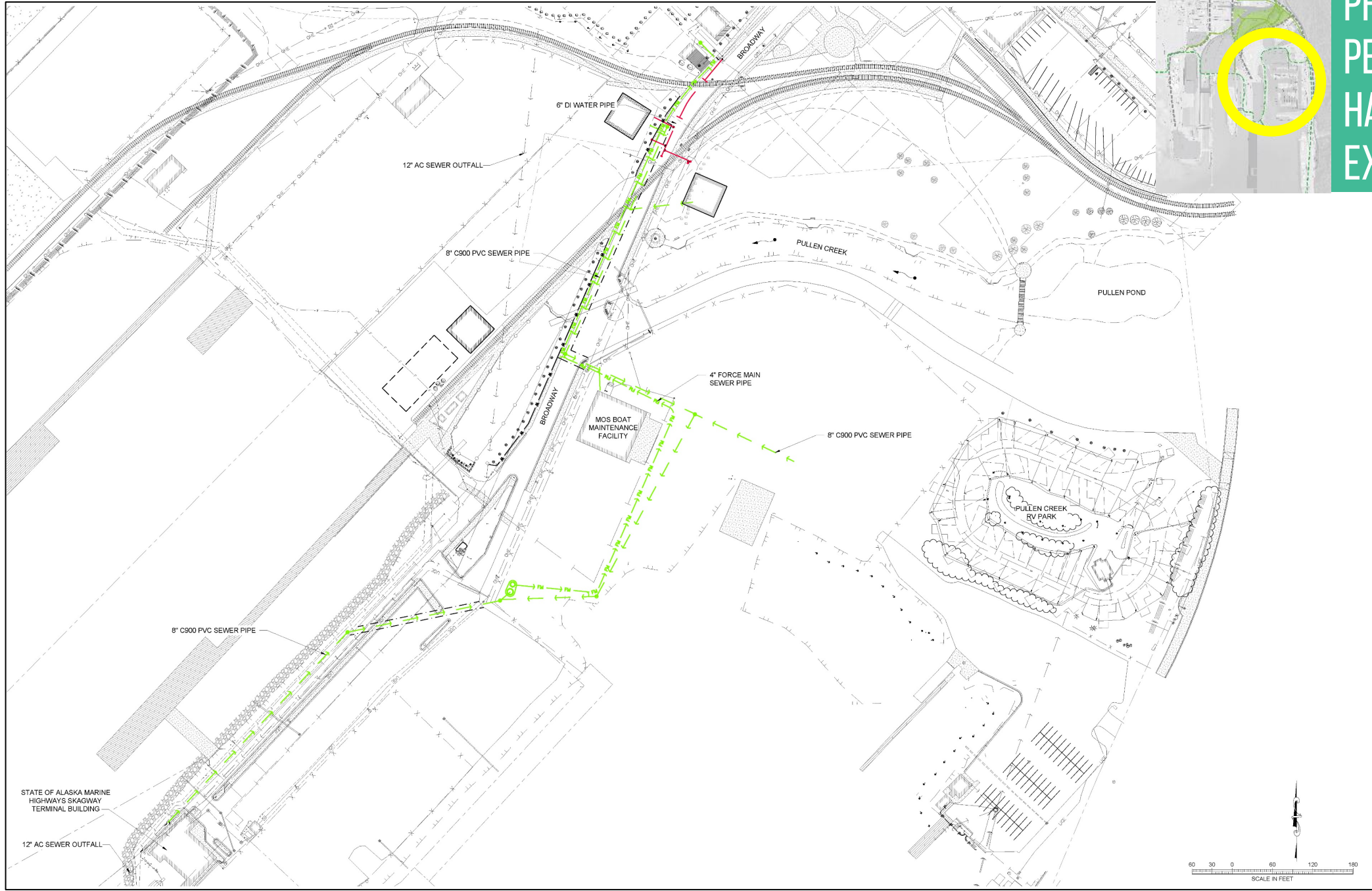
RESTROOM
FACILITY

RESTROOM
FACILITY

PHASE 2A –
CONSTRUCT SHORELINE
PARK RESTROOM
(GO-BOND)

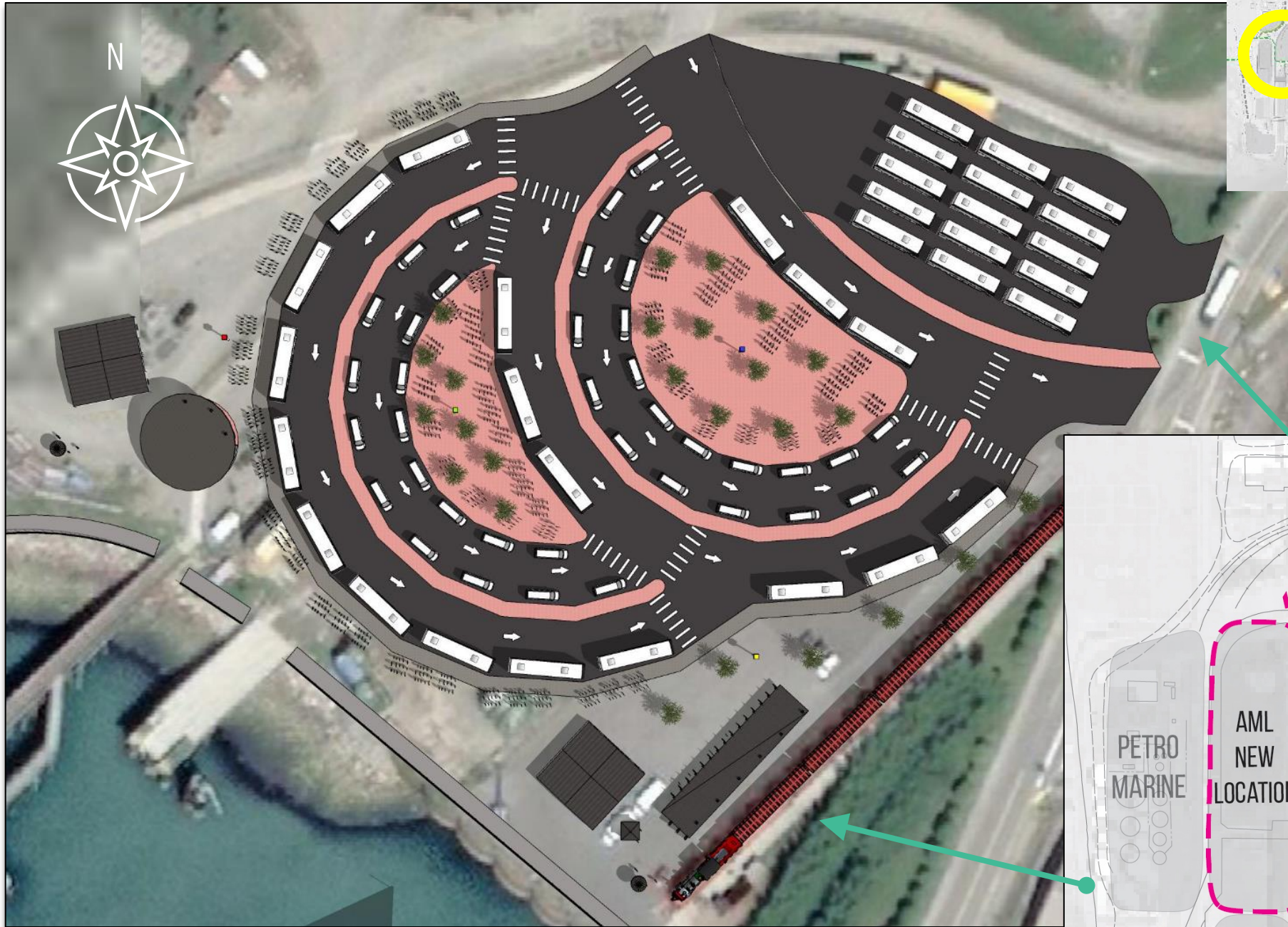


PHASE 2B- FERRY PENINSULA & HARBOR UTILITIES EXTENSION

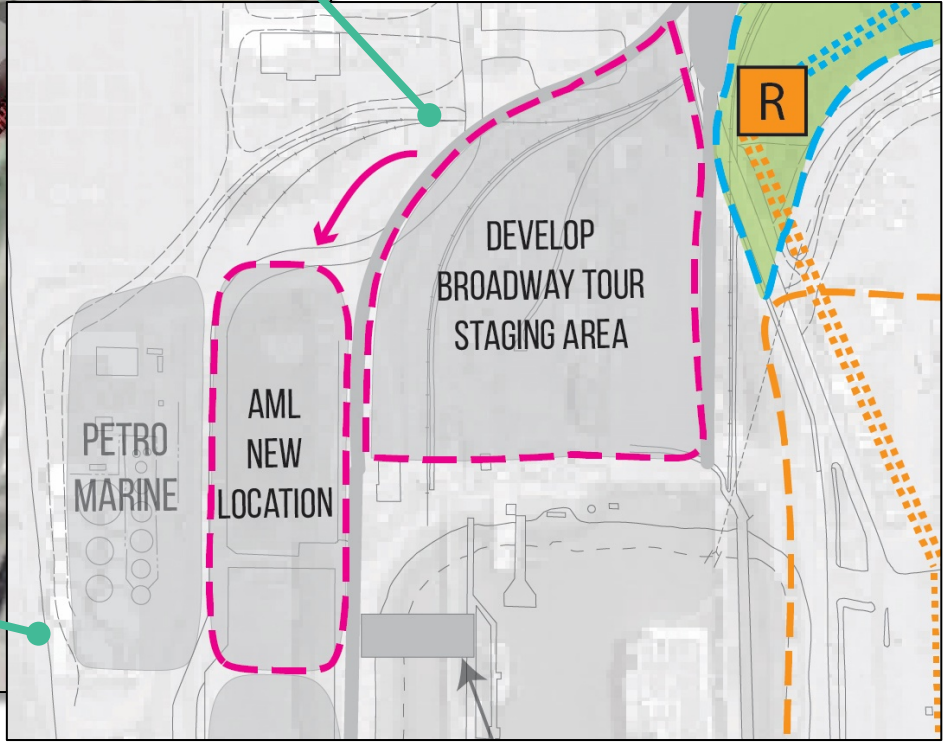


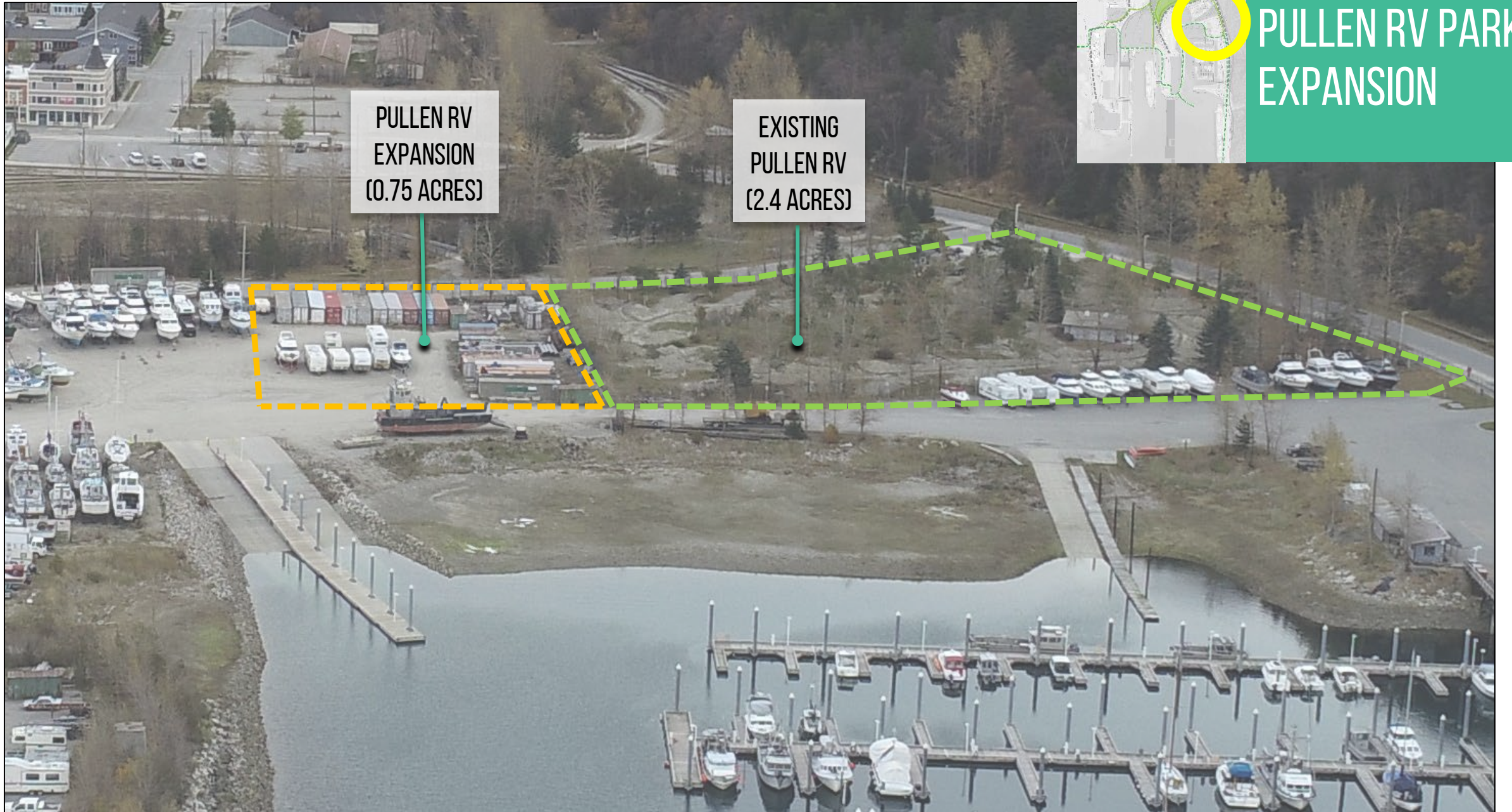
HIGHLIGHTS:

- Sewer utility extension shown in green.
- Water utility extension shown in red.



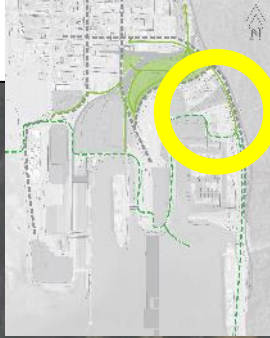
**PHASE 3-
AML MOVE &
DEVELOP BROADWAY
TOUR STAGING AREA**





PULLEN RV
EXPANSION
(0.75 ACRES)

EXISTING
PULLEN RV
(2.4 ACRES)



PULLEN RV PARK EXPANSION

QUESTIONS & DISCUSSION

1. IN-PERSON PARTICIPANTS

Please raise your hand if you have a question/comment to share.



2. MICROSOFT TEAMS VIDEO PARTICIPANTS:

Please type question into Chat Box to be read aloud and answered.



3. PHONE PARTICIPANTS:

When prompted...please unmute & indicate that you have a question.



****PLEASE BE CONSIDERATE OF EVERYONE'S TIME AND LIMIT YOUR QUESTION TO 3 MINUTES****

WRITTEN COMMENTS & QUESTIONS CAN BE SUBMITTED TO: PortofSkagway@skagway.org
UNTIL MARCH 10, 2021.

THANK YOU!

Brad Ryan

Borough Manager

Municipality of Skagway

Manager@skagway.org

Mark Pusich

Principal Civil Engineer

PDC Engineers

MarkPusich@pdceng.com

Alex London

Planner

PDC Engineers

AlexLondon@pdceng.com

Patrick Cotter

Project Manager

PDC Engineers

PatrickCotter@pdceng.com

Natalie Lyon

Planner

PDC Engineers

NatalieLyon@pdceng.com

